

**AGENDA
CITY OF GIG HARBOR
PUBLIC WORKS COMMITTEE
Tuesday, October 12, 2021
3:00 p.m. – 4:00 p.m.**

Due to public health concerns, this meeting will be accessible by phone by dialing (253) 215-8782 and entering the Meeting ID: 929 1013 8774 or through Zoom at: <https://zoom.us/j/92910138774>

Comments are only allowed during designated portions of the meeting. To speak during the meeting, press the Raise Hand button near the bottom of your Zoom window or press *9 on your phone. Please refrain from “raising your hand” until the Chair has announced that he has opened the public comment portion of the meeting.

Your name or the last four digits of your phone number will be called out when it is your turn to speak, where you will be asked your name and address for the record. When using your phone to call in, you may need to press *6 to unmute/mute yourself. All speakers will have up to three minutes to speak.

Instead of speaking live, you may submit comments in writing before the meeting. Your input / questions must be provided to Executive Assistant Maureen Whitaker by 1:00 p.m. on Tuesday, October 12, 2021. All written comments must be able to be read in 3 minutes or less to be included in the record and have the title: FOR PUBLIC COMMENT included. Send comments to: mwhitaker@gigharborwa.gov. Written comments will be read during Public Comment.

CALL TO ORDER / ROLL CALL

APPROVAL OF MINUTES: September 12, 2021

OLD BUSINESS: none.

NEW BUSINESS:

1. Hall St ROW Vacation Request – Ryan White
2. PROS Plan Update
3. Stormwater Rate Structure – Draft Ordinance

CIP REVIEW

PUBLIC COMMENT

ANNOUNCEMENT OF UPCOMING MEETING: November 9, 2021

ADJOURN

MINUTES
CITY OF GIG HARBOR
PUBLIC WORKS COMMITTEE
Tuesday, September 14, 2021
3:00 p.m. – 4:00 p.m.

Due to public health concerns, this meeting was held remotely.

CALL TO ORDER / ROLL CALL

Public Works Committee Bob Himes called the meeting to order at 3:02 p.m.

Public Works Committee Members Present (remotely): Jeni Woock, Bob Himes.

Public Works Committee Chair Jim Franich was detained in traffic and arrived just after the meeting was called to order.

Staff Present (remotely): City Administrator Tony Piasecki, Public Works Director Jeff Langhelm, Senior Engineer Aaron Hulst, and Executive Assistant Maureen Whitaker (scribe)

APPROVAL OF MINUTES: June 15, 2021

MOTION: Move to approve the June 15, 2021 Public Works Committee Minutes.

Woock / Himes – Motion passed unanimously.

OLD BUSINESS: none.

NEW BUSINESS:

1. Olympic Dr. Right-Turn Lane Extension at Pt. Fosdick Dr.

Senior Engineer Aaron Hulst and Public Works Director Jeff Langhelm provided a brief overview and background regarding the Olympic Drive Right-turn Lane Extension at Point Fosdick Drive. This project is listed #10 on the City's 2022-2027 Six-Year Transportation Improvement Program (TIP) and scheduled for design and construction in 2023 with a projected project cost of \$690,000 for PS&E and Construction. The project cost includes demoing 260 feet of sidewalk, curb line, and buffer. A lengthy discussion ensued about the pros and cons of restricting left-in and left-out of Harbor Plaza's westerly driveway and the potential problem of traffic stacking up in the left turn lane from Pt. Fosdick and Olympic Drive. The need for a traffic modeling study was discussed. Mr. Langhelm stated if the development triggers additional capacity, the City can decide apply restrictions when the TIP project is funded.

RECOMMENDATION:

The Public Works Committee recommended doing a traffic modeling study after the Metropolitan Market is open in the first or middle of 2022.

2. Cedar Crest Water System's August 2021 Incident

Mr. Langhelm provided an overview of his conversation with Washington Water's Operations Manager who reported that the disruptions that occurred in August over a 24-hour period were apparently caused by equipment failures and not due to inadequate capacity. Mr. Langhelm stated that the City does not manage or monitor other water purveyors and shared a map of the water purveyors in Gig Harbor city limits and adjoining areas.

A brief discussion ensued and Councilmember Woock stated that she had received a number of complaints by businesses and residents that were affected and expressed her concern that she doesn't want future developments to affect water availability.

CIP REVIEW

Mr. Langhelm went over the CIP Tiers 1-4. A brief discussion occurred concerning how the Six-Year TIP correlates to the CIP Tiers.

PUBLIC COMMENT: none

ANNOUNCEMENT OF UPCOMING MEETING: October 12, 2021


ADJOURN: 4:33 p.m.



PUBLIC WORKS DEPARTMENT

MEMORANDUM

TO: Public Works Committee

FROM: Jeff Langhelm, PE, Public Works Director 

DATE: October 8, 2021

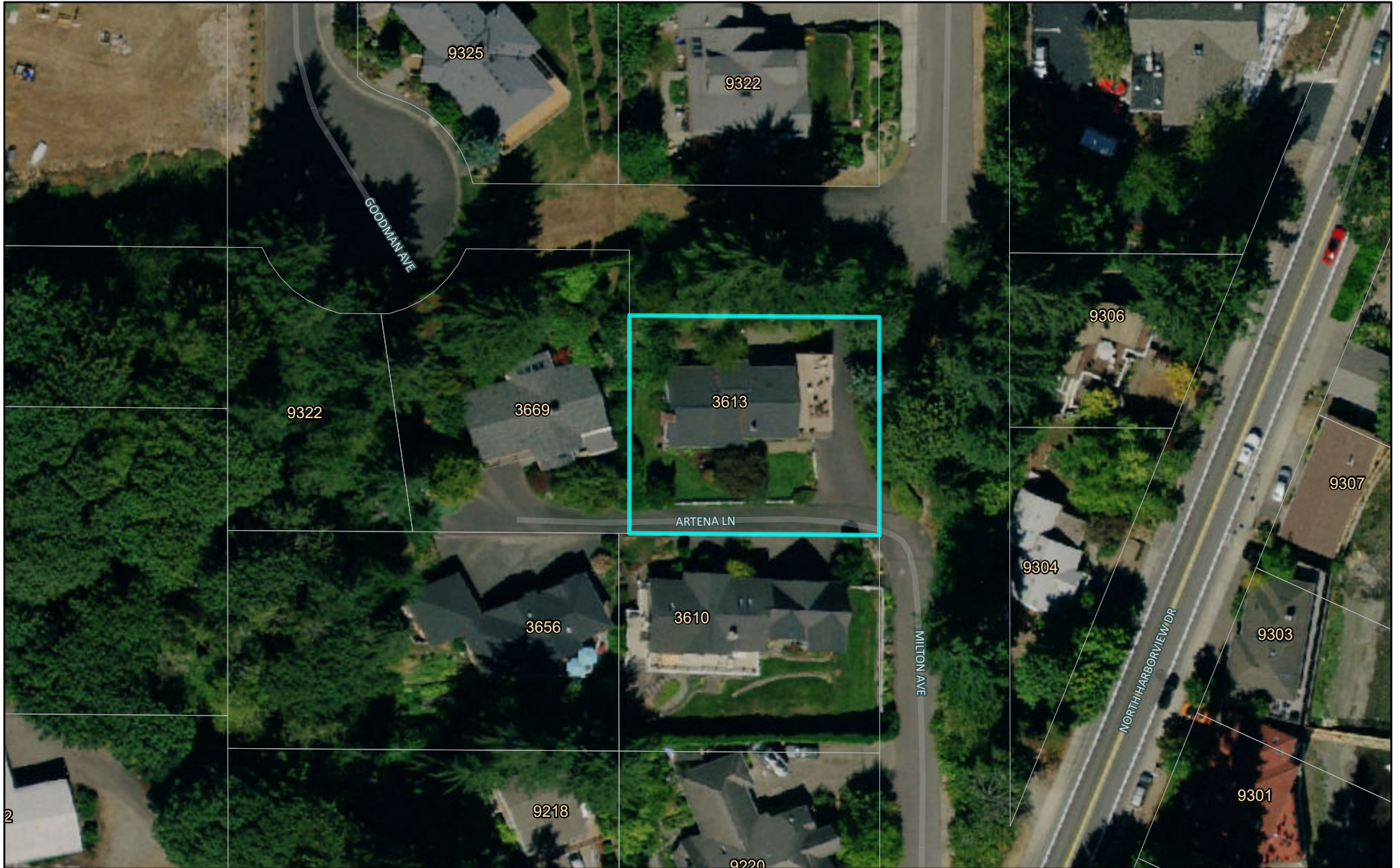
SUBJECT: Hall Street Right of Way Vacation Requested by Ryan White

In March 2021 the City received a request from Ryan and Karen White, owners of the property at 3613 Ardena Lane, to vacate a 30 ft portion of the City's Hall Street right of way that is abutting their property. See attached location map and proposed right of way vacation survey.

This portion of Hall Street is located in the non-user statute area as described in state law and GHMC 12.14.018(C). Staff performed a preliminary review of the City's infrastructure in this area and supports vacating most of the requested right of way. Specifically, Staff recommends vacating all but a small portion of the north easterly edge of the right of way for operation and maintenance of the existing hammer head turn around located at the south end of northerly segment of Milton Ave.

At the October 12 Public Works Committee meeting Staff will present this request and answer questions related to this topic.

Hall St ROW Vacation_White



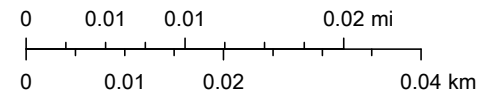
9/29/2021, 11:30:04 AM

OCIO 2020 Imagery MG3 Color

Red: Band_1

Green: Band_2

1:1,128

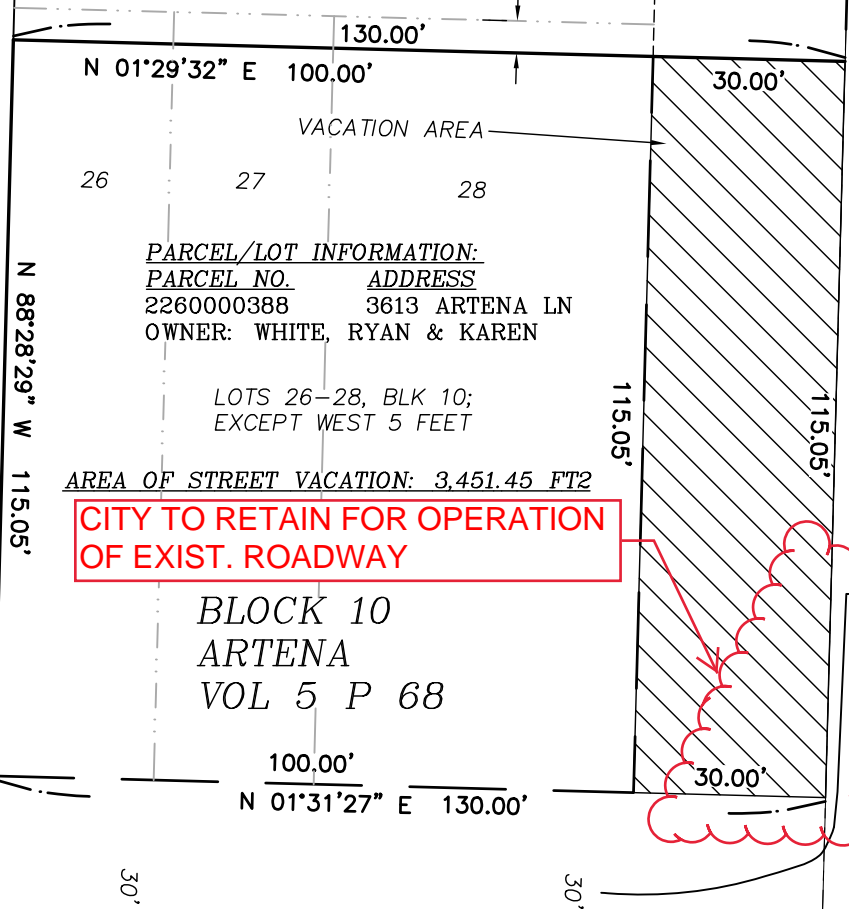
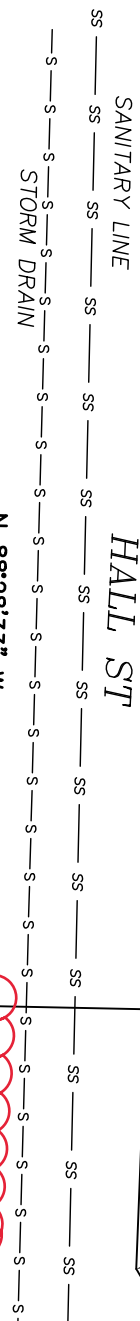


Maxar, Microsoft, Copyright 2021 HxIP.

City of Gig Harbor

The map features are approximate. All data is provided "as-is" and "with all faults." The City assumes no liability for variations ascertained by actual survey.

VACATED HALL ST
CITY ORDINANCE 1023,
AFN'S 200608230906 &
200704060159



PARCEL/LOT INFORMATION:
PARCEL NO. ADDRESS
2260000388 3613 ARTENA LN
OWNER: WHITE, RYAN & KAREN

LOTS 26-28, BLK 10;
EXCEPT WEST 5 FEET

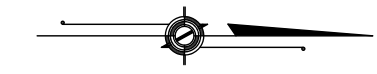
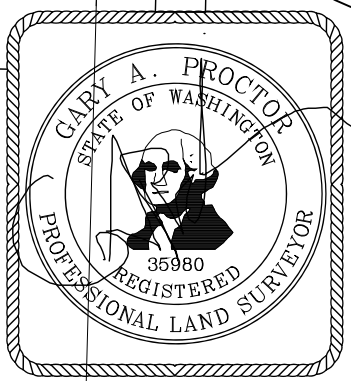
AREA OF STREET VACATION: 3,451.45 FT²

**CITY TO RETAIN FOR OPERATION
OF EXIST. ROADWAY**

BLOCK 10
ARTENA
VOL 5 P 68

100.00'
N 01°31'27" E 130.00'

MILTON AVE



NW 5, TWP 21N, RNG 2E, WM



GRAPHIC SCALE - FEET



PUBLIC WORKS DEPARTMENT

MEMORANDUM

TO: Public Works Committee

FROM: Jeff Langhelm, PE, Public Works Director

DATE: October 8, 2021

SUBJECT: PROS Plan Update

To remain eligible to receive grant funds from the Washington State Recreation and Conservation Office (RCO), the City is required to update its Parks Recreation and Open Space (PROS) Plan every six years. The City's current PROS Plan expires March 1, 2022. In June 2021 the City selected Conservation Technix to support the Parks Commission and Staff in developing the City's 2022 PROS Plan.

As part of the Conservation Technix scope the public completed an on-line survey. The Parks Commission's PROS Plan Subcommittee and Staff have completed a preliminary review of the survey report (attached). Conservation Technix, the Subcommittee, and Staff are also participating in stakeholder meetings as outlined to the Public Works Committee in August.

The next steps in the development of the PROS Plan include providing a status update with the Public Works Committee at the October 12 meeting, completing stakeholder meetings, and developing of a draft PROS Plan. Conservation Technix, the Subcommittee, and Staff continue this work under tight timelines to meet the PROS Plan milestones and will be ready at the October 12 meeting to review the survey report, discuss the final steps in the PROS Plan development, and answer questions from the Committee.

To: Jeff Langhelm, City of Gig Harbor Public Works Director
From: Steve Duh, Conservation Technix, Inc.
Date: October 3, 2021
Re: **City of Gig Harbor Parks, Recreation & Open Space Plan**
Community Survey Summary Results

Conservation Technix is pleased to present the results of a survey of the general population of the City of Gig Harbor that assesses residents' recreational needs and priorities.

KEY FINDINGS

Gig Harbor residents strongly value their parks and recreation facilities.

Nearly all residents (97%) think parks and recreation are important or essential to quality of life in Gig Harbor. Very few, less than 4%, feel they are useful, but not necessary, or not important at all.



Residents visit frequently and are generally very satisfied with existing parks, trails and recreation facilities, though they would like to see more waterfront access and trails.

Gig Harbor residents like to recreate – more than four in ten visit waterfront parks or use a paved or soft-surface trail at least one a week and more than seven in ten do so at least one a month. The Cushman Trail, Skansie Brothers Park, Jerisich Dock, and Ancich Waterfront Park are nearly universally popular, with over three quarters of residents having visited in the past year. A large majority of residents rated the condition of these parks highly.

Residents of Gig Harbor are less likely to have visited the city's special use or smaller neighborhood parks, only about one quarter have visited Adam Tallman Park, the Peninsula Light Fields, Shaw Park, KLM Veterans Memorial Park, and the Skate Park in the past year. However, the majority (60-70%) of residents who rated the condition of these parks rated them as in excellent or good condition.

Residents generally feel the City has sufficient community events, sport fields & sport courts, developed parks with playgrounds, and picnic areas & shelters. However, many residents would like to see more walking and biking trails (46% feel there are not enough) and waterfront access (53%).

While residents prioritize maintaining existing parks and facilities, they are generally supportive of improving the City's park and recreation system as well.

When asked to rank their priorities for future City investment, residents prioritized maintaining existing parks, trails, and open spaces. Respondents to the mail survey then prioritized expanding trail opportunities as their second highest priority, while those who completed the online survey prioritized

developing currently owned park properties. Respondents to both survey formats ranked acquiring additional land for open space or parks as their lowest priorities.

Respondents were asked to describe one thing that they would like to see the City of Gig Harbor do to improve parks, trails, or natural areas. While residents left hundreds of specific comments and ideas, a few themes emerged:

- Numerous residents expressed a desire for enhanced maintenance and safety of Gig Harbor parks and open spaces.
- Residents would like to see continued investment in the expansion and maintenance of the city's trail system – both paved and soft-surface trails.
- Many residents asked the City to continue to maintain, improve, and expand the City's waterfront parks, docks, access points, and pathways.
- Many residents are concerned about the pace of ongoing development in Gig Harbor and want to make sure the City protects access to nature, trees, and open space for both people and wildlife.
- Residents expressed interest in, and enthusiasm for, a wide variety of park improvements and amenities – from a pool or splash pad to off-leash dog areas and sport-specific facilities.

Residents are generally supportive of paying additional fees or taxes to support the City's park, recreation and open space system, with about three in four residents were willing to pay at least \$4 per month.

SURVEY METHODOLOGY

In close collaboration with City of Gig Harbor staff and the Parks & Recreation subcommittee, Conservation Technix developed the 15-question survey that was estimated to take less than ten minutes to complete.

The City mailed 2,500 surveys to randomly chosen households within the city limits of Gig Harbor on August 18, 2021, and reminder postcards were mailed to the 2,500 households on August 30th. An online version of the survey was posted to the City’s website in mid-August. Residents who did not receive a mail survey were able to complete the survey online. Overall, 420 responses were completed from the random-sample mail survey (17% response rate), and 932 responses were generated via the online link published on the City’s website. In total, 1,352 survey responses were recorded.

Information about the survey was promoted on the City’s website, through multiple social media postings, and with posters with QR code for the online-only survey located at _____. The survey was closed on September 11, 2021, and data were compiled and reviewed.

Although households were randomly chosen to receive the mail survey, respondents were not necessarily representative of all city residents. See the table below for age demographics for the mail and online surveys below as well as comparative percentages for Gig Harbor’s population.

Figure 1. Age demographics of survey respondents

Age group	Survey Respondents			Gig Harbor	
	Mail	Online-only	Combined	All	Over 20
Under 20	0%	<1%	<1%	25%	--
20 to 34	5%	9%	8%	13%	17%
35 to 44	17%	27%	24%	13%	18%
45 to 54	11%	19%	16%	12%	15%
55 to 64	19%	17%	18%	13%	17%
65 to 74	29%	17%	21%	12%	16%
75 and older	20%	10%	14%	12%	16%
Total	100%	100%	100%	100%	100%

This report includes findings of community opinions based principally on mailed survey responses. Each section also notes key differences between different demographic groups and among responses to the online-only survey, where applicable.

Percentages in the report may not add up to 100% due to rounding.

DETAILED FINDINGS

Value and use of parks and recreation

How much do residents value parks and recreation?

Virtually all residents (97%) feel that local parks, recreation opportunities are important or essential to the quality of life in Gig Harbor. More than eight in ten residents feel that they are essential; while an additional 14% believe that they are important to quality of life, but not essential. Less than 1% of respondents believe parks are “Useful, but not important”.

Figure 2. When you think about what contributes to the quality of life in Gig Harbor, would you say that public parks and recreation opportunities are...

Response options	Mail	Online-only	
Essential to the quality of life here	83%	97%	88%
Important, but not really necessary	14%		11%
Useful, but not important	3%	<1%	
Not important or don't know	1%	<1%	

Though residents of all ages value parks and recreation, younger residents were more likely to deem them essential to quality of life. Residents with children at home, as well as those who responded to the online survey, also valued parks and recreation even more strongly than the average mail survey respondent.

How often do residents use various parks and recreation facilities?

Respondents were asked how often – prior to the COVID-19 pandemic – they, or members of their household, visited, used, or participated in a list of recreational amenities.

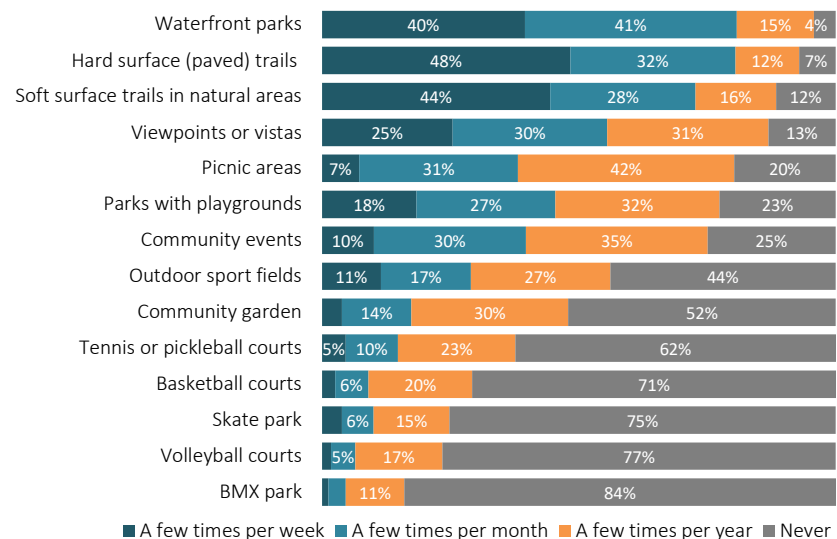
Residents visited waterfront parks, hard surface trails, and soft surface trails most frequently. More than seventy percent of residents visited these places at least a few times per month. These amenities were also frequented by residents of all ages.

On average, parks with playgrounds and picnic areas

were visited more frequently by younger residents, particularly those between 35 and 44 years of age. These facilities are also popular among households with children, as are sports fields.

Facilities that cater to a specific type of recreational activity, including sports fields; community gardens; tennis, pickleball, basketball, and volleyball courts; skate parks; and BMX parks were not frequently used by most residents. In fact, except for sports fields, more than half of respondents said they had never visited these facilities.

Figure 3. Prior to the COVID-19 quarantine, how often did you or household members visit, use or participate in each of the following?



Respondents who live in the northern portion of the city were less likely than residents elsewhere to have visited a viewpoint or picnic area, but more likely to have used a sports field or court. Online-only survey respondents tend to visit similarly to mail survey respondents.

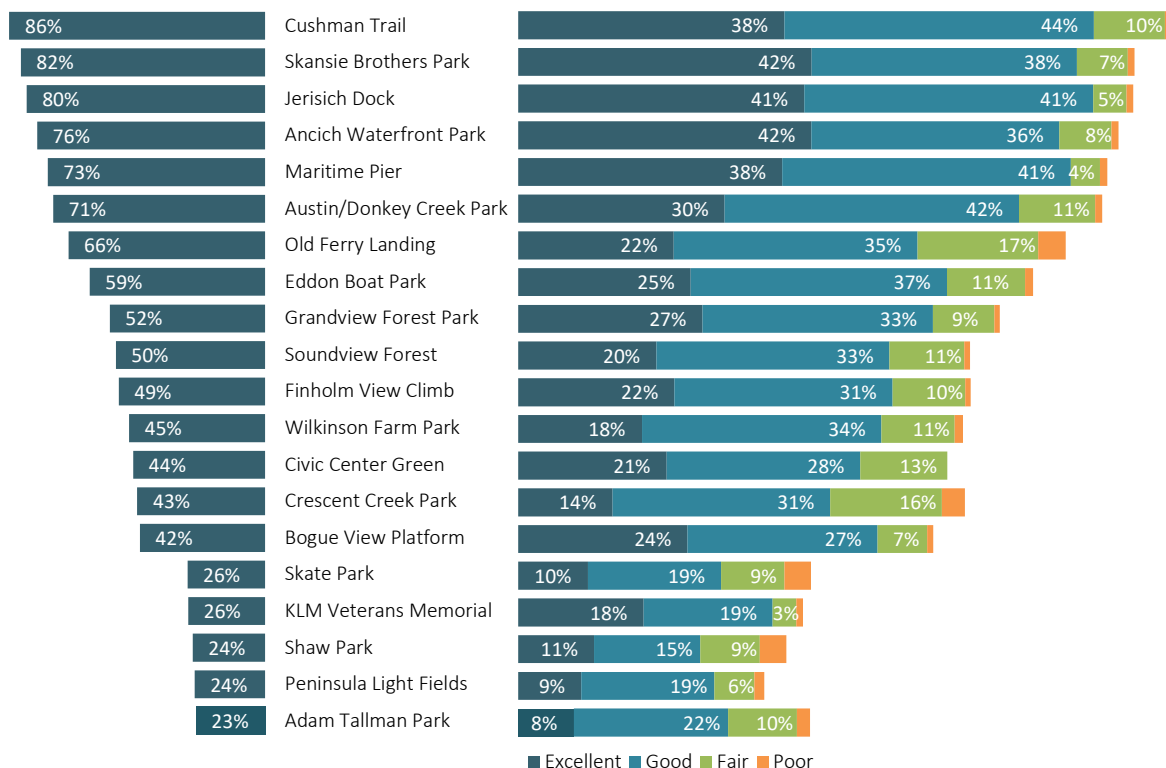
Which Gig Harbor parks do residents use? How would they rate their condition?

Residents were asked about which parks they have visited in the past year and about the condition of all City parks, trails, and open spaces. More than two in three residents have visited Gig Harbor’s most popular parks and trails: the Cushman Trail (86%), Skansie Brothers Park (82%), Jerisich Dock (80%), Ancich Waterfront Park (76%), Maritime Pier (73%), Austin Park / Donkey Creek Park (71%), and Old Ferry Landing (66%). These parks were popular with residents citywide. In general, residents rated the condition of these parks and trails as either ‘excellent’ or ‘good’, though ratings were lower for Old Ferry Landing. Approximately half of city residents have visited Eddon Boat Park, Grandview Forest Park, Soundview Forest, and Finholm View Climb in the past year, and 50% to 60% of rated the condition of these parks highly.

About four in ten residents had visited Wilkinson Farm Park, Civic Center Green, Crescent Creek Park, and the Bogue View Platform in the past year. About half of residents rated the condition of these parks as ‘excellent’ or ‘good’, like many more frequently used parks, though an equivalent percentage of residents also responded they ‘don’t know’. The Skate Park, KLM Veteran’s Memorial Park, Shaw Park, Peninsula Light Fields, and Adam Tallman Park were frequented by the lowest percentage of residents, which could be due to many factors, including the size, location, or facilities of these parks.

Residents with children at home were more likely to have visited parks with sports fields or courts than those without children in the home. There were no consistent significant variations in how residents rated the condition of parks and facilities based on age or location of residence.

Figure 4. (left side) Which of the following City of Gig Harbor parks have you visited in the last year?
(right side) ...How would you rate the condition of each park?



Why don't residents visit more often?

When asked why they do not visit Gig Harbor parks, recreation, or open space facilities more often, many residents responded that they do visit (52%). However, approximately one in seven residents responded that they do not visit more often either because of a lack parking (16%), lack of information (15%), or because of age or physical limitations (14%).

In addition, multiple residents wrote responses citing a recent move to the area, their age or ability, or the COVID-19 pandemic as reasons they do not visit more. Others mentioned safety concerns or a lack of desired amenities in their response.

Some residents use parks or facilities provided by other cities or organizations (6%) or are too busy (9%) suggesting that further improvements would not increase their use of parks.

Overall, respondents to both the mail and online-only survey expressed similar reasons for not visiting Gig Harbor parks, facilities, and open spaces more frequently. Younger residents (under 44) were more likely than other groups to cite over-crowding, a lack of information, or their use of facilities provided by other organizations as reasons they do not visit more often. Residents between 45 and 64 were more likely to respond that limited parking, poor accessibility, or a lack of interest were why they do not visit more often. Residents over 65 were the most likely to cite age or physical limitations as a key barrier. Residents who live in the northern part of Gig Harbor were more likely than residents elsewhere to say that they do not know what is offered. Respondents from outside Gig Harbor were more likely than residents who live in the city to cite over crowing as an issue that prevents them from visiting more.

Figure 5. What are the main reasons, excluding the COVID-19 pandemic, you or your household has NOT visited Gig Harbor parks, recreation facilities or open spaces in the past year?

Reason	Mail	Online
N/A – I/we use them often	52%	50%
Not enough parking	16%	19%
I do not know what is offered	15%	16%
Age or physical limitations	14%	10%
Other	11%	13%
Too crowded	10%	10%
Too busy	9%	9%
Not enough restrooms	8%	10%
Use those provided by another city, organization, or private club	6%	7%
Do not have the right equipment	4%	6%

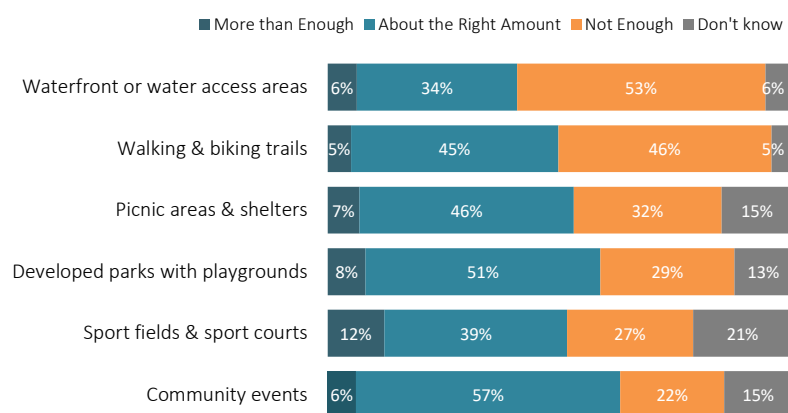
Less than 5% in both surveys cited: Not interested in park/recreation activities, barriers related to physical accessibility, do not feel safe, are not well maintained

Does the number of existing park and recreation amenities meet residents' needs?

Residents generally feel that the City already provides enough, or more than enough, of all of the amenities listed.

If respondents who answered "Don't Know" are excluded from the results, 57% of residents believe there is not enough access to water or the waterfront. Another 48% feel there are not enough walking and biking trails. Between 33% and 38% of residents who rated the options believe that there is not enough

Figure 6. When it comes to meeting the needs for parks, trails and recreation facilities, would you say there are...



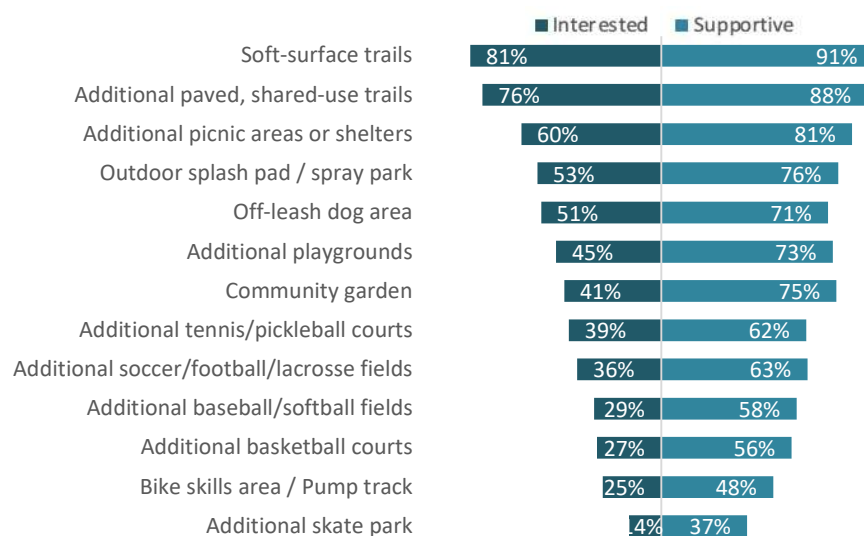
access to picnic areas, sports fields and courts, and developed parks.

Younger residents – especially those between 35 and 44 – were more likely than older residents to feel there were not enough developed parks with playgrounds, sports fields, and community events. Additional waterfront access and trails were desired by residents of all ages. Residents with children in their home are more likely than those without to believe there are not enough of every listed amenity.

What park and recreation options do residents have an interest in? Would they support adding more of these options to Gig Harbor’s park system?

The survey asked residents a pair of questions regarding their interest in, and support for, typical park and recreation facilities. Residents indicated a high level of interest in both soft- and hard-surface trails, with more than 75% of respondents interested in these facilities. More than half of residents are interested in additional picnic areas, outdoor splash parks, and off-leash dog areas.

Figure 7. Please indicate if your household has an interest in each of the amenities listed... [and] indicate your level of support for possibly adding each to the City of Gig Harbor’s park system. Adding amenities may mean higher City expenses.



Younger residents, especially those under 45, expressed a greater interest in playgrounds, bike skills areas, splash pads, skate parks, and sports fields and courts as compared to older residents. Residents between 45 and 64 years of age were more likely than younger residents to be interested in off-leash dog areas, picnic areas, and paved trails.

For all options listed, more residents were supportive of adding facilities to the system than were personally interested in them. More than three quarters of residents were very or somewhat supportive of adding soft- and hard-surface trails, picnic areas, and splash pads. More than half support more off-leash dog areas, playgrounds, community gardens, and sports fields and courts. Less than half of residents were supportive of adding more a bike skills area / pump track or an additional skate parks, but even for these facilities, about twice as many residents supported the improvement as were themselves interested in using it.

Residents with children in their household were more interested in, and supportive, of city investment in playgrounds, bike skills areas or pump tracks, skate parks, splash pads, sports fields, and basketball courts than those without children at home. Residents across the City are have similar levels of interest in the listed amenities.

Investment and revenue priorities

What recreation and park investments would residents prioritize?

Residents were asked to rank a list of potential park, recreation and open space investments. Generally, respondents to both the mail and online survey ranked maintaining existing parks, trails, and open space as their top priority.

However, respondents to the mail survey prioritized expanding trail opportunities as their second highest priority, while those who completed the online survey prioritized developing currently owned park properties. Respondents to both survey formats ranked acquiring additional land for open space or parks as their lowest priorities.

Residents with children in their home tended to rate developing new parks or adding amenities to existing parks as higher priorities than those without children in the home, who were more likely to rate maintaining existing parks and facilities as a high priority. Residents did not vary significant in their priorities depending on which part of the city they live in.

Do residents have specific improvements they would like to see?

Respondents were asked to describe one thing that they would like to see the City of Gig Harbor do to improve parks, trails, or natural areas. While residents left hundreds of specific comments and ideas, a few themes emerged:

- Numerous residents expressed a desire for enhanced maintenance and safety of Gig Harbor parks and open spaces. Residents mentioned concerns about general maintenance, dog waste, trash, homeless campsites, and potential car prowls.
- Residents would like to see continued investment in the expansion and maintenance of the city’s trail system – both paved and soft-surface trails. There was notable support for extending the Cushman Trail and providing additional amenities, such as benches, trash cans, and dog bag dispensers along its length. Many residents also asked the city to invest in pedestrian and bicyclist access and safety improvements (sidewalks, crossings, bike lanes, etc.) generally.
- Many residents asked the City to continue to maintain, improve, and expand the City’s waterfront parks, docks, access points, and pathways. Some residents requested more pedestrian and bicycle connections from neighborhoods to the waterfront, while others hoped the City would provide more parking.
- Many residents are concerned about the pace of ongoing development in Gig Harbor and want to make sure the City protects access to nature, trees, and open space for both people and

Figure 8. ... Indicate how you would rank the priority for each.

	Mail	Online
Highest	<ul style="list-style-type: none"> ▪ Maintain existing, developed parks, trails & open space ▪ Expand trail opportunities ▪ Develop current, city-owned park property ▪ Install new amenities in existing parks ▪ Acquire additional open space or natural areas 	<ul style="list-style-type: none"> ▪ Maintain existing, developed parks, trails & open space ▪ Develop current, city-owned park property ▪ Install new amenities in existing parks ▪ Expand trail opportunities ▪ Acquire additional open space or natural areas
Lowest	<ul style="list-style-type: none"> ▪ Acquire additional parkland 	<ul style="list-style-type: none"> ▪ Acquire additional parkland

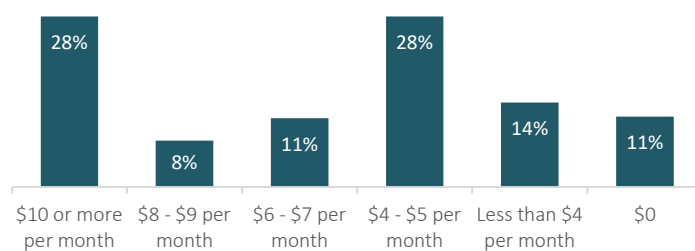
wildlife. Some residents also expressed concerns about the impact of new development on parking availability and road safety and capacity.

- Residents expressed interest in, and enthusiasm for, a wide variety of park improvements listed elsewhere in the survey, including the development of a pool or splash pad, off-leash dog areas, and sport-specific facilities, including a golf driving range, lit and/or artificial turf sports fields, sport courts, improved kayak/boat access on the waterfront, and additional playgrounds.

Are residents willing to pay more to develop and operate parks, trails, and recreation facilities?

The survey asked residents about the approximate additional amount they would be willing to pay to develop and operate the types of parks and recreation programs most important to their household. Nearly one in three respondents (28%) would be willing to pay \$10 or more per month. Another 19% would be willing to pay between \$6 and \$9 per month. Approximately 28% would be willing to pay \$4 to \$5 per month more, while 14% would be comfortable paying less than \$4 per month. Eleven percent of respondents would not be willing to pay more to develop or operate facilities, including nearly one in four seniors over 75. In general, younger residents and those with children in the home were more willing to pay higher additional amounts to fund park and recreation improvements than older residents.

Figure 9. ...what is the approximate additional amount you would be willing to pay to develop and operate the types of parks, trails and recreation facilities that are most important to your household?

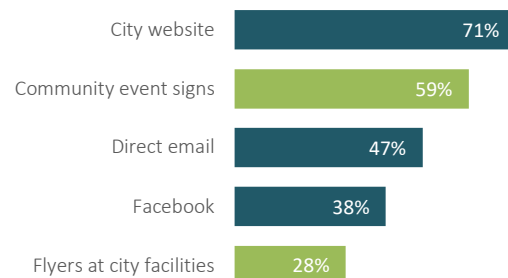


Communication preferences

How do residents want to hear about Gig Harbor’s parks, waterfront, and trails?

More than seventy percent of residents would prefer to learn about City parks, waterfront, and trails through the City’s website. Direct email and Facebook, also online methods, are also popular with residents and are preferred by 47% and 38% respectively. These online sources were even more popular with respondents to the online-only survey. Notably, many more online-survey respondents would prefer to receive information through Facebook (62%) as would over 60% of adults under 45 years of age.

Figure 10. Please check ALL the ways you would prefer to learn about Gig Harbor’s parks, waterfront, and trails.



Nearly six in ten residents prefer to learn about City offerings through community event signs (59%). This type of signage was preferred over flyers within city facilities (28%).

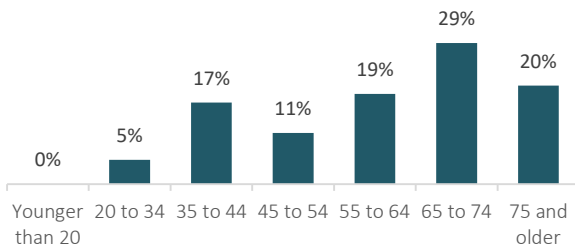
There were no significant differences in communication preferences between residents living in different areas of the city or those with children in the home versus those without.

Demographics

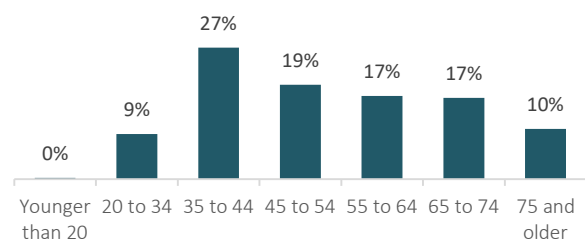
Age

Approximately half of respondents to the mail survey were over 65 years of age (49%). Another 29% were between 45 and 64, while 17% were between 35 and 44. Only 5% of respondents were less than 35 years old. Online-only survey respondents tended to be younger than those who responded to the mail survey – 9% were under 35 years old, 64% were between 35 and 64 years, and only 27% were over 65.

Figure 11. Mail survey



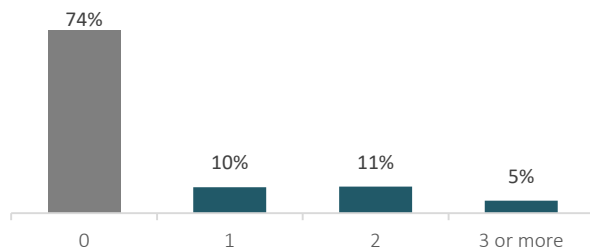
Online-only survey



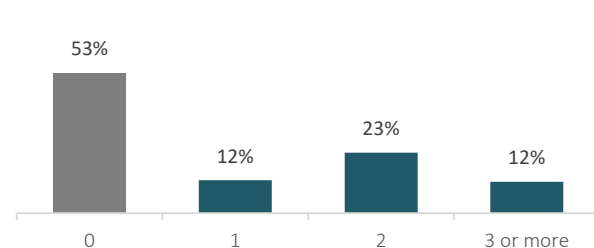
Number of children in household

The majority (74%) of respondents to the mail survey live in households with no children under 18, while about just over one-fourth live in a household with either one (10%), two (11%), or three or more (5%) children. Online-only survey respondents were significantly more likely to live in households with children than respondents to the mail survey – just under half (47%) had children in the home.

Figure 12. Mail survey



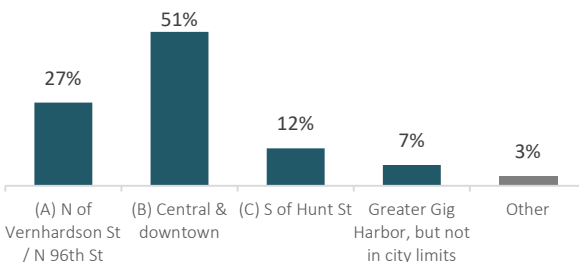
Online-only survey responses



Location of residence

Mail survey respondents live predominantly in downtown or central Gig Harbor (51%), while just over one quarter live in areas north of Vernhardson St. About 10% of respondents live outside of Gig Harbor's city limits. The online survey garnered significantly more respondents from the greater Gig Harbor area (35%) and further areas (10%).

Figure 13. Mail survey



Online-only survey responses

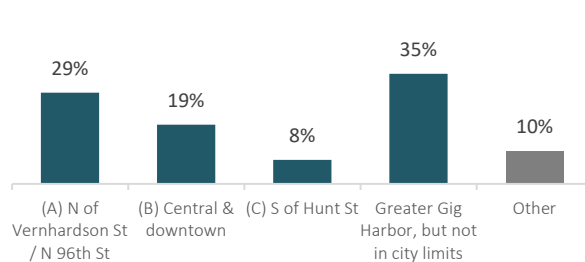
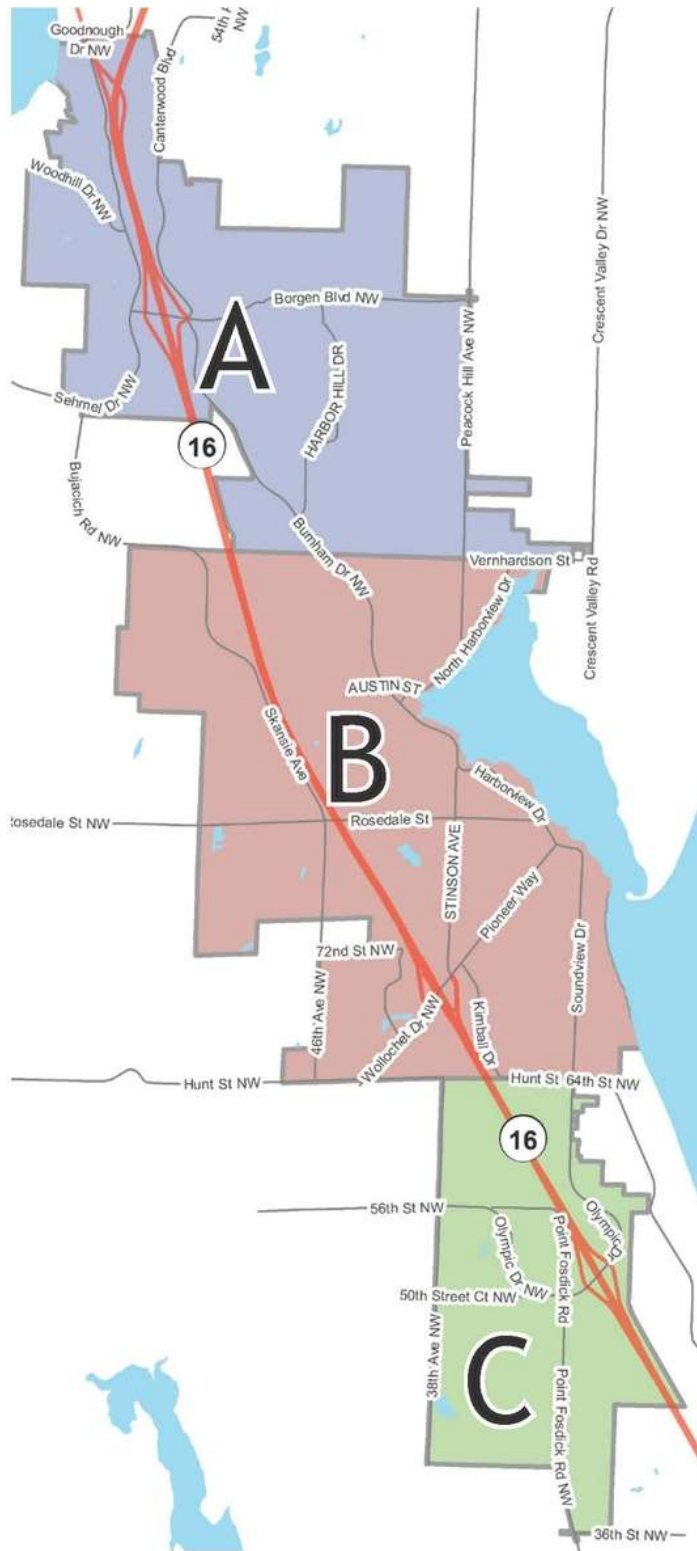


Figure 14. Location Map



ATTACHMENT 1. SURVEY INSTRUMENT



Community Survey on Parks and Recreation

Dear Gig Harbor Resident:

The City of Gig Harbor is beginning a community process to update the citywide Recreation, Parks and Open Space (PROS) Plan. We need your help to determine how to prioritize projects and what we should focus on to keep our parks thriving for the next 6-10 years. As an initial step, the City is conducting this short survey to assess the community’s recreation preferences. We are talking about the parks and open spaces inside the city limits and not those in other areas of the peninsula run by PenMet Parks or Washington State.

The City has several exciting projects underway that will add new amenities to the park system. These include a paddler’s dock and lockable boat storage racks at Ancich Waterfront Park and designing a connection from the Cushman Trail to Harborview Drive. The City also is partnering with the YMCA to develop a 17-acre sports complex to add two, lighted artificial turf fields, pickleball, bocce ball, trails, playgrounds, picnic shelters and parking.

We understand that COVID-19 has changed how you visit parks and participate in recreation activities this year. We ask that you consider needs for the future as you evaluate recreation amenities.

Your opinions are important to the City. The survey has 13 questions and will only take a few minutes to complete. Use the QR code to take this survey online at <https://www.surveymonkey.com/r/GigHarborPROS>



1. When you think about what contributes to the quality of life in Gig Harbor, would you say that public parks and recreation opportunities are... (CHECK ONE OPTION)

- Essential to the quality of life here
- Important, but not really essential
- Useful, but not necessary
- Not Important
- Don’t know

2. Prior to COVID-19, how often did you or household members visit, use or participate in each of the following?

	Frequently (few times/ week)	Occasionally (few times/ month)	Rarely (few times/ year)	Never
Waterfront parks	<input type="checkbox"/>	<input type="checkbox"/>	<input type="checkbox"/>	<input type="checkbox"/>
Parks with playgrounds	<input type="checkbox"/>	<input type="checkbox"/>	<input type="checkbox"/>	<input type="checkbox"/>
Picnic areas	<input type="checkbox"/>	<input type="checkbox"/>	<input type="checkbox"/>	<input type="checkbox"/>
Community garden	<input type="checkbox"/>	<input type="checkbox"/>	<input type="checkbox"/>	<input type="checkbox"/>
Community events (such as Movies in the Park)	<input type="checkbox"/>	<input type="checkbox"/>	<input type="checkbox"/>	<input type="checkbox"/>
Soft surface walking trails through natural areas	<input type="checkbox"/>	<input type="checkbox"/>	<input type="checkbox"/>	<input type="checkbox"/>
Hard surface (paved) trails for biking/hiking/walking	<input type="checkbox"/>	<input type="checkbox"/>	<input type="checkbox"/>	<input type="checkbox"/>
Viewpoints or vistas (such as Old Ferry Landing Park)	<input type="checkbox"/>	<input type="checkbox"/>	<input type="checkbox"/>	<input type="checkbox"/>
Outdoor sport fields	<input type="checkbox"/>	<input type="checkbox"/>	<input type="checkbox"/>	<input type="checkbox"/>
Tennis or pickleball courts	<input type="checkbox"/>	<input type="checkbox"/>	<input type="checkbox"/>	<input type="checkbox"/>
Basketball courts	<input type="checkbox"/>	<input type="checkbox"/>	<input type="checkbox"/>	<input type="checkbox"/>
Volleyball courts	<input type="checkbox"/>	<input type="checkbox"/>	<input type="checkbox"/>	<input type="checkbox"/>
Skate park	<input type="checkbox"/>	<input type="checkbox"/>	<input type="checkbox"/>	<input type="checkbox"/>
BMX park	<input type="checkbox"/>	<input type="checkbox"/>	<input type="checkbox"/>	<input type="checkbox"/>

Save a stamp! Use the QR code and take this survey online:

<https://www.surveymonkey.com/r/GigHarborPROS>

Or send it back in the enclosed Return-Reply envelope provided. Thank you in advance for participating!



3. Please check ALL the ways you would prefer to learn about Gig Harbor’s parks, waterfront and trails.

- City website
- Facebook
- Direct email
- Community event signs
- Flyers at city facilities
- None of these
- Other: _____

4. When it comes to meeting the needs for parks, trails and recreation facilities, would you say there are... (CHECK ONLY ONE BOX IN EACH ROW)

	More than Enough	About the Right Amount	Not Enough	Don't Know
Developed parks with playgrounds	<input type="checkbox"/>	<input type="checkbox"/>	<input type="checkbox"/>	<input type="checkbox"/>
Walking & biking trails	<input type="checkbox"/>	<input type="checkbox"/>	<input type="checkbox"/>	<input type="checkbox"/>
Sport fields & sport courts	<input type="checkbox"/>	<input type="checkbox"/>	<input type="checkbox"/>	<input type="checkbox"/>
Picnic areas & shelters	<input type="checkbox"/>	<input type="checkbox"/>	<input type="checkbox"/>	<input type="checkbox"/>
Waterfront or water access areas	<input type="checkbox"/>	<input type="checkbox"/>	<input type="checkbox"/>	<input type="checkbox"/>
Community events (such as Movies in the Park)	<input type="checkbox"/>	<input type="checkbox"/>	<input type="checkbox"/>	<input type="checkbox"/>

5. Which of the following City of Gig Harbor parks have you visited in the last year AND how would you rate the condition of each park?

	Yes, Have Visited	No, Have Not Visited	Excellent	Good	Fair	Poor	No Opinion
Adam Tallman Park	<input type="radio"/>	<input type="radio"/>	<input type="checkbox"/>	<input type="checkbox"/>	<input type="checkbox"/>	<input type="checkbox"/>	<input type="checkbox"/>
Ancich Waterfront Park	<input type="radio"/>	<input type="radio"/>	<input type="checkbox"/>	<input type="checkbox"/>	<input type="checkbox"/>	<input type="checkbox"/>	<input type="checkbox"/>
Austin Park/Donkey Creek Park	<input type="radio"/>	<input type="radio"/>	<input type="checkbox"/>	<input type="checkbox"/>	<input type="checkbox"/>	<input type="checkbox"/>	<input type="checkbox"/>
Bogue View Platform	<input type="radio"/>	<input type="radio"/>	<input type="checkbox"/>	<input type="checkbox"/>	<input type="checkbox"/>	<input type="checkbox"/>	<input type="checkbox"/>
Civic Center Green	<input type="radio"/>	<input type="radio"/>	<input type="checkbox"/>	<input type="checkbox"/>	<input type="checkbox"/>	<input type="checkbox"/>	<input type="checkbox"/>
Crescent Creek Park (incl. BMX & sand volleyball)	<input type="radio"/>	<input type="radio"/>	<input type="checkbox"/>	<input type="checkbox"/>	<input type="checkbox"/>	<input type="checkbox"/>	<input type="checkbox"/>
Cushman Trail	<input type="radio"/>	<input type="radio"/>	<input type="checkbox"/>	<input type="checkbox"/>	<input type="checkbox"/>	<input type="checkbox"/>	<input type="checkbox"/>
Eddon Boat Park	<input type="radio"/>	<input type="radio"/>	<input type="checkbox"/>	<input type="checkbox"/>	<input type="checkbox"/>	<input type="checkbox"/>	<input type="checkbox"/>
Finholm View Climb	<input type="radio"/>	<input type="radio"/>	<input type="checkbox"/>	<input type="checkbox"/>	<input type="checkbox"/>	<input type="checkbox"/>	<input type="checkbox"/>
Grandview Forest Park	<input type="radio"/>	<input type="radio"/>	<input type="checkbox"/>	<input type="checkbox"/>	<input type="checkbox"/>	<input type="checkbox"/>	<input type="checkbox"/>
Jerisich Dock	<input type="radio"/>	<input type="radio"/>	<input type="checkbox"/>	<input type="checkbox"/>	<input type="checkbox"/>	<input type="checkbox"/>	<input type="checkbox"/>
KLM Veterans Memorial Park	<input type="radio"/>	<input type="radio"/>	<input type="checkbox"/>	<input type="checkbox"/>	<input type="checkbox"/>	<input type="checkbox"/>	<input type="checkbox"/>
Maritime Pier	<input type="radio"/>	<input type="radio"/>	<input type="checkbox"/>	<input type="checkbox"/>	<input type="checkbox"/>	<input type="checkbox"/>	<input type="checkbox"/>
Old Ferry Landing	<input type="radio"/>	<input type="radio"/>	<input type="checkbox"/>	<input type="checkbox"/>	<input type="checkbox"/>	<input type="checkbox"/>	<input type="checkbox"/>
Peninsula Light Fields (Little League Fields)	<input type="radio"/>	<input type="radio"/>	<input type="checkbox"/>	<input type="checkbox"/>	<input type="checkbox"/>	<input type="checkbox"/>	<input type="checkbox"/>
Shaw Park	<input type="radio"/>	<input type="radio"/>	<input type="checkbox"/>	<input type="checkbox"/>	<input type="checkbox"/>	<input type="checkbox"/>	<input type="checkbox"/>
Skansie Brothers Park	<input type="radio"/>	<input type="radio"/>	<input type="checkbox"/>	<input type="checkbox"/>	<input type="checkbox"/>	<input type="checkbox"/>	<input type="checkbox"/>
Skate Park	<input type="radio"/>	<input type="radio"/>	<input type="checkbox"/>	<input type="checkbox"/>	<input type="checkbox"/>	<input type="checkbox"/>	<input type="checkbox"/>
Soundview Forest	<input type="radio"/>	<input type="radio"/>	<input type="checkbox"/>	<input type="checkbox"/>	<input type="checkbox"/>	<input type="checkbox"/>	<input type="checkbox"/>
Wilkinson Farm Park	<input type="radio"/>	<input type="radio"/>	<input type="checkbox"/>	<input type="checkbox"/>	<input type="checkbox"/>	<input type="checkbox"/>	<input type="checkbox"/>

9. The City of Gig Harbor is always working to provide you services you want efficiently and cost effectively. The costs to develop and maintain parks, trails and recreation amenities are expected to increase as the community grows and improvements are made. While no new property taxes or fees are currently being proposed, what is the approximate additional amount you would be willing to pay to develop and operate the types of parks, trails and recreation facilities that are most important to your household?
- \$10 or more per month
 - \$8 - \$9 per month
 - \$6 - \$7 per month
 - \$4 - \$5 per month
 - Less than \$4 per month
 - \$0

10. If you wanted the City of Gig Harbor to do just one thing to improve parks, trails and/or natural areas, what would it be?

The following questions help us understand whether we have a cross-section of the community responding to this survey. It's important that you provide a response to each question.

11. How many children under age 18 live in your household?

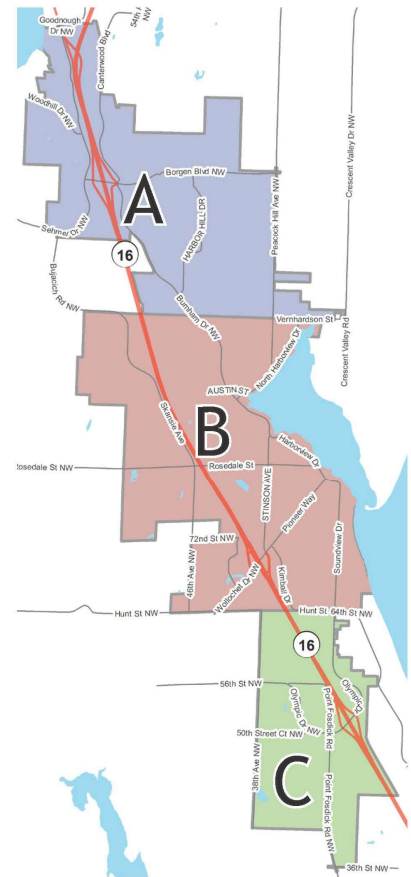
- 0
- 1
- 2
- 3 or more

12. What is your age?

- Younger than 20
- 20 to 34
- 35 to 44
- 45 to 54
- 55 to 64
- 65 to 74
- 75 and older

13. In which section of Gig Harbor do you live?

- (A) N of Vernhardson St / N 96th St
- (B) Central Gig Harbor & downtown
- (C) S of Hunt St
- Live in greater Gig Harbor area, but not inside the city limits
- Other (provide zip code) _____



Thank you for taking the time to complete this survey!

Your input will help guide the development of the Gig Harbor Parks, Recreation & Open Space Plan.

Take this survey online with the QR code or at: <https://www.surveymonkey.com/r/GigHarborPROS>

Learn more about Gig Harbor parks, trails and open spaces and stay informed about the Parks, Recreation & Open Space Plan process at <https://www.cityofgigharbor.net>



The City of Gig Harbor is using the services of a consultant team who specializes in park and recreation planning.

Please return your completed survey in the enclosed Return-Reply Envelope addressed to:

Conservation Technix Inc.
PO Box 12736
Portland, OR 97212

ATTACHMENT 2. OPEN-ENDED RESPONSES

Question 3. Please check ALL the ways you would prefer to learn about Gig Harbor's parks, waterfront, and trails.
(open-ended "other" responses)

Mail

- A city newspaper
- Banner over Harborview Dr. and reader board on SR16
- City newsletter via email
- Direct mail
- Direct mail
- Direct mailings
- Gateway
- Gateway & News Tribune
- Gateway Paper
- Gig Harbor Magazine
- Gig harbor patch
- Gig Harbor Visitor Guide magazine
- Google
- Google Maps
- Instagram
- Instagram
- Mail
- Mail
- Mail
- Maps of the GH parks or hold educational events in the parks
- Newsletters delivered by mail
- Newspaper
- Newspaper
- Periodic park magazine
- Regular mail when a new facility is opening
- Sign up text
- signage, occasional mailings, info at public library bulletin boards
- Subscription service via emails would be great!
- Text message
- Text message, 3-4 per month would be ok
- Text messaging
- Text notifications
- The Gig Harbor newspaper
- Twitter

- US Mail
- word of mouth

Online

- Anything but Facebook
- Chamber of Commerce website
- Continue biweekly city zoom calls. Really feel more connected
- Dedicated website
- direct emails
- Direct mailers
- Easily searched website(s)
- Email
- email
- email, text
- friends
- Gateway
- Gateway news paper - with 2 or more weeks advance notice
- Gig Harbor Community News blog - updates every few days or more frequent
- Gig Harbor Living Social monthly magazine
- Gig Harbor Twitter.
- I don't have a comment
- instagram
- Instagram
- Instagram
- Instagram
- Instagram
- local and regional area postings / flyers, bus, grocery and local stores
- Mass texts
- News
- News sites
- Newspaper stories in Gig Harbor Now.
- nextdoor
- Online news feed
- Patch.com
- PR of events
- press releases
- Printed Magazine mailed to my address
- Printed maps showing park locations.
- Snail mail. I don't have social media accounts.
- Social media including Instagram
- Subscribed Emails
- text alerts maybe?

- The Gateway
- The Peninsula Gateway Newspaper
- Through school newsletters
- thru Herons Key publications
- Twitter
- Twitter
- Twitter
- Use Patch
- via sports organizations sites and social media (e.g. Harbor Soccer, Pen Met, Pen Schools)
- Visitor center sign (not fliers)
- Volunteer club to maintain quality at parks
- Zoom call or recording

Question 6. What are the main reasons, excluding the COVID-19 pandemic, you or your household has NOT visited Gig Harbor parks, recreation facilities or open spaces in the past year? (open-ended “other” responses)

Mail

- Been here two years
- Boat launch on North harbor needs to be lengthened, needs a second dock, and more parking.
- Busy with other activities, but should take more advantage of opportunities offered
- Chairs being set up and left for hours prior to event
- Don't have kids
- Due to limited mobility, I often just sit in my car and watch
- Entrances, trails not clear if okay to use or are part of private property
- Grandview Forest & Soundview Forest do not feel safe - not enough visibility. Too many trees. The trees should be at least limbed up to allow better visibility. I love Adam Tallman Park but the paths are often not maintained (overgrown by blackberries or other bushes). Most other parks are well maintained.
- Have my own park on my property
- Hearing of car thefts
- I didn't know of these places.
- I do not know where they are
- I don't know where all of them are
- I use all the parks but my husband is disabled and not all are easily accessible.
- I use Cushman Trail
- I use what I want to use
- job, responsibilities
- Just moved here
- Just now had a child
- lack of sidewalks and crosswalks to park from neighborhood
- limited opportunities for seniors. We use Civic Center Green or KLM park for Bocce several times a month for Bocce but the gras shas not maintained

- Mobility not available for books right now
- more access (physical and visual) to waterfront views
- More pickle ball courts
- My kids are just now old enough to start going!
- Need pickleball courts
- New to GH - not yet familiar
- No disc golf
- No pickle ball courts or senior center
- No small children & widowed
- No trails or dog options
- Not enough play structures
- Not enough public trash cans
- Recently moved to town
- Restrooms closed too long because of vandalism
- Still need some more picnic tables in various parks to entice more visitors to return!
- The tennis courts are full often in GH so I usually play in Tacoma on a metro parks court
- Theft/damage to car while parked
- We mostly use dog friendly parks/areas
- Weather
- Wish more bike accessibility. Not enough bike lands to get around

Online

- A lot of the parks are quite small. Aren't worth a car drive to visit. I would need trails, water activities, sport fields, and dog access that would last 2+ hours of my time. Some have these features, but it seems most only have a few things to do.
- All of the kids parks feel cheap, take a look at Battlepoint Park on Bainbridge, or the new city park in Suquamish even, both have extensive engineering and architecture thought planning. Also, we desperately need a community pool.
- Alternatives available
- As an aside, leaving one's car in a parking lot is getting increasingly risky...even in our beloved Gig Harbor.
- Because lack of lighted field space in winter.
- Becoming less comfortable parking at Wilkinson and cushman trailheads due to break-ins/theft
- Can't have dogs off leash
- Cars are broken into at some locations
- Concerned about crime in parking areas example being Cushman Trail parking lots).
- Covid 19
- Covid only
- cushman trail - lack of security, concern re transient and other criminal activity
- Cushman trail does not feel safe. Need the new sports complex asap!
- Doesn't fit our family's interests. We have young children and would like more playgrounds, a pool/aquatic center, or events that take place during the day that our young children can attend
- Dog poop not picked up at Skansen before events
- Don't know about all the parks

- Don't know where the parks are located
- Don't offer what appeals to us. We are seniors
- Don't feel safe/ vandalism to cars/ homelessness
- Gig Harbor does not have a indoor water facility
- Go to places good for my small children
- Goose poop all over the parks
- Hardly any soccer fields
- I am answering this for myself and spouse and we have different physical abilities.
- I can only walk at the Y after tripping and breaking my knee in downtown GH
- I didn't know any of these parks existed. Need more swings, kid friendly events, especially recreational activities. I have zero idea when I sign up my kids for sports.
- I do not walk alone on Cushman or feel comfortable leaving my vehicle in the designated parking lots.
- I don't want my kids touching the playground equipment.
- I have not lived here very long and don't know what is here.
- I mostly just use the parks for volleyball. Would love a grass set up somewhere and more sand volleyball courts.
- I would like to walk to a park but I live down point Fosdick near the airport, there is not much to walk to with little kids around here
- In need of more volleyball courts
- It's hard to find adequate parking especially when walking abilities are very limited.
- Just move to the Community.
- Just moved here
- Just moved here six months ago
- Just moved to Gig Harbor and don't know all our options for parks
- Lack lighted turf fields
- Lack of outdoor swimming pools
- looking for walking paths close to the water, and away from car noise
- Moved to Gig in the last year and been getting settled.
- My kids are adults so playgrounds, LL fields are N/A. We also live on acreage and have trails/field for walking/bmx/playing
- Need dedicated pickleball courts
- Need more picnic tables & playgrounds
- Need more volleyball courts. Have to wait way too long to get on a court.
- Need soccer fields!!
- Need stroller friendly
- New baby
- No covered spaces for play in rainy season for kids
- No kids so don't use playgrounds or fields.
- No one reason, We use more when we have grandkids overnight. Other related activities in the harbor cause us to use/visit more too.
- No playground, pool, or kid-friendly activities
- No public pool
- Not enough fields and always taken by organized sports. We have gone to schools instead.
- Not enough lighting in the evening

- Not enough paved bike trails that are kid friendly and longer than a quick loop
- Not enough pickleball court
- Not enough Senior related facilities
- Not enough water access for a city with "Harbor" in its name
- Not kid friendly/interesting. Parking for Cushman trail is a safety hazard
- Our family spends 50 hrs combined on the sports fields each week.
- Park there at your own risk. Auto break-ins and vandalism way too common.
- Penmet park
- Prefer natural trails; not enough of those.
- Prefer to be on the beach but these beach parks are getting really really really crowded and dirty and unsafe. Cars broken into all the time and trash.
- Recently moved here
- Recently moved here.
- Reported break ins for vehicles
- restrooms closed for extended periods of time due to "vandalism" (grandview forest)
- SAFE parking
- Shaw Park is awful--and I see it from my window every day. It seriously needs work. It is an embarrassment to the city!
- Signage for directions
- Sketchy addicts in Cushman Trail scare me.
- Some of the parks seem like just a space not really thought about
- Some parks are small and out of the way during busy life. That's on me.
- Something has to be done about cushman parking lot safety
- Sport space
- The cushman trails feel dangerous now. Junkies and break ins
- The fields are always occupied by Harbor Soccer :(
- The parks we don't use are due to safety concerns (Cushman, skate park, etc), the ones we feel safe at we use regularly
- There are NO basketball courts near us
- There are only 2 parks that we haven't visited. For Shaw Park, I didn't know it existed. For the soccer fields, I've not had any playing soccer.
- There is nothing on this survey for seniors.
- Too far away. Not easily walkable or bikable
- Too many pickleball players hogging the basketball courts
- Trash is often overlooked and overflowing.
- We do go, but more of these would be useful. Actual restrooms: yes portaporties: no thank you 🤢
- We go to a lot of the parks, the ones we don't go to don't offer an unique experience that we find enjoyable. So grassy spots or view points aren't our thing, but playgrounds and trails are!
- We have a nice-to-be-in back yard!
- We have park like settings where I live
- We have seen used needles at a few parks
- We love to try different parks and trails. When we haven't been to a park it is usually because we haven't heard about it or the facility does not meet the activity we set out to do.
- We must have handicapped parking readily available and sure footing. Without those, we cannot participate.
- We only moved here two months ago.

- Weather. We need an INDOOR park for kids incredibly bad in the long rainy months.
- when I avoided parks it was because I was discouraged by the utter lack of enforcement on the gathering limits and face covering recommendations by the city
- When I don't go it's because something else is the priority of the moment
- Wish you would finish family harbor park. That was a huge let down when we raised all that money and it went to another park.
- with two small kids, we focus on spaces with outdoor toys for them.
- Would love a park for older kids with swings
- Would love to see more dog off leash area or dog parks

Question 10. If you wanted the City of Gig Harbor to do just one thing to improve parks, trails and/or natural areas, what would it be? (open-ended "other" responses)

Mail

- - Improve sidewalk along Harborview - wider, more access directly to water
- - Connect Waterfront trail to Cushman
- - Connect Cushman to Kitsap & Discovery Trail Sequim/Pt. Townsend
- - Develop Burnham Trail - both sides of Donkey Creek up to Borgen Blvd
- - Develop Crescent Creek trail up to Lake Crescent Park
- - Keep areas clear of "poop bags" left on trails, parks, etc.
- - Ample trash pick up & appropriate # of bins in high services areas.
- - more bike routes
- - more trees and flowers
- - eliminate sport complex plan instead establish central garden
- - splash pad installation & new playground & outdoor sports fields
- - indoor sports fields
- - The village
- "Monitor" at "Random Times" how the park is being used by visiting guests and regular members of the community
- 1) No playground for kids in downtown core
- 2) Connectivity for runners & walkers is challenging
- A brick & mortar bathroom at Wilkinson Farm Park, paved parking & more parking. Help w/the vole infestation at community garden.
- A child garden
- A complete car free connection for the Cushman trail and expanded bike/walking routes that will connect to the waterfront
- Access is typically the biggest barrier. Parking at Sehmel is a nightmare. Using public docks and boat launches is difficult because most adjacent neighborhoods don't allow street parking or parking is limited (e.g., downtown). I would be sad to see additional land clear cut beyond what is already planned, but it would be nice to have more than just Sehmel for athletic facilities.
- Acquire additional open space or natural areas
- Acquire additional undeveloped land in the city limits to preserve green space. Parcel 0221071091 is an example
- Acquire more land & keep it natural*. GH is being destroyed with \$\$\$ development. * or eco-friendly trails for walking & biking
- Acquire new parks
- Activities concentrate at Sehmel Park and not enough parking space. Need additional parks to offer activities to spread groups of people.
- Add a skate plaza - check out designs by Grindline Skate Parks Inc out of Seattle. This would be a tremendous addition to

the community. And maybe a better use of the Y Sports Complex land.

- Add additional staff to maintain and support the parks and trails we already have. There needs to be sufficient infrastructure to support what we have before we add more. This is not the time to raise taxes for parks. There are plenty of parks and trails if you include the county pen met parks.
- Add an additional playground w/good lines of sight, somewhat enclosed (like Crescent Creek Park), swings, and play structures for various ages
- Add and improve sidewalks
- Add covers basketball courts in area accessible to residents for free
- Add dedicated pickleball courts. I travel throughout the country and towns smaller than ours have converted tennis courts to dedicated pickleball courts. They would be a wonderful addition to our awesome Parks.
- Add fuel dock & multiple use to Maritime Pier
- Add lighted soccer fields to allow families with multiple children to have the chance to have games and practices in the same location and open up the opportunity for soccer tournaments to bring more revenue generation to local businesses.
- Add more
- Add more on-leash paths through woods for families with dogs
- Add more playgrounds and create an indoor playground for under 5! Kids have no where to play and burn off energy.
- Add more trails for biking and hiking.
- Add more trash receptacles and/or pet waste stations
- Add off-leash dog park areas in the downtown corridor
- Add trail walking areas
- Adding to, expanding, and improving existing playgrounds. Also innovative, outside-the-box ideas for current playgrounds and parks. We need a community public pool, like the one in Fircrest.
- Additional parking and bathrooms!
- Additional parking for parks we already have. Sidewalks along Rosedale from Stenson to Skansi - both sides of Rosedale. Sidewalks along south side of Harborview. Sidewalks along Hunt - north side - Soundview to top of hill.
- Additional playgrounds with activities for different aged children.
- Allow community police and fire more opportunities to showcase and engage with citizens in the parks to foster cooperation and understanding of these vital partnerships
- Bathrooms more of them
- Beach access for kayaks needed!
- Benches to sit where the Cushman Trail meets Burnham.
- better crosswalk access
- Better parking
- Better signage
- Better trail system and more connectivity. Even in existing parks e.g. Crescent Creek & Volleyball & BMX Track & Civic Center, Grandview Forest & Skate Park
- Build a community pool! This community has grown and changed. We need an OUTDOOR PUBLIC pool!
- Build a track! Only tracks available are at schools and they are closed to the public most of the time.
- Build more lighted turf fields for the growing sports in the area
- Build sports complex by YMCA!
- Build the fisherman's dock & have better access to the waterfront!
- Bury all of the wires/cables in downtown Gig Harbor, make Cushman Trail connect to downtown Gig Harbor by Donkey Creek
- Buy and remove undeveloped property from private owners in an attempt to reduce the over-building of our city. This is

our last chance from becoming little Bellevue.

- Buy more green area and save the lands from developers.
- Buy more parkland for the future
- Buy more parkland.
- Check and clean bathrooms more often
- City parks and green spaces should be free
- Clarify the Cushman Trail Bike Path around the City Center Hwy 16 Connector
- Clean up the trash and evict the drug addicts and not just in the parks.
- Clean up trails, have better maps at the entrances and forks
- Clean, sanitized, and well maintained public restrooms please.
- Cleanup underbrush - fire hazard and does not look good - especially in the "wetlands"
- Close lower downtown to auto traffic.
- Complete the Sports Park next to the Y
- Connect bike / walking trails network to allow for commuting and daily trip alternative other than driving
- Connect bike trails/walking trail from Burnham Blvd to Tacoma for safety.
- Connect Cushman Trail to waterfront
- Connect the Cushman trail at the top of Stinson to the beginning near Wilco without having to get on the Main Street or making it safer to ride a bike or walk and make that connection.
- Connectivity for walkers/bikers/etc. throughout the city and county.
- Consider an outdoor community pool
- Consider merger with PenMet Parks to reduce overhead and take advantage of combined efficiencies.
- Create more natural trails for hiking. Also better beach access for families hang out & access water.
- Decrease the amount of development allowed in Gig Harbor. Just on Canterwood Blvd alone 4 developments have been approved. Stop paving over Gig Harbor! Too many people!!!
- Develop facility that was formerly the driving range
- Develop sports fields across from Swiftwater Elementary
- Develop the space off Reid! I attended some of the meetings and am excited to have that space available to use in the future.
- Do not allow homeless people, no matter what to reside, occupy any portions of the city. Do not accommodate the homeless in Gig Harbor
- Do not drain the Harbor Hills ponds.
- Enforce posted signs! As a resident with a small dog, I encounter an issue at the dog park. Near the Bridge. People with several large dogs were in the area for small dogs & would not move them to the large dog area.
- Enforce rules that are already set
- Enhance parks for dogs
- Expand and further develop the Cushman Trail, add protected bike lanes and bike infrastructure throughout Gig Harbor
- Expand Cushman Trail
- Expand Cushman Trail, please.
- Expand open space land with more dirt trails and connectivity.
- Expand park areas to increase trails and natural areas.
- Expand parkland. City is getting overcrowded
- Expand paved bike trails
- Expand paved walking trails - for exclusive use for walking/biking. Navigating a walk or bike ride through busy

traffic/shopping areas with multiple traffic circles to pass safely through is troublesome.

- Expand soft nature trails
- Expand the waterfront park where concerts and movies are held.
- Expand trail opportunities
- Expand/connect the Cushman trail
- Extend Cushman Trail
- extend Cushman Trail
- Extend Cushman Trail to connect north to St. Anthony's hospital & bike trail on Bethel - Burley Road.
- Extend Cushman Trail to connect to Kitsap County
- Extend Cushman Trail to the north
- Family bathrooms with changing stations
- Fenced small dog park with benches and cover or trees for shade.
- Find the homeless shelter somewhere else
- Finish Ancich park
- Focus on activities that most Gig Harbor residents can use. Avoid "Historical" park projects & those of special limited interest groups (e.g. paddlers, storage, football, baseball (organized))
- Focus on maintenance. Provide more picnic areas. Enforce leash laws!
- For safety issues at Sehmel Park playground, flooring buckles and is tripping hazard
- Fun things for young children.
- Get the personal floating dock installed at Antioch Waterfront Park
- Good maintenance/frequent updates
- Grateful for our open spaces & trees & trails
- Have access transportation for power wheelchair residents
- Have clean public restrooms and trash receptacles to reduce litter.
- Highly maintain our waterfront park areas
- How about recreational facilities geared for seniors? Take a look at the demographics? Reduce cost/taxes. We have what we need including school playgrounds.
- I did not answer all the questions because I am physically handicapped and unable, on my own, to use facilities.
- I have seen too many constructions which is destroying the nature beauty of Gig Harbor
- I think an aquatic center should be #1 priority. Also, I think there should be a "Tot Lot" for kids aged 1-3 years old that has enclosure and gate. All the existing parks are challenging to bring young ones to because they cannot be contained in an area. The City of Fircrest has an excellent example of a Tot Lot I think would be beneficial in GH.
- I think the city should sell of Soundview Forest and use the revenue to improve on the existing parks or spend the money on the waterfront property they acquired. Soundview Forest is worthless and no one uses it.
- I use the path and trails near city hall. The largest problem is the kids using drug in the wooded area and destroying the restrooms.
- I wish the parks here were larger. Many of the "parks" listed are super tiny.
- I would like a community pool that has a retractable roof for year round use.
- I would like a way to find out what's available.
- I would love to see you invest some money into pedestrian traffic signals to organize their street crossings. I've noticed in NY that they work quite efficiently - and adds safety to the experience. Our pedestrians that we currently have tend to cross traffic like a herd of sheep.
- I'd like to see our trail system along Cushman trail expanded in Gig Harbor, as I love to walk for exercise and don't seem to be able to get in the car and go to nearby state parks for exercise very often. It's nice to walk just from leaving my house. I

live within the city limits and the sidewalk system in GH seems relatively new, safe and well maintained. I want to complement whoever cleans the public restrooms in town and along the Cushman trail. They are always clean and usually well maintained for the public. The public restrooms in Gig Harbor are the cleanest I've ever experienced!! Thanks. PS I don't mind paying extra through taxes or whatever to continue this standard for locals as well as visitors who come to GH.

- If I could check online to see what sport courts/fields are reserved that would be great
- Improve access and parking
- Improve accessibility for people of all ages and especially for those with physical disabilities
- Improve miniature golf (we love to play w/ great grandchildren)
- Improve parking and better senior citizen access to nature/water areas. Improve dangerous trail on south side of Grandview Forest Park and remove coyotes.
- Improve parking at these locations
- Improve parking/safety for people to use trails.
- Improve Shaw Park!
- Improve walkways
- Increase or improve areas where paddlers can enter or exit the water
- Increase opportunities for Seniors. It is obvious from the nature of these questions that Seniors are only on the "radar" when their interest matches the rest of the population. The planned Bocce and Pickle Ball courts near the YMCA are great but how 'bout some closer to the "Downtown"
- Increase waterfront opportunities
- Install a disc golf course! Period!
- Install better solar lights for the Cushman Trail.
- Interconnect all bike/walk trails to major parks and waterfront
- It is all good and important for our community and its people to thrive. However, my passion is walking the trails, particularly through the woods. I would love to have more trails to walk and Cushman extended.
- Just keep the beauty & keep them maintained.
- Just maintain what we have. And no more stupid too small roundabouts
- Keep it safe & clean
- Keep landscaping manicured, facilities clean, view impeding growth pruned
- Keep low impact parks low impact and costs low
- Keep the Cushman Trail clear and expand it past the hospital. Keep the trails and off leash area clear.
- Keep the existing parks & rec areas clean and well maintained
- Keep them clean & safe
- Keep them maintained
- Keep them safe and clean. No homeless people, no drugs or alcohol paraphernalia, no exploiting the beaches for gooney ducks or clamming - a lot of people are doing this at Kopachuck and nothing gets done about it. All talk, no action!
- Large waterfront park with large walking area (10 miles at least)
- Leave large areas of natural habitat for remaining wildlife. These areas do not require continued development or maintenance.
- Lengthen Cushman trail and connect to other trail networks
- Let volunteers who are willing to make improvements or maintain
- Lights, restrooms & drinking water, pet areas
- Like the ones we have fine
- Listen to everyone, not just well organized groups who make the loudest noises.
- Longer connected soft-surface trails, or just other long trails besides Cushman, could be a combo of soft-surface and sidewalk

- Longer hiking trails
- maintain & develop trails
- Maintain current park areas!
- Maintain current parks and trails
- Maintain current parks!
- Maintain existing and keep them clean
- Maintain existing parks better
- Maintain existing parks; example, this year I have seen the lack of lawn maintenance even at the Civic Center, not to mention Grandview Forest Park
- Maintain or spend more to repair 1. & 3. 2. Maintain for satisfactory usability.
 1. The two viewing platforms either die of Wagner Way have trees grown against the structures and moving them in the wind. Without removing the trees, the platforms will be damaged.
 2. All three viewing platforms in Tallman Park need brush cleared to enable viewing.
 3. The culvert(s) draining the ponds in Tallman Park needs cleared of brush and trash because the ponds overflow the walkways during the rainy season.
- Maintain our precious, irreplaceable outdoor spaces
- Maintain what we have and expand where possible - open space is critical as Gig Harbor grows
- Maintain what you have
- Maintenance of parks
- Make more
- Make sure all understand what is available
- Make sure open space, natural areas survive with so much development
- Make them accessible by sidewalks from neighborhoods. To Veterans Memorial Park there are no sidewalks that go to the neighborhoods, only towards the businesses. The streets that connect to neighborhoods are lacking safe walkways for children, and no crosswalks.
- Make them free of car prowls, homeless, beggars
- Make them more accessible for disabled people.
- Mobile large print bookmobile for seniors
- more
- More access to waterfront
- More and increased safety for pedestrian and bicycle capacity along Harborview drive all the way around the bay, if possible
- More available water bottle fillers and dog fountains. Don't turn them off due to covid, let people make their own choice
- More beach access, community swimming
- More benches to sit on
- More biking trails and more bike lanes on public roads
- More community areas that are safe & comfortable for seniors and/or disabled adults and children.
- More community events
- More community events
- More dirt/gravel trails and expand the Cushman trail.
- More dog poop bags & garbage cans on Cushman Trail
- More doggy poop bag stations and trash cans for the full bags. The amount of dog poop & bags of dog poop left on trails, and in parks, especially the Cushman Trail is pretty disgusting
- More events in parks (outdoor theater?, "Shakespeare in the park")

- More hikes
- More land kept out of development - it will only get MORE expensive, so buy when possible, then develop as funds & time allow.
- More lengthy walking trails.
- More lit fields - less potholes in the grass.
- More maintenance on overgrown plants like blackberries, groundkeeping in general.
- More nature walking trails.
- More off leash dog areas
- More off road biking and safe bike lanes
- More open space
- More parks/natural spaces and less cutting down of trees for housing
- More picnic tables in waterside parks (Edson, Austin & Donkey Creek parks). Add some also to the forest next to the City Center.
- More places to allow dogs off leash.
- More places to walk/hike/bike.
- More playgrounds with equipment for younger children.
- More porte-potty
- More restrooms, better sidewalks on busy roads (Burnham, Harborview)
- More running paths
- More soccer fields that are turf fields. It rains a lot here so too muddy in the grass.
- More sports facilities - softball, tennis, basketball, etc.
- More trash cans and dog poop bags
- More trash cans. Off-leash dogs areas.
- More walking trails
- More walking trails in nature like the ones in Harbor Hill.
- More waterfront park options. Gig Harbor has become quite crowded, we need more options for waterfront access without being overcrowded.
- Move forward on the sports complex!
- Move forward with the Sports Complex that is being planned with the YMCA.
- Move some of these summer events out of downtown and into other less concentrated areas.
- Near hiking, biking trails
- Nice spray park for children.
- No cutting of trees. Plant more trees (indigenous) and protect existing old growth forest areas. With all the residential and commercial development our park and natural areas are where we go to get our "tree fix"
- No idea
- No opinion
- Not sure, doing a good job now.
- Not to clear cut trees; Keep natural habitat for wildlife; garbage can for litter
- Not yet familiar
- Notify residents of all that is offered.
- Off leash dog park
- Off-leash dog park
- Organize the kayak club better. They overrun the park and dock, use all available street parking, block access to the dock

and park, stop traffic on Harborview to load and unload. And, the coach boats create boat wake in the bay, totally violating the 'no wake' zone regulation. Why can the kayak club exceed the harbor speed limit of 5mph and create wake, while other boats are expected to operate properly?

- Parking is largest issue, but if there were more sidewalks and bike paths this may not be an issue
- Parking lot safety
- Parking, parking, parking in downtown area! Senior Center!
- Personally, we don't use the parks too much. But for those with children and future generation, I think everything possible to make the parks a "go to" destination would be great.
- Pickle & Tennis courts
- Pickle ball courts, pickle ball courts, and more senior oriented activities. Senior Center!
- Please bring back camping at Kopachuck State Park
- Please continue to improve on Gig Harbor's walking and biking connections. With the possible future connection of downtown to the Cushman Trail, please also consider widening Gig Harbor's downtown sidewalks to allow for various walking loops. Downtown sidewalks are very narrow and become extremely crowded. Thank you to staff who were involved in the Jerisich Park improvements and the new Ancich park - both were very well done.
- Please expand Randall Drive boat launch on North harbor. Dock is too short to use at a full low tide. It needs to be lengthened by one section. Also a second dock on the left would improve greatly improve much needed capacity.
- Please keep the trails and parking areas safe and guard against crimes such as break-ins of cars and personal safety for walkers, and no homeless camps
- Please pick up (rake up) miscellaneous tree branches, rocks and trash people leave in the dirt/picnic table areas of Crescent Creek Park more often. Thank you for the plastic doggy poop pick-up bags!
- Promote them all more
- Protect those who use
- Provide better, more precise information on where parks are located and how to access them. I've found the information available to be incomplete.
- Provide level trails in natural areas that are handicapped accessible, with adequate adjacent parking and interpretive signage!
- Provide more trees/native vegetation, not overly "developed"
- Provide parking to waterfront parks
- Provide parking. Stop allowing developments & commercial development to build right up to the road to not allow expansion of road infrastructure. Absolutely ridiculous here how you have allowed this. Ignorant planning.
- Provide public pools.
- Public golf driving range
- public swimming pool
- Public Swimming pool
- Pull weeds
- Purchase and develop walking trail / park area west of Burnham Drive along Donkey Creek Watershed Area (North Creek)
- Purchase the remaining natural and view-shed areas for the public use. Waterfront, streams, woodland, ponds, mountain view as examples.
- Put in more of them
- Put sidewalks or paved trails all the way down Burnham Rd to connect to Harborview and the waterfront.
- Quit cutting down our trees and making remaining open spaces into hard surfaces. Do something good for the environment!
- Regular maintenance
- Remove invasive plants and have an aggressive native plant re-establishment program.

- Renovate old Masonic lodge bringing it back to a similar resemblance to its original beauty and continue to lease to the Gig Harbor Cooperative Preschool. Also having a splash park that is not close to a busy road with ample parking.
- Replace picnic tables at Crescent Park and add a few more.
- replace the coordinator for the Wilkerson Family Farm. The current one is not up to the job. It took 6 months for her to reply to my emails asking for a plot. Her record keeping is terrible and she can't keep track of which plots are taken and which are free. Her handouts contradict what she says verbally regarding garden rules. She is ineffective at procuring things like sawdust and manure. My experience has been terrible.
- Restrict growth!
- Safe biking & hiking trails. Place to play tennis or pickle ball indoors - walking trail inside.
- Safer parking - reduce break-ins (car)
- Safety at parking areas (car prowlers)
- Safety for women
- Safety would be a factor
- Security. Please keep gig harbor and its amenities safe.
- Shaw Park
- Sidewalks and bike lanes along Burnham
- Soccer fields - lighted!
- Soccer fields, baseball fields, family play areas
- Spend less on things/directors which/who are overpaid. You just want the rich/young to survive. Oh, well.
- splash pads and playground structures for older children - I have been saying this for years on your surveys - plus need more tennis courts
- Splash park for kids please!!
- Spray park, water plan area and/or community outdoor swimming pool
- Stop building housing tracks. Their going to ruin this nice city. The streets just are not made for all these cars.
- Stop building housing units and create more natural space.
- Stop clear-cutting of trees for any future developments - enough! No more!
- Stop developing all the green land. Maintain / keep forested areas w/parks.
- Stop the ridiculously gross residential development - it will ultimately change this community into someplace those of us loved into a place we no longer recognize - I have been here my whole life and hope to leave in the next 10 years.
- Support better maintenance
- Support programs for kids such as GHYC Junior Sale, Kayak Program
- Tell people where they are and how to get there - directions not just an address. And PARKING! Newspapers - don't rely on the computers so much. Big mistake.
- The city is doing a great job - we have a nice collection of beautiful parks! Thank you!
- The City of Gig Harbor appears to have little if any interest in seniors. To wit the fact that this editor center has had such a hard time getting going. It would be great if the city could partner with the center to create opportunities for the elderly to visit Ancich Park or just visit the parks & waterfront. Like Senior Day at the park.
- The Cushman Trail from No. Harborview / Burnham Dr.
- The golf driving range shut down and was to be replaced with a recreational center. We badly need this now!! Also better little league fields.
- The parks need a splash pad or public pool.
- The YMCA is NOT a community pool. Build one and offer swimming to residents, recreational, youth, diving. Y has insufficient capacity for Gig Harbor.
- Things seem maintained well. I wish they would put money in roads. Put Donkey Creek Bridge back to 2 way traffic, so Dustin St. & Harborview have 2, 2 way streets again, instead of 2 one way streets. Duh. There's more traffic now and it's

getting worse! Plus all the time and gas adds up over time.

- Too new to the area to know.
- Try to maintain and/or extend the amount of green space in Gig Harbor. We moved here for the remote look and feel which seems to be going away in the future.
- Upgrade existing parks and trails
- Use our resources more wisely. Stop approving development and taking nature away for parking lots and roads.
- We are always impressed w/GH parks we could always use more playgrounds & trails
- We desperately need another indoor pool!!!!
- We have enough. Stop spending on non-essential items. We would like to see a performing arts building.
- We have lived here one year and came from WI. It has been disappointing as we can't ride our bikes much here. There are (?) roads with no good shoulder and no bike lane to connect. Gig Harbor is beautiful & thankful for all!! We have 2 grandchildren so we use the parks.
- We need lighted sports complex with fields, bathrooms and parking. Also a community pool like Fircrest!
- We need more sports fields for the kids
- We're 96 but would vote funds for improving the parks because our young generation needs them.
- Would love an aquatics center!
- You've done a great job - can't think of how to do better - facilities are clean, well-maintained, and bountiful.

Online

- 2 or 3 additional beach volleyball courts.
- A city run pool! Our kids safety depends on it.
- A community pool, and build up our current parks to be something special, not just a metal play structure
- A community pool, for all ages!!
- a dog park closer to the downtown area
- A public pool/aquatic center; I fully support Swim Safe Gig Harbor.
- A pump track!!!
- A splash park would be great
- A strong swimmer!!
- Access to kayaking for older adults
- Acquire & develop more waterfront property to allow for kayak, beach, & swimming access.
- Acquire additional lands for conservation of trees, wildlife habitat and open space to preserve the natural beauty of our community.
- Acquire and develop The Village property as a Pump Park. As a senior citizen, I feel children need more varied community recreation sites.
- Acquire as much land in the city as possible. As the city grows, our opportunity to save areas in their natural state and community access to the water diminish.
- Acquire land to create more park and open access spaces and keep commercial development down
- Acquire more natural areas that are publicly accessible. Expand trail access to trails beginning and ending in gated communities. Priority on preserving natural spaces with limited development. Little to no emphasis on additional sports courts or fields. Improve the safety and wellbeing of gig harbor by actively limiting big gatherings during covid and actually enforcing mask mandates.
- Acquire more natural areas.
- Acquire more park/natural areas
- Acquire more parklands

- Acquire more undeveloped land to help minimize other development.
- Add a community pool facility
- Add a community swimming pool
- Add a dog beach so dogs can go swimming in a safe place. And more marketing materials because I don't know what parks are available around here.
- Add a public or multiple public pools!!
- Add a pump track
- Add a spray park
- Add additional sand volleyball courts, and maintain the current ones. Lights would also be a benefit, as well as the ability to reserve the sand courts.
- Add additional soft surface trails or connection points between existing trails
- Add an off leash dog gated dog park on the north side of gig harbor. Several people use the smaller fields in the harbor hill area but others would prefer a safer gated area in case dogs run off on to the main road (borgen and harbor hill drive).
- Add an outdoor swimming pool!
- Add bathrooms at mile 0 Cushman trail
- Add bike lanes to streets and sidewalks
- Add boat launches
- Add Bocce Ball Courts in Shaw Park.
- Add covered areas since it rains so much
- Add covered seating areas at sports areas and more picnic tables
- Add dedicated pickleball courts
- Add lights to existing parks to accommodate evening usage of existing spaces.
- Add lit turf and/or grass fields for soccer and other sports
- Add lit turf soccer, football and lacrosse fields.
- Add more
- Add more green spaces and trees
- Add more hiking trails
- Add more land
- Add more lit sports field areas ASAP! There is a huge need.
- Add more lit sports fields
- Add more lit turf space for our youth to play sports year-round. One of the only cities state-wide without any city developed lit, turf space.
- add more opportunities for families with children to enjoy the parks
- Add more Pickleball courts
- Add more sand volleyball courts
- Add more sand volleyball courts like we were promised. Replace the lines and nets to the current courts that the city workers ripped apart when covid hit. Provide a grass volleyball set up.
- Add more sand volleyball courts. It is best as a game of twos or fours, and there are two courts for all of gig harbor and surrounding areas. Yesterday there were probably close to 20 young adults waiting to play, and trying to shuffle so everyone has an opportunity.
- add more sports fields and improve existing fields. our little league fields are in poor condition relative to other areas (puyallup, univ place, etc.)
- Add more trails and walkways
- Add more trails to connect different areas of town and more kid friendly areas not just boat socks and space. We need more

- play parks, splash pads, bike trails. Gig Harbor is not very kid friendly.
- add more trash receptacles
 - Add more Volleyball courts or a swing dance hall with lots of parking and live bands.
 - Add pedestrian/bike safe crossings over highway 16, to improve connectivity to parks and trails for all citizens.
 - Add playground
 - Add rest rooms and ester fountains
 - Add sand volleyball courts and water facilities for kids(pool and or splash parks)
 - Add Sand Volleyball Courts in existing Parks
 - Add seating and garbage service.
 - add trails and walking areas
 - Add turf fields for sports
 - Add turf lit fields. The fields will bring people to gig harbor and be a huge benefit to our youth.
 - Add two more volleyball courts. It's a great place for the youth and people to enjoy.
 - Addition to skatepark and or pumptrack , jump park
 - Additional mild grade bike paths.
 - Additional parking at water front parks.
 - Additional parks and side walks would also be an added bonus!
 - Additional public water access for personal watercraft (kayaks).
 - Additional sand volleyball courts with adequate parking.
 - Additional Soccer fields/ facility
 - additional tennis courts
 - Adequate lighting.
 - allow for responsible alcohol consumptions on some parks
 - Also more playground equipment and picnic tables/shelter areas
 - Also, stop the developers from buying the land & putting in high density housing developments.
 - An outdoor Pool!!!!!! Please. There is so much water, and very few places for kids to swim safely. I'd also love to see some spray parks, and would to connect neighborhoods to parks by sidewalks. For example, please consider completing the sidewalk on Peacock Hill road, so we can safely walk to school, Shaw Park, and even to the Harbor.
 - Anything to keep them safe!! It is concerning to use trails as a woman when it does not feel safe to do so.
 - Apart from acquiring more lands
 - Aquatic center with competition pools for swim education, water sport teams (swim, water polo, dive, synchronized swimming) and recreational swimming for families that can be used year round (indoor and outdoor options)
 - Aquatic center. The children who are not able to access swimming lessons in the area causes a safety concern and I'd love to see that addressed in "The Maritime City"
 - Aquatic facilities
 - aquire more forested land. for trails
 - Bathroom facilities
 - Begin work on the old driving range area.
 - Better access
 - better access to waterfront for foot traffic and boat ramps
 - better bike lanes to the Cushman Trail and extend the trail.
 - Better bike trails and bike lanes
 - Better maintenance

- Better maintenance of current properties. Things are looking over used and neglected. Example, boat launch, end of Harborview old ferry site.
- Better maintenance of parks we already have.
- Better parking availability
- Bike lanes and/or more paved running/biking trails. We really need a splash pad for the kids, the little one down town doesn't cut it.
- BMX park
- Build a bike pump track!!!! Please!!!!
- Build a community aquatics center
- Build a community swim center! Kids need a place to learn how to swim in our city surrounded by water. Adults need a pool for exercise and community.
- Build a community swimming pool for kids to take swim lessons. It's so hard to find lessons around here and being surrounded by water, it's so important to make sure our little ones have the knowledge of what to do in and around water.
- Build a connection trail between Sehmel park and Cushman trail, or some safer way to bike or
- Build a public aquatic center
- Build a public aquatic center
- Build a public storage for kayaks, canoes; build a connecting trail between Cushman and the waterfront
- Build a Senior Center. The city and Pen Met Parks put a lot of resources toward activities of ages 1-50. After that there is little desire to provide much needed resources to Seniors.
- Build a spray park
- Build addition turf, lit fields.
- Build additional sand volleyball courts
- Build additional volleyball courts
- Build an aquatics center with outdoor/indoor swimming opportunities
- Build at least 2 additional beach volleyball courts at Crescent Creek Park.
- Build dedicated pickleball courts
- Build lit turf fields so our youth can play sports, in winter when it's dark and the weather does allow non turfed fields to be used. It's not safe! Ask the youth clubs what their growth looks like. The city is so far behind in supporting the sports needs of gig harbor. It's sad. I've lived here newly 50 years.
- Build more pickleball courts
- Build more soccer fields with turf and lighting. Tournaments generate a lot of tourist business and would also stimulate local economy
- Build more soccer/football fields for kids to play sports.
- Build new beach volleyball courts at Crescent Creek
- Build or partner as needed a community pool so kids can safely learn to swim in our maritime community. If not that, then more sport and recreation opportunities for kids.
- Build Pickleball courts
- Build pickleball courts.
- Build the new 17 acre fields/park with the ymca
- BUILD THE VOLLEYBALL COURTS YOU SAID YOU WOULD BUILD IN 2017
- Buy more areas, buy more waterfront access, create more beautiful "photo op" scenic areas, involve community volunteers to assist in getting the word out about the existing (tiny and hidden) parks, create a "lookout park" with great views, publish trails, routes, expected difficulty and time to complete, with photos and possible wildlife to look for. Encourage binoculars and sightings of high nests in some of our forest trees, plant butterfly habitat and pollinator friendly blooms. Tell people about the pelican family that is now local and the plight of the larger jellyfish, how to improve the water quality, what to look

for when lawn treatment is purchased and how to use the minimum not the maximum amount. Bring the public interest level up by involving the public and educating them not only on the parks, but how to preserve our parks and wildlife because we are a waterfront community and can take pride in our knowledge and preservation of the waters that surround us.

- Child playground equipment
- City pool. The wait list for swimming lessons in Gig Harbor is over 300 people long.
- clean and maintain existing parks and install more picnic tables
- Clean bathrooms for men and women
- Clean up Shaw park and develop the adjacent property
- Clean up the north end of Crescent Creek Park ie the volley ball and bike park areas. I feel like that 'end' of the city is the neglected sister of the parks
- Clear wild growth
- Community access to kayak storage at Ancich park
- Community pool
- Community pool
- Community pools in the area. We are surrounded by water and have no way to teach our daughter how to swim in a pool setting!! It's important to me that my child have access to a pool during the cooler months so that she can become
- Community swimming pool
- Complete and extend the Cushman trail
- Complete the kayak dock at Ancich Waterfront park
- Complete the plans they already have in place. Don't take on new projects. Need to have traffic/road infrastructure in place to go along with this. Parking is a major issue. When city event parking is flowing into neighborhoods, this is a problem.
- Comprehensive signage, advertising - I found a new to me park just last week.
- Connect and expand Cushman trail
- Connect parks with safe bike lanes.
- Connect the Cushman Trail so that it doesn't run on city streets
- Connect the trails so it is more possible to walk and bike between areas in Gig Harbor. Cushman to downtown and Finholms, sidewalk or trail along Burnham and two foot and bike bridges crossing Hwy 16.
- Consider how businesses influence park experiences. For example, don't locate loud (taprooms) next to quite (park) areas.
- Continue doing what is being done
- Continue to acquire and maintain more wooded by properties.
- Continue to maintain or create more walking trails.
- Continue to maintain trails and cut back foliage when needed.
- Convert tennis courts at Sehmel to dedicated pickleball courts.
- Covered field/workout space
- Covered tennis and pickel ball courts!
- Create a sports complex for soccer and other youth sports.
- Create more soccer fields & a sports complex! It will be good for commerce as well.
- Create more uses enjoyed by families with young children.
- Create more walking and cycling trails
- Create more walking paths. It's the least expensive form of recreation!
- Create the lighted outdoor fields area with the YMCA
- Cushman trail to harbor links
- Decrease crime. Make Gig Harbor feel safe like it did in the old days before the developments. It's just not safe to go outside and definitely not to bring children outside!

- Dedicated lighted fields ASAP! For soccer.
- Dedicated pickleball courts
- Dedicated pickleball courts. Please!
- Dedicated pickleball courts. Not one in GH! The fastest growing sport in the US. 700+ members and we fill up all the courts on Saturdays and have to wait in line to play. According to the Sport and Fitness Industry Association (SFIA), pickleball participation grew by a 21.3% last year alone. Gig Harbor keeps putting off and dodging the issue and trying to placate homeowners and players with promises and "shared" undedicated courts.
- Designated pickleball courts
- Develop aquatic center at peninsula gardens facility!
- Develop city wide set of trails or paths for pedestrians and cyclists
- Develop outdoor auditorium, add volleyball courts
- Develop playground, picnicking, connections to existing trails in and from Shaw Park which is to say, make a useful and attractive family-friendly park out of Shaw Park.
- Develop Shaw Park
- Develop something downtown for seniors. I've raised my family of 5 children with minimal recreation but I'm happy kids now will have these opportunities. However you are forgetting the senior population. Most I'll small towns in Kitsap Co have a place in town that is even on the bus route, where older people can gather. Any possibilities?
- develop Soundview Forrest park
- develop the city-owned open spaces or sell them.
- Develop the harbor family park the way it was promoted... To be like sehmel park.
- Develop the Peninsula Gardens property to be a public aquatic center for gig harbor. We desperately need one.
- Develop the sports and rec area near the Y
- Develop trails and bike paths that don't hit the highway. The noise and pollution is a negative, for sure.
- Develop more, acquire more land.
- Disc golf course
- Do a better job of maintaining the existing parks
- Do all plantings with care and with plans for the long term care of the plantings.
- Do not concentrate on just boys sports, also concentrate on the elderly type sports particularly in the winter. Indoor tennis/pickle ball would be great
- Dog park for small and large dogs
- Don't charge so much to use the space for nonprofit organizations. Keep them up.
- Don't know
- Eliminate the use of toxic pesticides (namely Round Up) in our parks and fields.
- Encourage Litter Pick up and provide garbage cans
- enforce existing rules to avoid excess wear and tear/damage
- enforce rules
- Enforce, with tickets, dog owners complying with rules to keep their dogs leashes and pick up dog poop.
- Ensure restrooms consistently maintained
- ensure safety, including removing homeless camping in these areas and/or adjacent areas.
- Ensure these areas are safe. That means no homeless campers/living rough, more lighting and visible police presence.
- Ensure they are kept clean and well maintained.
- Expand & preserve natural areas as much as possible to balance ongoing urban growth.
- Expand # of park areas & fewer developments. We don't have the infrastructure to handle the utility, foot or vehicle traffic
- Expand and create safe bicycle lanes

- Expand and maintain natural and paved trail system
- Expand athletic facilities at Crescent Creek Park to include
- Expand bike trails to include bike lanes on city streets.
- Expand or add an addition off-leash dog park preferably on the water for dogs to swim.
- Expand paved trails
- Expand safe biking trails and more pickleball courts.
- Expand the Cushman trail and put in bathrooms.
- Expand the Cushman trail. It is mainly a one direction and turn around trail that is not seeing its potential use. Create designated extensions using existing sidewalks or side of roads markings with curb barriers. AND create an access from the trail to downtown. Ideally along side the sewage treatment plant. I think that alone would have a huge impact on family use from the north and south.
- Expand viewing areas in downtown harbor area where most people walk and run. Expanding a safe bike lane downtown gig Harbor that even little kids could use would be really nice as well. Extend up Burnham.
- expand walking trails particularly along waterfront, even consider eliminating car traffic and expanding width of walkways! Would also love to see a park closer to Artondale and maybe a walkway that would connect our neighborhood better!
- Explore accessibility status of trails and parks. Consider exploring new methods of harder-scape trails to coexist with soft trails... Such as certain portions being accessible to those using mobility aids, e.g. walkers, walking canes
- Extend Cushman Trail, provide walking and bike overpasses at busy intersections.
- Finish Cushman Trail to Baker Way
- Finish Cushman trail.
- Finish Paddlers Dock and Homeport
- Fix maintenance at Shaw Park
- Fix the play area up in skate park and clean up the skate park
- fix the tennis court at crescent creek park!
- Fix up Shaw Park
- focus on safety
- get more trails for running and biking in forestlands
- Get rid of all Ivy and blackberries
- Get rid of the Scotch Broom shrub. It's invasive and is killing all the other natural plants.
- Gig Harbor DESPERATELY needs a public aquatic center!! Our families cannot find places to take our children to learn how to swim!! Please consider supporting the Swim Safe Gig Harbor campaign for a public aquatic facility for our Maritime City!
- Gig Harbor desperately needs an aquatic center for our community and families. Our kids desperately need a place to swim and learn
- Gig Harbor is growing fast and growth is crowding out open spaces and waterfront access. Growth is inevitable but makes requiring developers to retain open spaces, install lighted walking paths, community gardens/gathering spaces, etc all the more important. The City similarly has to invest in enhancing its existing and planned parks to meet the needs of increasing numbers of community stakeholders in our parks.
- Gig Harbor is in desperate need of an aquatic facility. Our family would greatly appreciate it. Please consider the efforts of Swim Safe Gig Harbor. Thank you!!
- Gig Harbor needs a city pool and splash pad.
- Give up on skateboarders. They suck the life out of every single skate park on the planet. I have no idea why it happens BUT they attract the absolute worse, self centered, disrespectful, entitled little jerks on the planet.
- Give us a public swimming pool and a Performing Arts Center
- Goose poop at Skansie park is gross and my kids step in it.
- Handicapped access to the beaches

- Handicapped Parking
- Have a large outdoor covered playspace for the rainy season.
- Have a real harbor patrol. Out Thursday through Sunday. Not on a Tuesday or Wednesday afternoon.
- Have more access to various sport fields and maintain the parks, trails and fields
- Have more soccer fields that are accessible to kids (not locked off as some schools are or constantly occupied by Harbor Soccer).
- have more water access
- Have OPG provide funding from their bond to redo Shae Park. Other than the seating area with instruments at Borgen, it is a useless eyesore and insults the City.
- Have our law enforcement provide a little more surveillance to protect users from those who do not belong here and those who prey upon users and their vehicles.
- Have some parks where animals are not allowed
- Have sponsored walks or fee runs to pay for park maintenance.
- Help for strollers!
- Honestly I feel as though they are so beautiful already. Maybe just stick with maintaining them and possible adding a few new things along the way
- I appreciate the positive efforts of City Staff to work with non-profit Friends of Harbor Hill Environmental Sanctuary (FHHES) to refine the FHHES design and funding of creating this new ADA accessible public park. This project is an excellent example of (1) private residents investing in public parks that benefit extended community, (2) exceptionally positive results of partnering with multiple community organizations, and (3) strong environmental education potential. Please look for ways to help make this challenging project happen.
- I can only answer this one way. "Water!" Grandkids want ponds, creeks, waterfalls, beach etc... anything where they can get wet. At NW Trek they were excited to see animals but had the greatest time in the kids area with man made water/streams. They love the water feature at Jeresich. And we can't keep them out of the water at Eddon Park.
- i don't know
- I love the sand volley ball courts and would love to see them better taken care of, or even some more around town.
- I love the water bottle filling stations. I can walk further because of both these & well cared for restrooms. Thank you
- I request the city purchase the old quarry on 112th Street (the Walt Smith property) and turn it into a park. There are very few parks on the north end of Gig Harbor and this property is ideal for a park; since the quarry stopped operating lots of wild animals have moved into the area. It is an unattractive piece of land for residential development but would be a wonderful park (and could include historical information about its mining history). The area is partially bordered by a wetlands which again make it a good location for a park.
- I think the city and PenMet are doing a fine job! I don't see any need for additional spaces/parks
- I think the city should focus on developing the land next to the YMCA for all surface play fields. It would be a huge asset to our community. Our community could start to have enough field space for all the recreational teams and it would allow for tournaments that would be an income stream for the entire community
- I would encourage more boat launch/trailer parking areas. We need a marine refueling option (gas for boats). City beach access would be a bonus.
- I would like a public pool. Fircrest has a great example of what I'm envisioning.
- I would only support basketball courts. We would not use anything else.
- I'd love to see things like regularly scheduled Tai Chi in the Park at one of the waterfront or downtown parks. I would like more walking trails for light hiking as well.
- I'd like the city to consider developing an indoor swimming facility with services that would include: all season water park, lap swimming, swimming lessons, and water polo.
- I'd love to see a playground somewhere in the walkable harbor. It'd be great to be able to walk, enjoy the waterfront businesses, and have a place to let kids play without having to drive to a new location.
- IDK

- Implement a community swimming pool with both indoor-outdoor usage for swim teams and rec classes
- Implement safety measures for parking areas
- Improve access for SUP board users. Many have inflatable boards, so we need either parking close to the water OR battery access and air compressors installed close to the water for launching. They are too heavy to carry far!
- Improve and expand existing small parks in residential areas
- Improve clean up crews
- Improve facilities for seniors. Build dedicated pickleball courts.
- Improve maintenance of existing parks.
- Improve maintenance on Shaw park. Trees are dying and weeds are growing.
- Improve safe parking for the Cushman Trail
- Improve Shaw Park
- Improve Shaw Park
- Improve Shaw Park.
- Improve the Madona golf course which is absolute ugly wet conditions during a very hot dry spring and summer. This course could be as popular and profitable as the publicly owned Gold Mountain course in Bremerton. It's appalling to see how the current owners have neglected this golf course.
- Improve the trees and development of Shaw Park.....A lot of us use it in the area and it really NEEDS HELP!!!!
- Improved water access!!!!
- Improving parking would be a huge help. Concern over finding parking that's easy to use (unloading and reloading a stroller and a baby) deters me from going to parks.
- Incorporate small trailer and personal boat launch and parking in planning and upgrades.
- Increase accessibility.
- Increase amount of open space parks
- increase awareness of what is going on at various areas
- increase number of trails.
- Increase sports fields
- Increase support for community garden
- Increase the number of signs at the start of trails and along the trail paths. My family stopped using the trails in the local parks because there were no signs and we were concerned about getting lost or being on a hike that was too long for young children.
- Increase the natural areas that you own. Breaks my heart seeing so many beautiful forests being cleared for neighborhoods (ie Skansie/Hunt. Hunt/38th).
- Increase waterfront access, including boat launches and parking.
- Indoor and soccer/sport center/fields. Lighted practice facilities without geese poop.
- Indoor facilities like a track
- Indoor tennis courts
- Install a Pump track!
- install a splashpad
- Install and maintain a dog waste disposal station at the entrance to Shaw Park. Lots of people either don't pick up after their dogs or just leave full baggies in the park or along Borgen Blvd.
- Install cameras so parked cars are safe from vandalism
- Install HD security cams at all hard surface trailhead parking areas to be able to ID and track individuals who steal and vandalize there.
- install more sidewalks near Crescent Creek Park and do something to slow down traffic on Vernhardson

- Install sidewalks along city roads
- Install soccer pitches as this is an up and coming sport. It's the most popular sport in the world. You need to keep up with the demand. There's not enough field space for Harbor Soccer Club to fit all of their teams on
- Install the paddle dock :)
- Interpretive signage about nature & wildlife
- It offers swim lessons and is cheaper for locals.
- Just more options or improvements to existing areas I accommodate more people. Veterans memorial is a good example. Hardly used for anything other than sports practices, but with the new playstructure, there are always people there. Would love to see something like a 2nd playground at sehmel, and a playground in the heart of the harbor would be amazing.
- Keep areas clean, weed.
- Keep doing the great job you're doing on maintenance and acquisitions.
- Keep expanding walking trails.
- Keep gig harbor as natural as possible! Acquire additional forest or park land to keep gig harbor green!
- keep or add to the natural forest areas.
- Keep or expand parks with trees and paths. Please no more ball fields and playgrounds. We need forests, please.
- Keep the cedar trees cut so we can see the harbor when parked. The cedar trees have grown so much that they obstruct the view thereby ruining the purpose of the park.
- Keep the existing ones well maintained while purchasing more land for parks.
- Keep the existing trails in good condition, well trimmed and accessible.
- Keep the parking lots safe from theft. Cameras.
- Keep the parks and trails as beautiful ly maintained as they currently are, including the trails and sports fields. Also make sure there is safe, available parking.
- Keep the skatepark clean
- Keep them beautiful, secure and safe and free of loitering or being a place of unsavory behavior. Do not allow a Seattle/Portland situation to occur
- Keep them clean.
- Keep them maintained
- Keep them safe
- Keep them safe, clean, and as natural as possible.
- Keep them well maintained! Clean and usable! Don't cancel events for Covid!
- Keep trash picked up and empty barrels frequently. Make sure dog poop bags are available
- Keep up the good work you are doing so our community stays beautiful and usable.
- Keep up the maintenance!
- Leave Harbor Family alone DO NOT DEVELOP IT!!!
- Less concrete/pavement..more natural areas.
- Less money invested in sports fields!!!
- Let volunteers or organizations "adopt a park" to assist in its upkeep
- Level bike trails
- Lighted fields
- Lighted turf fields for soccer, lacrosse and football
- Lighting for soccer, lacrosse and baseball fields.
- Lights for sports fields.
- Lights on fields for sports like soccer, football and lacrosse. More indoor sport activities.

- Lock the restrooms from dusk to Dawn. And police them.
- Longer bike trails like Cushman trail
- Lower our taxes
- Maintain and develop what currently exists.
- Maintain current spending level while completing existing projects. Develop masterplan for GH
- maintain existing parks and provide more paved ADA assessible trails through the beautiful wooded areas so these beautiful areas are not just for able bodied people. Scooter and wheelchair accessible wooded trails
- Maintain existing properties for the long run before overextending with new offerings.
- Maintain hiking trails
- Maintain Shaw Park.
- Maintain Shaw Park. It was developed a few years ago but has never been maintained. It is a disaster.
- Maintain the current parks, particularly Shaw park.
- Maintain the parks first.
- Maintain the restroom facilities. Grandview - civic center has been out of service for eight weeks!
- Maintain them
- Maintain them better
- maintain them in good condition. too many dead trees in Shaw Park
- Maintain them properly
- Maintain trails and landscaping
- Maintain trees in Shaw Park
- Maintain what already exists
- Maintenance
- Maintenance
- Maintenance of existing parks.
- Make a covered park/playground for kids of a variety of ages for those long rainy months. There is basically nowhere to take kids to burn energy in those months.
- Make a paved bike trail loop that is a few miles long and kid-friendly (mostly flat grade). Bonus if it has a variety of sights along the way, like forest, water, fields, etc.
- Make decisions with more attention to new residents...not old-time, power-broker fishing families.
- Make developers add more trails thru developments
- Make kid friendly, have play structures, make parking available, more play fields
- Make more parks in general to ease crowding of existing parks, more rugged trails and not paved sidewalk trails, more fields that are NOT used by organized sports to families can use for own enjoyment as well.
- Make parking lots safer
- Make parking safe around trail heads and in park parking lots
- Make sure current parks are clean, well-maintained and safe.
- Make sure they are safe with good security & protected from the intrusion of drug addicts, and the homeless population with mental disorders.
- make sure they do not become homeless camps
- Make the south side of harbor waterfront more for public use and shopping, no residential.
- make them safe for all people.
- Make them safer
- Make them safer for women (like walking alone in the Cushman trail)

- Make waterfront locations available to the public. People come to Gig Harbor to see the Tacoma Narrows Bridge and the water. Gig Harbor needs access to waterfront for locals and visitors. We have a boat moored in Gig Harbor and we are often asked by passing boats how they can access downtown as they are looking for public dock access. The public dock we have is great but often full when the weather is good. Another options for visitors to tie up (maybe a dock just for dinghies for those that dropped anchor in the bay) would be nice if the city could find the space.
- Mark trails and trail junctions better.
- More & covered pickleball courts to play all year.
- More access to the water
- More accessible playgrounds for young and old children. Safe parking is also needed
- more accessible waterfront parks with water access or an actual water park/splash pad
- More athletic fields, parks and spraygrounds
- More available basketball courts
- More baseball/softball fields! Maybe batting cages added!
- More bathrooms
- more beach volleyball courts
- More beach volleyball courts
- More beaches and waterfront spaces if possible, please, and kayak storage would be wonderful.
- more benches
- More bike lanes
- More bike paths and mixed use trails!
- More bike trails
- More bike trails that families can ride on. Especially a safe way to get to the harbor. It's extremely unsafe riding in the harbor.
- More biking trail opportunities
- More community-based events. Amateur music/singing night. Meet and greet functions. Outdoor classes (work-out, yoga, kayaking, paddle-boarding. Organized bocce, croquet, basketball, tennis, volleyball nights.
- More designated pickleball courts. Repair Crescent court surface. Restripe existing tennis courts to accommodate pickleball courts. Dire need of indoor (WINTER) play courts!!
- More dog parks
- More family features. (add playground equipment to existing parks, create a nice spraypad, community pool)
- More fields doe lacrosse, soccer
- More lighted and artificial turf sports fields.
- More lighted areas. Sidewalks to connect.
- More lighted fields for play! There are not enough opportunities for lighted field space and it gets dark early in the Fall/Winter. Kids need to be outside!
- More lighted fields with playgrounds near.
- More lighted soccer fields
- More lighted sports fields (soccer, football, baseball) that are open to the community. Get moving on the Gig Harbor Sports Complex by the YMCA.
- More lighted turf fields for soccer, lacrosse and football
- More lit soccer fields
- More maintenance on existing parks
- More Natural areas.
- More natural space and trails
- More neighborhood playgrounds that are easy for kids to walk to!

- More of them
- More off-leash open space for dogs.
- More open space
- More open space.
- More parking & disabled allotment @ Little League Baseball Fields off Burnham
- More parking and more waterfront parks
- More pedestrian friendly facilities
- More Pickeball
- More Pickelball courts. Preferably covered and with lights.
- More pickleball courts
- MORE PICKLEBALL COURTS!
- More play equipment
- More playground, bmx, spray park and amenities for kids and pets
- More playgrounds
- More playgrounds
- More playgrounds and activities for young kids
- More playgrounds for kids
- More playgrounds!
- More playgrounds. The ones we see are too crowded so we don't use them often.
- More public access to shoreline all around area.
- More public beaches with off street parking.
- More public boat docks!
- More public waterfront areas
- More public, community gardens!
- More Restrooms and Parking
- More roadside trails to ride bikes around town for families.
- More sand courts
- More sand volleyball courts at Crescent Park as promised
- More sidewalks
- More sidewalks, more trails, more safe ways to get around the area on bike or foot, and a comprehensive map of all of those.
- More soccer fields
- More soccer fields with lights.
- More soccer fields. It is embarrassing that we do not have quality soccer fields with the popularity of this sport and the increased amount of families in Gig Harbor.
- More soft surface trails and dog parks please!
- More soft surface trails with off-leash areas that are maintained well
- More sports areas!
- More sports fields with lights. We have so many youth sports and finding places to practice and play home games is difficult because of the lack of sports fields in our area. Our community would be so grateful for this!
- More sports fields!
- More tennis courts please
- More trails

- More trails
- More trash can availability and removal services because there is dog poop bags everywhere!
- More trash receptacles, better maintenance on playground equipment, more covered areas
- More turf and grass field with lights. There is a significant shortage of these fields.
- More turf fields with lights for all field sports.
- More volleyball courts
- More walking paths
- More walking trails
- More walking trails
- More walking trails by the water
- More walking/hiking trails to alleviate crowding on current trails.
- More water view areas with seating/picnicking
- More wood chip on soft trails where it's muddy in the winter
- More/better Sound waterfront access
- Multi acre Off leash area for dogs. Get volunteer stewards to manage the area.
- My son goes to the skatepark almost every day, he always says that the concrete is too rough and it hurts a lot to fall. The design of the park is very odd and could use a remodel, and there are a lot of other skaters that agree with him. Thank you for your consideration.
- Need a larger area with fields and lights for soccer and football
- Need covered Pickleball courts! It's sad that other areas with less people have better facilities for the fastest growing sport in the US. We are so limited here in playing only in the dry season
- New play structures with shade/covered to be able to use in the rain.
- New skatepark
- No more play fields
- Not sure.
- Nothing comes to mind currently.
- Offer more activities (by popular demand) to do at the parks we currently have. Not little things like pieces of metal that make sound in the wind... More like adding soccer goals and outlining a field for people to use. Creating more offleash dog sections for owners who need to give their pets a place to run. Providing food trucks in the parking lots during the summer. Skate parks to reduce vandalism of property at parks that aren't made for skateboards. Scooter rentals where people can leave their scooters at any of the parks. List goes on.
- Offer more events
- Old Ferry Landing Park is a highly visible and visited park requiring substantial updates. It is the first point visible upon entry to our beautiful harbor. It's currently unkept state does not represent our community or what Gig Harbor has to offer. Many photos of our iconic views are taken from this spot, however it is hard to find a photo of this park. No body is proud enough to take photos of it because it is substantially lacking in amenities, lacks ease to accessing the water and most importantly it is not Safe! This is a place that has amazing potential and where our community could really shine. We can do Better!
- Our city needs a public aquatic center. We are limited in choices on where our kids can swim or have lessons. I'd rather stay in Gig Harbor rather than go to Fircrest or Tacoma or even Bremerton. For as big as Gig Harbor is getting I'm surprised our only options are an expensive club, Canterwood, the YMCA, and Beard Swim Co. we need a public aquatic center.
- Our forested land provides us with not only great beauty, but also the power to protect our health and safety for generations to come. Currently, we are failing to recognize the threat of the shrinking of our forests in the face of burgeoning development. Can we afford to allow that to go unabated? As our climate warms and heatwaves like the one we experienced in June become all too common, we are going to lose the natural shade and cooling impacts that those trees provide. We also need them to continue preventing flood and soil erosion, boost our mental health, provide a home for wildlife, generate clean air and filtered water, and, above all, combat climate change due to their amazing powers to absorb the carbon that is causing

global warming. While it is always admirable to create recreational areas throughout our communities, those who enjoy them will not thank us for being short-sighted when climate change threatens their lives. So, I would like to see Gig Harbor address urban and recreational growth after it develops a plan to stop the rapid decline of our forests.

- Outdoor heated community pool
- Outdoor pool/community pool
- Outdoor swimming pool for Gig Harbor residents
- Paint the lighthouse on the marine park. It is the landmark entrance to our harbor and it is looking run down and in kept! A real eye sore! The Tanglewood Lighthouse is being restored beautifully - why do we let ours look so terrible???
- Parking
- parking access to waterfront areas
- Parking at Skansi Park
- Parking with safety - Cushman trail.
- Parks and natural areas are the heart of the city. Keep making them a priority!
- Patrol parks properly to mitigate illegal/illicit activities such as drug use and vandalism
- Patrol so dog poop is cleaned up
- Paved bike trails that are flatter/easier for families with small children. Cushman trail is too hilly for little kids.
- Paved jogging trail (stroller friendly) that is not hilly. Cushman trail is too hilly for running or kids on scooters or bikes. Need a trail for that.
- Peacock Hill sidewalk Harbor Hill to water and Harbor Ridge. Also a better walking running path around the harbor. Easements through marinas or boardwalks, etc
- Permanent running water restrooms/drinking fountains Fine to lock at night but pls keep open in the day
- Pick up trash regularly to keep parks clean.
- Pickleball courts
- Place doggy bags at Shaw Park
- Plant more trees, remove invasive species, get the community involved in service projects to create a sense of "sweat equity" and ownership in their parks.
- Playgrounds
- Please add a community pool! We are a young vibrant wealthy community surrounded by water yet there is a 300 person waiting list to get swim lessons at our local pools! It is not acceptable
- Please create a community pool / aqua center. We are surrounded by water - have so many young kids and teens here that we need to have a community pool for people to have safe and productive areas to spend their time and learn to swim. This will be so enriching for the community! I am an advocate for safe swim gig harbor -
- Please create more sports fields! We have grassy spaces, we have playgrounds, we have open space. What we don't have are any city parks for sports like soccer, lacrosse, flag football or the like. Team sports build community unity and are vital for our youth. I know fields will eventually go up by the YMCA but even those won't meet the needs of the entire community.
- Please empty your trash cans more often.
- Please focus on homeless, trash and vehicle safety concerns to ensure safety at all parks. Top priority.
- Please keep as many trees/natural areas as you can.
- Please maintain and improve Shaw Park in north Gig Harbor. It's currently an eyesore and very rarely utilized by community. Needs shaded areas, benches and landscaping and improved maintenance.
- Please make adding an outdoor pool a priority.
- Please please consider! I would donate to have a community pool. Thank you!
- Please please please more volleyball courts! Expand the sand courts and give us another location please! We need sport courts!
- Please support a public aquatic center. We strongly support the Swim Safe Gig Harbor campaign.

- Plenty of cameras and lights on remote trails for safety. Keep the security guard at Bella Bella!
- pool
- Pools and splash pads!! There are no
- Post signs that poop bags must be taken with them and not left on the sidewalks, inserted into fences, etc. Post signs that it is not okay to litter with face masks and flossers.
- preservation of natural areas (even if it means land acquisition as opportunities present, e.g. Crescent Creek)
- Preserve more land for future use. Overdevelopment will destroy the community. Land preservation is 1 and then creating uses is 2.
- Prevent homeless encampments
- Prioritize and build ASAP outdoor lighted Turf Fields for Soccer, Baseball, Lacrosse. Huge need in community. Would also be a huge potential for revenue increase for local community in holding tournaments etc that currently can't support.
- Prioritize woods and trails. I understand a need for sports, but my family uses hiking locally as our exercise. Thank you.
- promote knowledge of our natural areas with signage, etc. (ie - names of plants and trees)
- Proper tree and shrub plantings
- Properly maintain existing sand volleyball courts. And add two new courts.
- Protect and restore existing natural areas and use as educational opportunities.
- Protect the waterfront by maximizing park spaces there.
- Protect them from homeless camps and drug use. Number one priority. They have to be clean and safe to be if any use. Please do not let gig harbor parks turn into tacoma and Seattle homeless camps. Please.
- Provide a personal watercraft launching area with adequate parking.
- Provide additional restrooms
- Provide adequate maintenance staff
- Provide more recreational activities for kids. It's so limited in this town and the registration closes so quickly. I have no idea when to sign up for anything such as soccer because I don't have Facebook. I feel left out because I don't receive any sort of notification to sign up through PenMet or any other organization for rec sports. I'm frustrated. And I can't stand mulch. Sehmel park is the best for small kids.
- Provide more sports fields so the kids don't have to leave the harbor for competitive sports.
- Provide more tennis courts
- Provide more trails for biking and hiking.
- Provide safe parking areas. Also, Gig Harbor needs indoor/covered shelter options for the wintertime. A wonderful improvement to this city would be the addition of an indoor/outdoor aquatics center for adults and kids.
- Provide support for the Harbor Hill Environmental Sanctuary
- Public access boat ramp with parking
- Public aquatic center
- Public boat dock with fuel. Bring back Coast Guard to GH for boater enforcement.
- Public kayak, SUP, man-powered boat waterfront launch access,
- Public outdoor pool.
- Public pool, more community events like the movie nights, concerts etc
- Public swim area for lessons and health care. Indoor public recreation facility that doesn't cost an arm and a leg to join with more kids activities.
- Public water access
- Pump Track
- Pump track!
- Purchase as much waterfront as possible. People love beaches and then you only need to provide restrooms.

- Purchase more waterfront land for parks! There is way too much private waterfront property in Gig Harbor!
- Put in a community pool/ aquatic center to teach the younger children how to swim!
- Restrooms
- Resurface Crecent park tennis and basketball courts-including replacing the tennis net and re-lining the four pickleball courts shared on the tennis court
- Resurface Crescent Creek tennis court! Plus, add more tennis courts and stop making them dual pickle ball/tennis!
- Safe parking
- Safe trail (maybe a loop around a park) for running/family biking, or promote use of Cushman Trail. I *love* running the Cushman Trail, but it feels unsafe because it's remote and not well used by other women. A flat paved loop (with no driveways or traffic) would also be great for families with strollers or young children on bikes.
- safety measures
- safety of parking areas (car break-ins and drug deals)
- Safety of parking lot on cushman.
- Save the North Creek valley.
- Secure more areas to to keep more open spaces from development
- Shaw Park is in poor condition and needs to be improved, particularly the trees (which were improperly planted and are not thriving).
- Shaw Park. Drainage, soil upgrade, new lawn,
- Shut down or require a sound proof indoor facility at the "Sportsman's Club".
- Sidewalks in neighborhoods especially along super busy roads so that we can walk to parks. This also makes parks more sustainable and reduces parking constraints at parks.
- Six Lighted turf fields.. build the entire sports complex
- Small parks in residential areas should be better maintained and expanded. Having places for children to play close to their homes is essential
- Soccer fields, soccer fields, soccer fields, futsal court, splash park
- Soccer or athletic field complex
- Soundview Forest Park: 1. Remove ivy. 2. Install monument with plaque recognizing the Mayor's contribution to acquiring park. 3. Carve an existing tree stump on Harborview Drive with wildlife, similar to a stump in Grandview Park near the restrooms.
- Spend more time & money on keeping them looking great.
- Splash pad
- Splash pad
- Splash pad for kids
- Splash pad, playgrounds
- Splash pad, wading pool, etc. available for seniors and kids alike.
- Splash pad/ indoor swimming opportunities
- Splash pads, more playgrounds. More basketball courts
- Sports complex
- Sports complex development in north gh.
- Sports fields
- Spray park
- Spraypark & pump track!
- Stay ahead of graffiti
- Stop allowing more homes, apartments, condos, and so on to be built!!!

- Stop building. Stop building new sports centers and playgrounds and bike paths and everything else that involves cutting down trees and covering natural land in cement. Gig Harbor has enough of those amenities already and watching it consume every natural resource possible to make money and commodify our natural areas is utterly heartbreaking.
- Stop clear cutting for housing!
- Stop clearcutting forested areas! We already have more than enough sports complexes, especially with spaces like Sehmel Park already offering nice sports facilities. I'm very disappointed that all of that natural area by the YMCA is being leveled for the multi-acre sports complex. Allow animals and native plants to coexist with minimally invasive walking/hiking paths. On a side note, add more bike paths along both sides of the street. Hunt and Rosedale could use better bike lanes.
- stop cutting down all the trees and ruining wild spaces and stop building track homes and stacked living. Please leave some wild spaces for the animals.
- Stop taxing us more. Cannot afford it! Parks don't have to be so developed... just open air, grass and woods is fine!
- Support the maintenance of existing facilities.
- Support the Safe Swim Gig Harbor initiative to bring an affordable public swimming pool to the community.
- Swimming pool, more paved trails for biking, sports complex (including indoor)
- SWIMMING POOL!!!!
- Take care of Shaw Park
- Tennis courts and pickle all. City pool!
- Tennis, pickle ball and bike trails
- The City should complete work on the Sports Complex right away. The City needed the proposed fields more than a decade ago and completing them now is critical. Complete Phase 1A (with or without the YMCA), re-configure and put turf on the Little League fields, and start work on designing the property south of the YMCA. The City should make improvements to the baseball field at City Park (field drainage). The City should also re-consider the usage agreement for Veterans/Memorial Park. The first-come, first-served approach is terrible. This City needs fields. With exception to the high school turf fields and PenMet Park's turf field, the fields located in and around the City are in poor condition and our children deserve better. I would like the City to demonstrate leadership in this regard.
- The connection of parks and extensions to Cushman Trail make our city park system unique and special.
- The existing parks are great! We live in town and walk to the waterfront daily. Maybe when COVID has let up there could be more events.
- The Gig Harbor waterfront is a magnet for walkers, runners, visitors of all ages. Anything you can do to make it exceptional and safe, heat keep its traditional charm is essential to maintain the beautiful lure and lifestyle of our community, and keeps Gig Harbor a special place.
- The kids need more outdoor soccer field, tracks accessible by community, basketball courts ECT ECT. For instance our HOA says we can't have a basketball hoop in our driveway yet there's no basketball courts for our kids to play on. The Little League field is closed off unless it's a game or practice but other little kids are not on a team have nowhere to practice or play. We're lacking swimming pools for public use.
- The sink in the bathroom at Crescent Creek park is almost impossible to use.
- There should be better access for canoe and kayakers into the water!
- Too much construction!!! Need more trees!!
- Trails groomed
- Trash cans
- Turf fields for youth sports
- Turf GHLL field then build additional soccer fields
- Turf soccer fields. I have 4 boys that play soccer and all of the major towns/cities have their own playing fields. Not us though and the money that traveling soccer teams would bring to our community would be substantial and great for local business owners
- Unsure
- upgrade maintenance of existing volleyball courts and add at least 2 more.

- Walk to Sehmel park.
- Walking paths
- Water access for manpower crafts
- Water park and city swimming facilities
- We are in desperate need of more sports fields for our youth...and adults!
- We desperately need a pool. There's no where with good access for kids to learn to swim or for local kids to participate in swim teams. The pool should have a lap pool, play area and a fun interest item like a slide or lazy river.
- We have great parks and open spaces. Ask developers to pay for additional.
- We need a covered swimming pool, open year round for developing swim skills.
- We need a pool to teach our children to swim!
- We NEED a Public Aquatic Center.
- We need a swimming pool. So many people are interested in swimming lessons and availability is nonexistent.
- We need an aquatic center equipped for competitive sports (water polo, swim, dive, etc).
- We NEED an aquatic center here for kids to learn to safely swim.
- We need an aquatic center in the harbor. Swim Safe Gig Harbor is a campaign that we should work with to accomplish this.
- We need an aquatic center!! A place where people lap swim, families can play, and bring our growing community together.
- We need indoor gathering places we can afford to rent.
- We need more lighted sport fields for soccer, football and lacrosse. Field space is a huge problem.
- We need more parking at existing boat launches in GH.
- We need more spaces for young kids to ride bikes and we desperately need a public aquatic facility with both daytime open swim options and more swim lesson options than the current facilities can supply (the current wait lists are absurd for a town that prides itself for water based activities).
- We need the lighted fields up by the YMCA!
- We really need an alternative or possibly a 2nd YMCA. Tom Taylor is great but the growth in the area is exploding. Too many people = more than just one facility please!!!! I humbly request a full rec center with pool (swim lessons) and an operational slide! Of course it shall have workout equipment. If it came with an outdoor pool too that's also poorly missing in Gig Harbor.
- We really need an aquatic center. Kids are very limited in their options for swimming lessons and getting confident in the water. An aquatic center would provide that. We have enough outdoor parks.
- We would love more lighted field for soccer. It's a shame that we can't provide enough space within our city for our own kids.
- We would love some indoor options of places to hang out and play during the winter/fall/spring. It's so hard to find active and positive things to do as a family during our dark and rainy seasons.
- We would love to see a better public kayak launch and a waterfront park with playground. We find that public access to the water to launch a kayak is a bit difficult here. Thank you for your time!
- Work with PenMet parks for park system continuity.
- Work with police to monitor parking lots. I feel safe using parks etc but I don't feel my car is safe.
- Work with the historical society to develop a preservation plan for the historic buildings on park property.
- Work with what we have instead of clear-cutting everything. I'd much rather have 17 acres of trails than 17 acres of soccer fields.
- Would like more options for a volleyball and basketball recreational play area
- Would love to see more dog parks
- Would love to see outdoor exercise equipment along Cushman Trail, as well as Veterans Park (and anywhere else they make sense!)
- You all do a great job. We have beautiful parks.
- You are doing a decent job keeping them clean so just keep it going.



PUBLIC WORKS DEPARTMENT

MEMORANDUM

TO: Public Works Committee Members

FROM: Brienn Ellis, Stormwater Engineering Technician

DATE: October 12, 2021

SUBJECT: Stormwater Revenue Study Draft Ordinance

The City of Gig Harbor has had a stormwater utility since 1984. Since then, the City has seen significant growth, including the growth of our stormwater infrastructure. The City is mandated under a National Pollution Discharge Elimination System (NPDES) permit which regulates the discharge of water pollution and requires multiple stormwater tasks to be completed by the City. Each of those tasks have associated costs to implement our stormwater management program.

At the June 10 City Council Study Session, it was recommended that staff proceed with the Stormwater Revenue Study to clarify the City's storm billing policies by considering current stormwater utility costs and possible code updates.

Virtual Open Houses, held on September 15 and 16, provided information to the public on Gig Harbor's stormwater infrastructure, permit regulations, current costs, EBU's (equivalent billing units), and perceived rate inequalities.

Staff has prepared the attached draft update to GHMC 14.10 for consideration by the Public Works Committee at the October 12 meeting based on input from Council at the June 10 Study Session and from the public since the virtual open houses.

Chapter 14.10 STORMWATER BILLING AND COLLECTION

14.10.010 Definitions.

The following words when used in this chapter shall have the following meanings, unless the context clearly indicates otherwise:

- A. The “city” shall mean the corporate limits of the city of Gig Harbor, Washington, a municipal corporation created and existing under the laws of the state of Washington.
- B. “Developed” shall mean real property that has hard surfaces.
- C. “Equivalent billing unit” or “EBU” shall mean 4,400 square feet of hard surface.
- D. “Hard surface” shall mean all surfaces that are part of a built environment or other human-made physical features, except for landscaped areas with vegetation.
- E. “Parcel” shall mean each legally defined tract of real property.
- F. “Residential” means activity involving the human occupation of a building for living, cooking, sleeping, and recreation.
- G. “Single-family dwelling” means a residential structure with one dwelling unit that is constructed on a permanent foundation. Single-family dwellings are detached from other single-family dwellings except that accessory apartments may be attached to a single-family dwelling.
- H. “System” shall mean the entire system of stormwater facilities owned by the utility or over which the utility has control or right of use for the movement and retention of storm and surface waters, including both naturally occurring and manmade facilities.
- I. “Undeveloped” shall mean real property that is not considered developed.
- J. “Utility” shall mean the city stormwater utility, a municipal separate storm sewer system (MS4) as defined by Western Washington Phase II Municipal Stormwater Permit, which operates and maintains the storm or surface water drains, channels and facilities, outfalls for storm drainage and the rights and interests in property relating to the system.

14.10.020 Policy on rates and charges.

A. Each single-family dwelling, each accessory dwelling unit, each residential unit of a duplex, and each mobile/manufactured home, is one equivalent billing unit for each parcel of developed real property.

B. For all other developed real properties, the utility shall determine the number of equivalent billing units contained on each parcel based on the amount of hard surface on each parcel as defined in GHMC 14.10.010. Regardless of calculation of hard surface, a minimum of one equivalent billing unit shall be determined. Calculations that result in more than one equivalent billing unit shall be adjusted to the nearest 0.1 EBU.

14.10.030 Classification of property.

Repealed.

14.10.040 Undeveloped real property.

Repealed.

14.10.050 Stormwater monthly service rates.

A. In accordance with the basis for a rate structure set forth in GHMC [14.10.020](#) , each parcel of developed real property shall be charged the following monthly service rates, not including state and city sales tax, which shall be collected from the owner of each parcel based on the number of equivalent billing units contained on each parcel:

1. Effective August 1, 2015, shall be \$12.56.
2. Effective January 1, 2016, shall be \$13.00.
3. Effective January 1, 2017, shall be \$13.46.
4. Effective January 1, 2018, shall be \$13.93.
5. Effective January 1, 2019, shall be \$14.42.
6. Effective January 1, 2020, shall be \$14.92.

14.10.055 Stormwater system general facilities charges.¹

The city shall impose a stormwater general facilities charge of \$1,770 for each equivalent billing unit for each parcel of developed real property pursuant to GHMC [14.10.020](#). Each general facilities charge shall be calculated and paid to the city at the time of building permit issuance.

14.10.060 Property exempt from monthly rates and general facilities charges.

The following special categories of developed property are exempt from monthly service rates and general facilities charges:

A. City street rights-of-way;

B. State of Washington and Pierce County highway rights-of-way.

14.10.070 Collection.

A. All rates, charges, and all other utility fees or charges hereafter established by the city council by ordinance shall be deemed to be levied upon the premises themselves.

B. The city shall have a lien for all delinquent and unpaid rates, charges, and fees for stormwater utility purposes, including without limitation monthly rates and system development charges assessed against all premises to which service was furnished, which lien shall have the superiority established by RCW [35.67.200](#) and shall be foreclosed in the manner provided in RCW [35.67.220](#) et seq.

C. As an additional and concurrent method of enforcing its lien upon any premises for delinquent stormwater utility rates, charges, and fees, the utility is authorized, in accordance with law and in the manner provided by this code to stop providing water service to such premises for so long as any delinquent rates, charges, or fees remain unpaid.

D. Unpaid stormwater monthly service rates shall be deemed delinquent if not paid within 30 days following the billing date. Interest at the rate of eight percent per year shall be charged on all delinquent monthly service rates and late charges.

E. Utility appeals shall be directed to the Public Works Director or designee.

14.10.080 Periodic review of rates, charges, and fees.

Periodic review of rates, charges and fees will be completed by the city.

14.10.090 Commencement or termination of stormwater monthly service rates.

A. Monthly service rates shall commence when a water utility meter is turned on or a Certificate of Occupancy for the parcel is issued, whichever comes first.

B. Monthly service rates shall terminate on parcels that undergo city permits to bring property back into a state of undeveloped real property as of the date of final approval for a city-issued demolition permit.

2021 CIP Project Schedule - Tier 1 Projects

ID	Task Name	Duration	Start	Finish	Permitting	Predecessors	Sep '21	Nov '21	Jan '22	Mar '22	May '22	Jul '22	Sep '22
1	Parks Projects												
2	Eddon Boat Brick House Rehabilitation	229 days	Mon 11/16/20	Thu 9/30/21	Building Permit								
3	Construction	229 days	Mon 11/16/20	Thu 9/30/21									
4	Railway Carriages at Eddon Boat Building	316 days	Tue 12/1/20	Tue 2/15/22	Building Permit								
5	Design	68 days	Tue 12/1/20	Thu 3/4/21									
6	Bid Award	1 day	Mon 4/12/21	Mon 4/12/21		5							
7	Fabrication	123 days	Tue 4/13/21	Thu 9/30/21		6							
8	Installation	98 days	Fri 10/1/21	Tue 2/15/22		7							
9	Community Paddler's Dock	305 days	Mon 11/2/20	Fri 12/31/21	Land Use and Building								
10	Design/Permitting	186 days	Mon 11/2/20	Mon 7/19/21									
11	Bid Award	0 days	Mon 7/26/21	Mon 7/26/21									
12	Construction	102 days	Thu 8/12/21	Fri 12/31/21		11							
13	Austin Estuary Honoring Symbol	445 days	Sun 3/1/20	Fri 11/12/21	Land Use and Building								
14	Art Carving	187 days	Sun 3/1/20	Sun 11/15/20									
15	Land Use Application Development	57 days	Thu 4/1/21	Fri 6/18/21									
16	Land Use Application Submittal, Review, and Appeal Periods	78 days	Wed 6/30/21	Fri 10/15/21		15							
17	Building Permit Application Consultant Contracting, Submittal,	45 days	Mon 7/26/21	Fri 9/24/21									
18	Small Works Roster Advertisement	11 days	Thu 9/9/21	Thu 9/23/21									
19	Bid Opening	1 day	Thu 9/23/21	Thu 9/23/21									
20	Small Works Contract Award	1 day	Mon 9/27/21	Mon 9/27/21									
21	Art Base Construction	11 days	Mon 10/18/21	Mon 11/1/21									

Legend	Task		Project Summary		Inactive Milestone		Manual Summary Rollup		Deadline	
	Split		External Tasks		Inactive Summary		Manual Summary		Progress	
	Milestone		External Milestone		Manual Task		Start-only		Manual Progress	
	Summary		Inactive Task		Duration-only		Finish-only			

2021 CIP Project Schedule - Tier 1 Projects

ID	Task Name	Duration	Start	Finish	Permitting	Predecessors	Sep '21	Nov '21	Jan '22	Mar '22	May '22	Jul '22	Sep '22
22	Installation	9 days	Tue 11/2/21	Fri 11/12/21		21							
23	Ancich Human Powered Waterfont Storage Design	152 days	Thu 4/1/21	Fri 10/29/21	Building Permit								
24	Design	87 days	Thu 4/1/21	Fri 7/30/21									
25	Fabrication & Installation	65 days	Mon 8/2/21	Fri 10/29/21		24							
26	Ancich Park Advanced Mitigation Project	276 days	Tue 1/26/21	Tue 2/15/22	Land Use Perm								
27	Design/Permitting	228 days	Tue 1/26/21	Thu 12/9/21									
28	Award	0 days	Mon 12/13/21	Mon 12/13/21									
29	Construction	47 days	Mon 12/13/21	Tue 2/15/22		28							
30	Parks, Recreation and Open Space Plan Update	272 days	Mon 2/1/21	Tue 2/15/22									
31	Development and Public Process	272 days	Mon 2/1/21	Tue 2/15/22									
32	City Buildings												
33	HVAC Assessment	198 days	Wed 3/31/21	Fri 12/31/21									
34	Consultant Selection	153 days	Wed 3/31/21	Fri 10/29/21									
35	Analysis and Report	45 days	Mon 11/1/21	Fri 12/31/21		34							
36	Civic Center Building Access/Control	216 days	Fri 1/1/21	Fri 10/29/21									
37	Product Selection and Bid Package Development	216 days	Fri 1/1/21	Fri 10/29/21									
38	City Streets Projects												
39	Pedestrian Crosswalk Improvements - Gig Harbor North	179 days	Mon 1/25/21	Thu 9/30/21									
40	Consultant Selection	11 days	Mon 1/25/21	Mon 2/8/21									
41	Design	79 days	Mon 3/1/21	Thu 6/17/21									
42	Bid Award	1 day	Mon 7/12/21	Mon 7/12/21									

Legend	Task		Project Summary		Inactive Milestone		Manual Summary Rollup		Deadline	
	Split		External Tasks		Inactive Summary		Manual Summary		Progress	
	Milestone		External Milestone		Manual Task		Start-only		Manual Progress	
	Summary		Inactive Task		Duration-only		Finish-only			

2021 CIP Project Schedule - Tier 1 Projects

ID	Task Name	Duration	Start	Finish	Permitting	Predecessors	Sep '21	Nov '21	Jan '22	Mar '22	May '22	Jul '22	Sep '22
43	Construction	37 days	Thu 7/22/21	Fri 9/10/21		42							
44	Construction Close-out	20 days	Thu 9/2/21	Wed 9/29/21		43,43							
45	Public Works Operation Center-Building Design and Permit	211 days	Tue 2/9/21	Tue 11/30/21	Building Permit								
46	Design/Permitting	211 days	Tue 2/9/21	Tue 11/30/21									
47	Stinson Ave Pavement Overlay/Pedestrian Improvements & Stinson/Rosedale Intersection	171 days	Mon 3/8/21	Mon 11/1/21									
48	Bid Award	1 day	Mon 3/8/21	Mon 3/8/21									
49	Construction	156 days	Mon 3/29/21	Mon 11/1/21		48							
50	Stinson/Harborview Intersection Improvements	380 days	Thu 12/17/20	Wed 6/1/22									
51	Design	131 days	Thu 12/17/20	Thu 6/17/21									
52	Bid Award	1 day	Mon 7/26/21	Mon 7/26/21		51							
53	Construction	208 days	Mon 8/16/21	Wed 6/1/22		51,52							
54	38th Avenue Improvement Project-Phase 1A	267 days	Thu 12/17/20	Fri 12/24/21									
55	Design	82 days	Thu 12/17/20	Fri 4/9/21									
56	Bid Award	1 day	Mon 5/24/21	Mon 5/24/21		55							
57	Construction	135 days	Mon 6/21/21	Fri 12/24/21		56,55							
58	Burnham 1/2 Street Improvements Ph 1A	261 days	Fri 1/1/21	Fri 12/31/21	Land Use Permit								
59	Design/Permitting	261 days	Fri 1/1/21	Fri 12/31/21									
60	ADA Self-Evaluation and Transition Planning Program	161 days	Mon 5/3/21	Mon 12/13/21									
61	Consultant Selection	74 days	Mon 5/3/21	Thu 8/12/21									
62	Plan Development and Public Process	70 days	Fri 8/13/21	Thu 11/18/21		61							
63	PW Committee Review and Council Adoption	25 days	Tue 11/9/21	Mon 12/13/21		62							

Legend	Task		Project Summary		Inactive Milestone		Manual Summary Rollup		Deadline	
	Split		External Tasks		Inactive Summary		Manual Summary		Progress	
	Milestone		External Milestone		Manual Task		Start-only		Manual Progress	
	Summary		Inactive Task		Duration-only		Finish-only			

2021 CIP Project Schedule - Tier 1 Projects

ID	Task Name	Duration	Start	Finish	Permitting	Predecessors	Sep '21	Nov '21	Jan '22	Mar '22	May '22	Jul '22	Sep '22
64	Prentice Ave/Fennimore St Half-Width Frontage Improvements	94 days	Tue 8/24/21	Fri 12/31/21									
65	Consultant Selection	25 days	Tue 8/24/21	Mon 9/27/21									
66	Preliminary Design and Estimating	88 days	Wed 9/1/21	Fri 12/31/21									
67	Water Projects												
68	Emergency Water Intertie- Canterwood Blvd	260 days	Mon 5/17/21	Fri 5/13/22									
69	Design	142 days	Mon 5/17/21	Tue 11/30/21									
70	Bid Award	1 day	Mon 12/13/21	Mon 12/13/21		69							
71	Construction	80 days	Mon 1/24/22	Fri 5/13/22									
72	Water Comp Plan Update	130 days	Mon 5/3/21	Fri 10/29/21									
73	Design	130 days	Mon 5/3/21	Fri 10/29/21									
74	Wastewater Projects												
75	Lift Station 6 Replacement	424 days	Tue 12/15/20	Fri 7/29/22									
76	Design	119 days	Tue 12/15/20	Fri 5/28/21									
77	Construction	225 days	Mon 9/20/21	Fri 7/29/22		76							
78	Lift Station 12 Rehabilitation Design	456 days	Thu 12/17/20	Thu 9/15/22									
79	Design	118 days	Thu 12/17/20	Mon 5/31/21									
80	Permitting	44 days	Tue 7/6/21	Fri 9/3/21		79							
81	Bid Award	1 day	Thu 9/16/21	Thu 9/16/21									
82	Construction	234 days	Mon 10/25/21	Thu 9/15/22		79,81							
83	Murphy's Landing Marina Navigation Channel Dredging	332 days	Thu 1/21/21	Fri 4/29/22									
84	Agreement	78 days	Thu 1/21/21	Mon 5/10/21									

Legend	Task		Project Summary		Inactive Milestone		Manual Summary Rollup		Deadline	
	Split		External Tasks		Inactive Summary		Manual Summary		Progress	
	Milestone		External Milestone		Manual Task		Start-only		Manual Progress	
	Summary		Inactive Task		Duration-only		Finish-only			

2021 CIP Project Schedule - Tier 1 Projects

ID	Task Name	Duration	Start	Finish	Permitting	Predecessors	Sep '21	Nov '21	Jan '22	Mar '22	May '22	Jul '22	Sep '22
85	Consultant Selection	16 days	Mon 7/19/21	Mon 8/9/21		84							
86	Design/Permitting	187 days	Thu 8/12/21	Fri 4/29/22		85	[Gantt bar from Sep '21 to May '22]						
87	Waterwater Treatment Plant Digester Upgrades	108 days	Mon 8/2/21	Wed 12/29/21	Building Permit		[Gantt bar from Sep '21 to Jan '22]						
88	Consultant Selection and Design	63 days	Mon 8/2/21	Wed 10/27/21			[Gantt bar from Sep '21 to Oct '21]						
89	Construction	45 days	Thu 10/28/21	Wed 12/29/21			[Gantt bar from Nov '21 to Dec '21]						
90	Stormwater Projects						[Gantt bar from Sep '21 to Dec '21]						
91	Burnham Dr. and 96th Culvert Repair	261 days	Fri 1/1/21	Fri 12/31/21	Land Use Permit		[Gantt bar from Sep '21 to Jan '22]						
92	Design/Permitting	261 days	Fri 1/1/21	Fri 12/31/21			[Gantt bar from Sep '21 to Jan '22]						
93	Storm Utility Revenue Study	226 days	Mon 2/1/21	Mon 12/13/21			[Gantt bar from Sep '21 to Dec '21]						
94	Consultant Selection & Contract Authorization	36 days	Mon 2/1/21	Mon 3/22/21			[Gantt bar from Sep '21 to Oct '21]						
95	Development and Public Process	164 days	Mon 2/1/21	Thu 9/16/21			[Gantt bar from Sep '21 to Nov '21]						
96	PW Committee Review and Council Adoption	62 days	Fri 9/17/21	Mon 12/13/21		95	[Gantt bar from Oct '21 to Dec '21]						
97	Other Department Tasks						[Gantt bar from Sep '21 to Dec '21]						
98	Utility Rate Studies	195 days	Wed 9/1/21	Wed 6/1/22			[Gantt bar from Sep '21 to Jun '22]						
99	Development and Public Process	61 days	Wed 9/1/21	Wed 11/24/21			[Gantt bar from Sep '21 to Nov '21]						
1...	PW Committee Review and Council Consideration	112 days	Thu 11/25/21	Fri 4/29/22		99	[Gantt bar from Dec '21 to May '22]						
1...	Effective Date	0 days	Wed 6/1/22	Wed 6/1/22			[Gantt bar at Jun '22]						

◆ 6/1

Legend	Task		Project Summary		Inactive Milestone		Manual Summary Rollup		Deadline	
	Split		External Tasks		Inactive Summary		Manual Summary		Progress	
	Milestone		External Milestone		Manual Task		Start-only		Manual Progress	
	Summary		Inactive Task		Duration-only		Finish-only			

2021 CIP Project Schedule - Tier 2 Projects

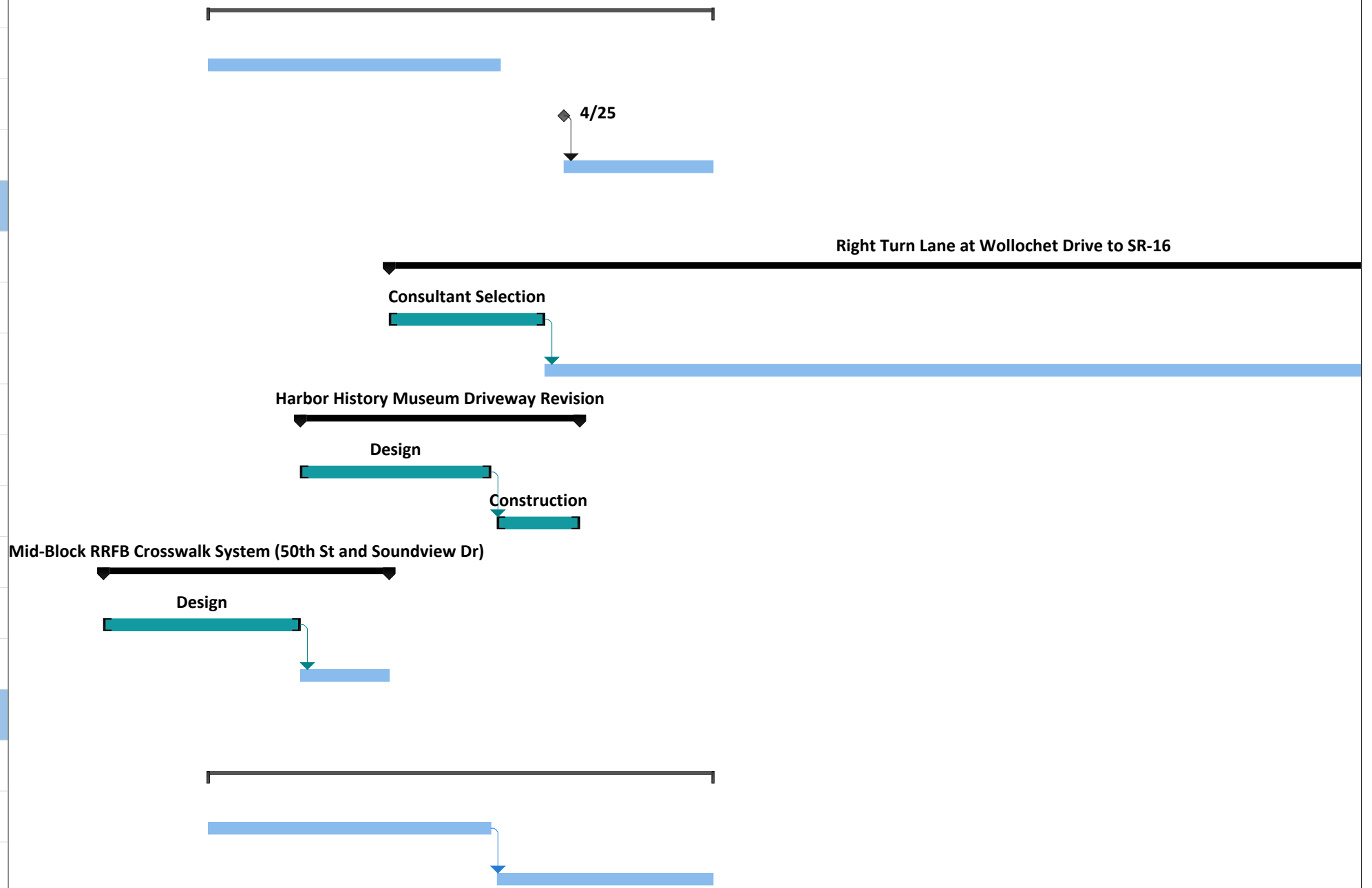
ID	Task Name	Duration	Start	Finish	Permitting	September 1	October 11	November 21	January 1	February 11	March 21	May 1	June 11	July 21	September 1	October 11
1	Parks Projects															
2	Native Vegetation Plantings 2021															
3	Site Selection	45 days	Thu 9/23/21	Wed 11/24/21												
4	Installation	27 days	Thu 11/25/21	Fri 12/31/21												
5	Gig Harbor Sports Complex Phase 1B Design and Permitting	434 days	Tue 11/2/21	Fri 6/30/23												
6	Design/Permitting	219 days	Tue 11/2/21	Fri 9/2/22												
7	Bid Award	0 days	Mon 9/12/22	Mon 9/12/22												
8	Construction	246 days	Tue 9/13/22	Tue 8/22/23	4											
9	City Buildings															
10	None															
11	City Streets Projects															
12	None															
13	Water Projects															
14	None															
15	Wastewater Projects															
16	2021 Generator Replacement	54 days	Mon 10/4/21	Thu 12/16/21												
17	Construction (LS#2A)	54 days	Mon 10/4/21	Thu 12/16/21												
18	Stormwater Projects															
19	Donkey Creek Daylighting	131 days	Wed 12/1/21	Wed 6/1/22												
20	Conceptual Design and Public Process	131 days	Wed 12/1/21	Wed 6/1/22												
21	Other Department Tasks															
22	None															



Legend	Task	Project Summary	Inactive Milestone	Manual Summary Rollup	Deadline
	Split	External Tasks	Inactive Summary	Manual Summary	Progress
	Milestone	External Milestone	Manual Task	Start-only	Manual Progress
	Summary	Inactive Task	Duration-only	Finish-only	

2021 CIP Project Schedule - Tier 3 Projects

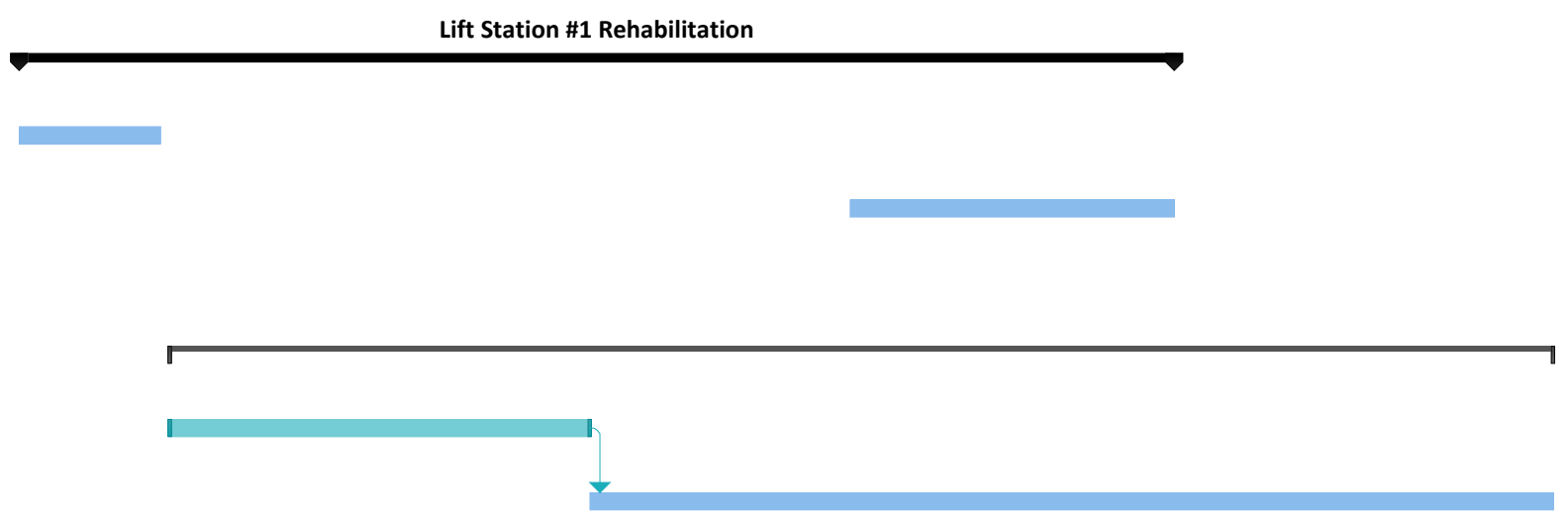
ID	Task Name	Duration	Start	Finish	Permitting	Nov '21	Dec '21	Jan '22	Feb '22	Mar '22	Apr '22	May '22	Jun '22	Jul '22	Aug '22	Sep '22	Oct '22	Nov '22	Dec '22	
1	Parks Projects																			
2	None																			
3	City Buildings																			
4	Re-Roof, Re-Insulate, and Install New HVAC Bogue Visitor's	115 days	Mon 1/3/22	Fri 6/10/22	Building Permit															
5	Design/Permitting	66 days	Mon 1/3/22	Mon 4/4/22																
6	Bid Award	0 days	Mon 4/25/22	Mon 4/25/22																
7	Construction	35 days	Mon 4/25/22	Fri 6/10/22																
8	City Streets Projects																			
9	Right Turn Lane at Wollochet Drive to SR-16	277 days	Tue 3/1/22	Wed 3/22/23																
10	Consultant Selection	35 days	Tue 3/1/22	Mon 4/18/22																
11	Design/IJR	242 days	Tue 4/19/22	Wed 3/22/23																
12	Harbor History Museum Driveway Revision	64 days	Tue 2/1/22	Fri 4/29/22																
13	Design	44 days	Tue 2/1/22	Fri 4/1/22																
14	Construction	20 days	Mon 4/4/22	Fri 4/29/22																
15	Mid-Block RRFB Crosswalk System (50th St and Soundview Dr)	64 days	Wed 12/1/21	Mon 2/28/22																
16	Design	44 days	Wed 12/1/21	Mon 1/31/22																
17	Construction	20 days	Tue 2/1/22	Mon 2/28/22																
18	Water Projects																			
19	Gig Harbor Sports Complex Water Main	115 days	Mon 1/3/22	Fri 6/10/22																
20	Design	65 days	Mon 1/3/22	Fri 4/1/22																
21	Construction	50 days	Mon 4/4/22	Fri 6/10/22																



Legend	Task		Project Summary		Inactive Milestone		Manual Summary Rollup		Deadline	
	Split		External Tasks		Inactive Summary		Manual Summary		Progress	
	Milestone		External Milestone		Manual Task		Start-only		Manual Progress	
	Summary		Inactive Task		Duration-only		Finish-only			

2021 CIP Project Schedule - Tier 3 Projects

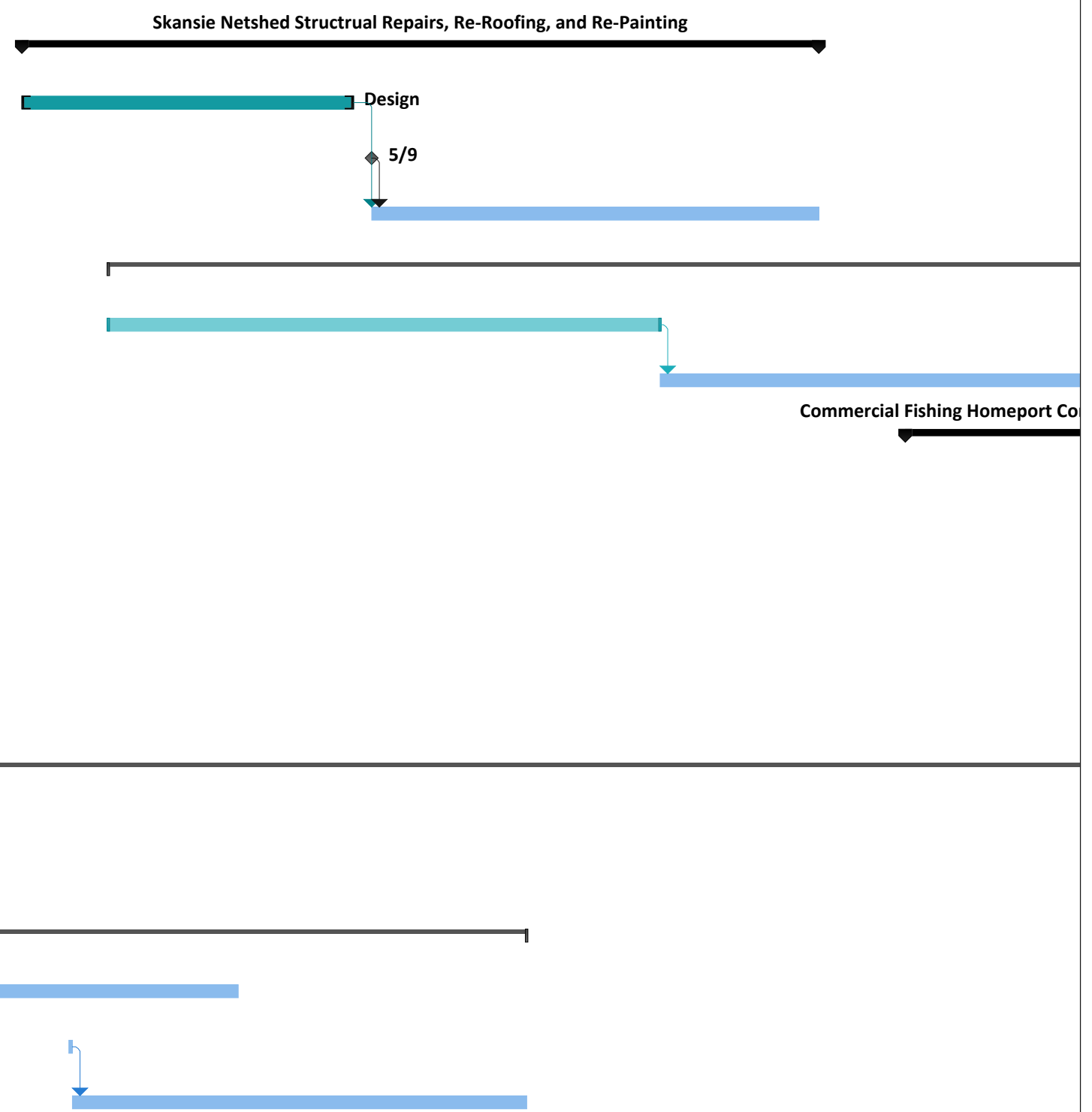
ID	Task Name	Duration	Start	Finish	Permitting	Nov '21	Dec '21	Jan '22	Feb '22	Mar '22	Apr '22	May '22	Jun '22	Jul '22	Aug '22	Sep '22	Oct '22	Nov '22	Dec '22
22	Wastewater Projects																		
23	Lift Station #1 Rehabilitation	181 days	Wed 12/1/21	Wed 8/10/22															
24	Design/Permitting	23 days	Wed 12/1/21	Fri 12/31/21															
25	Construction	51 days	Wed 6/1/22	Wed 8/10/22															
26	Stormwater Projects																		
27	Marine Outfalls Maintenance	217 days	Mon 1/3/22	Tue 11/1/22	Land Use Permit														
28	Design	66 days	Mon 1/3/22	Mon 4/4/22															
29	Construction	151 days	Tue 4/5/22	Tue 11/1/22															
30	Other Department Tasks																		
31	None																		



Legend	Task		Project Summary		Inactive Milestone		Manual Summary Rollup		Deadline	
	Split		External Tasks		Inactive Summary		Manual Summary		Progress	
	Milestone		External Milestone		Manual Task		Start-only		Manual Progress	
	Summary		Inactive Task		Duration-only		Finish-only			

2021 CIP Project Schedule -Tier 4 Projects

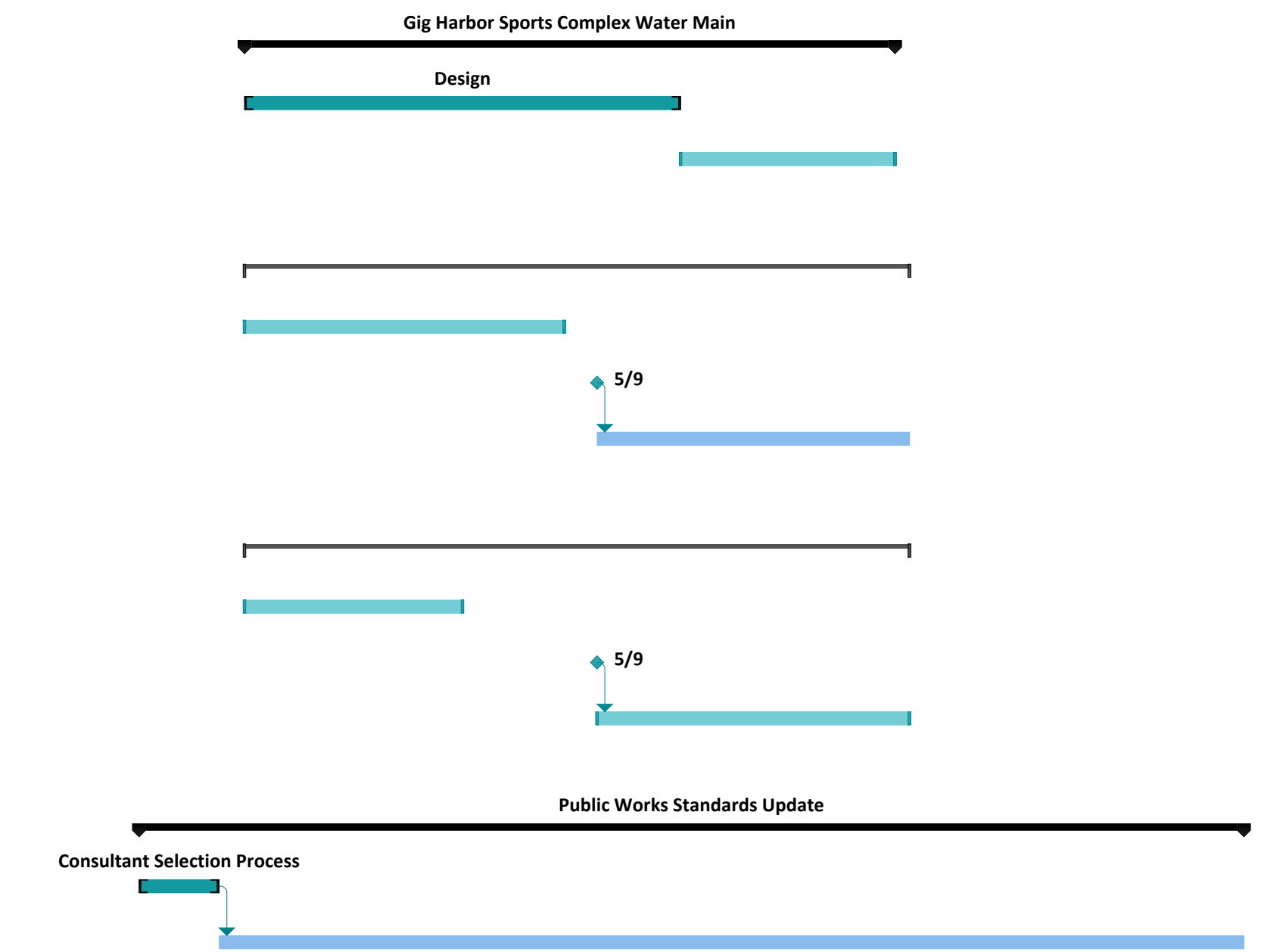
ID	Task Name	Duration	Start	Finish	Permitting	October 11	January 21	May 1	August 11
1	Parks Projects								
2	Skansie Netshed Structural Repairs, Re-Roofing, and	159 days	Tue 2/1/22	Fri 9/9/22	Building Permit				
3	Design	66 days	Tue 2/1/22	Tue 5/3/22					
4	Bid Award	0 days	Mon 5/9/22	Mon 5/9/22					
5	Construction	90 days	Mon 5/9/22	Fri 9/9/22					
6	Masonic Lodge Visioning/Crescent Creek Park	219 days	Fri 2/25/22	Wed 12/28/22					
7	Masonic Lodge Visioning Process	109 days	Fri 2/25/22	Wed 7/27/22					
8	Crescent Creek Park Master Planning	110 days	Thu 7/28/22	Wed 12/28/22					
9	Commercial Fishing Homeport Conceptual Design	392 days?	Tue 10/4/22	Wed 4/3/24	Land Use Permit				
10	Consultant Selection	23 days	Mon 1/2/23	Wed 2/1/23					
11	Design and Permitting	305 days	Thu 2/2/23	Wed 4/3/24					
12	City Buildings								
13	None								
14	Streets Projects								
15	Cushman Trail Connection to Harborview Dr.	391 days	Wed 12/1/21	Wed 5/31/23	Land Use Permit				
16	Consultant Selection	39 days	Mon 1/2/23	Thu 2/23/23					
17	Design and Permitting	220 days	Fri 2/24/23	Thu 12/28/23					
18	Annual Pavement Maintenance and Repair	144 days	Wed 12/1/21	Mon 6/20/22					
19	Design	88 days	Wed 12/1/21	Fri 4/1/22					
20	Bid Award	1 day	Mon 2/14/22	Mon 2/14/22					
21	Construction	90 days	Tue 2/15/22	Mon 6/20/22					



Legend	
Task	Project Summary
Split	External Tasks
Milestone	External Milestone
Summary	Inactive Task
	Inactive Milestone
	Inactive Summary
	Manual Task
	Duration-only
	Manual Summary Rollup
	Manual Summary
	Start-only
	Finish-only
	Deadline
	Progress
	Manual Progress

2021 CIP Project Schedule - Tier 4 Projects

ID	Task Name	Duration	Start	Finish	Permitting	October 11	January 21	May 1	August 11
22	2021 Various Crosswalk and Sidewalk Installations	196 days	Wed 12/1/21	Wed 8/31/22					
23	Project Development and Conceptual Design	44 days	Wed 12/1/21	Mon 1/31/22					
24	Final Design and Permitting	80 days	Thu 5/12/22	Wed 8/31/22					
25	Water Projects								
26	Gig Harbor Sports Complex Water Main	129 days	Tue 2/1/22	Fri 7/29/22					
27	Design	86 days	Tue 2/1/22	Tue 5/31/22					
28	Construction	43 days	Wed 6/1/22	Fri 7/29/22					
29	Wastewater Projects								
30	Stinson Ave Slip Lining Sewer Main	131 days	Tue 2/1/22	Tue 8/2/22					
31	Design	64 days	Tue 2/1/22	Fri 4/29/22					
32	Bid Award	0 days	Mon 5/9/22	Mon 5/9/22					
33	Construction	62 days	Mon 5/9/22	Tue 8/2/22					
34	Stormwater Projects								
35	Storm Pipe Slip Lining at Mnt View Place and Vernhardson	131 days	Tue 2/1/22	Tue 8/2/22					
36	Design	44 days	Tue 2/1/22	Fri 4/1/22					
37	Bid Award	0 days	Mon 5/9/22	Mon 5/9/22					
38	Construction	62 days	Mon 5/9/22	Tue 8/2/22					
39	Other Department Tasks								
40	Public Works Standards Update	218 days	Mon 1/3/22	Wed 11/2/22					
41	Consultant Selection Process	16 days	Mon 1/3/22	Mon 1/24/22					
42	Development and Public Process	202 days	Tue 1/25/22	Wed 11/2/22					



Legend	Task	Project Summary	Inactive Milestone	Manual Summary Rollup	Deadline
Split	External Tasks	Inactive Summary	Manual Summary	Progress	
Milestone	External Milestone	Manual Task	Start-only	Manual Progress	
Summary	Inactive Task	Duration-only	Finish-only		

2021 CIP Project Schedule -Tier 4 Projects

ID	Task Name	Duration	Start	Finish	Permitting	October 11	January 21	May 1	August 11
43	On-Street Parking Code Development and	202 days	Tue 1/25/22	Wed 11/2/22					
						On-Street Parking Code Development and Implementation			
44	Development and Public Process	202 days	Tue 1/25/22	Wed 11/2/22					
						Development and Public Process			

Legend	Task		Project Summary		Inactive Milestone		Manual Summary Rollup		Deadline	
	Split		External Tasks		Inactive Summary		Manual Summary		Progress	
	Milestone		External Milestone		Manual Task		Start-only		Manual Progress	
	Summary		Inactive Task		Duration-only		Finish-only			