



**Agenda for Gig Harbor Planning Commission
Gig Harbor Civic Center
Thursday, June 5, 2025 at 5:30 P.M.**

This meeting may also be accessed through Zoom at <https://zoom.us/j/95353411299> or by calling (253) 215- 8782 and entering Meeting ID 953 5341 1299. Please see the Public Comment & Decorum section at the end of this agenda for information on options to make public comment.

This meeting may also be viewed live in the Council Chambers at the Civic Center.

Call to Order/Roll Call:

Approval of Minutes: April 17, 2025

Public Comment:

Agenda Items:

Climate & Resilience – Staff Presentation and Commission discussion

Other Business: Next meeting Thursday, June 19, 2025

Adjournment:

PUBLIC COMMENT & DECORUM

The city desires to allow a maximum opportunity for public comment. However, the business of the Planning Commission must proceed in an orderly, timely manner. The purpose of a Planning Commission meeting is to advise on subjects prescribed by the City Council; it is not a public forum.

Public comment may be made in-person from the microphone, remotely via Zoom or by phone during designated portions of the meeting. To speak during the meeting via Zoom, press the Raise Hand button near the bottom of your Zoom window or press *9 on your phone. Please refrain from raising your hand until the Chair has announced that the Commission has opened the public comment portion of the meeting. Your

name or the last three digits of your phone number will be called out when it is your turn to speak. When using your phone to call in, you may need to press *6 to unmute yourself. Speakers will be allotted 3 minutes per individual, unless revised by the chair. Comments shall be made, first giving the speaker's name and address. Anyone making "out of order" comments may be subject to removal from the meeting.

Instead of making oral comments, written comments may be submitted to the Planning Commission at MThomas@gigharborwa.gov.

All remarks shall be addressed to the commission as a body and not to any specific commissioner. All speakers shall be courteous in their language and deportment and shall not engage in or discuss or comment on personalities or indulge in derogatory remarks or insinuations with regard to any commissioner, or any member of the staff or the public.

There will be no demonstrations during or at the conclusion of any public comment. These guidelines are intended to promote an orderly system of holding public meetings, to give every person an opportunity to be heard and to ensure that no individuals are embarrassed by voicing their opinions.

AMERICANS WITH DISABILITIES (ADA) ACCOMMODATIONS

ADA accommodations can be provided upon request. Those requiring special accommodations should contact the city clerk at cityclerk@gigharborwa.gov or (253) 853-7613 at least 24 hours prior to the meeting.



**Minutes for Gig Harbor Planning Commission
Thursday, April 17, 2025 at 5:30 P.M.
Council Chambers**

Call to Order/Roll Call

Chair Krawczyk called the meeting to order at 5:30 p.m. Commissioners Burcar, Jordan, Martin, Tessicini and Nasseh were present. Commissioner Snodgrass was not in attendance.

Staff: Community Development Director, Eric Baker and Planning Technician, Michelle Thomas

Approval of Minutes

Motion: Move to approve minutes from February 6, 2025 (Burcar/Martin)

Vote: Unanimously approved

Public Comment on Non-Agenda Items

None

Agenda Items

Election of Chair and Vice Chair

Motion: Commissioner Krawczyk nominated for the position of Chair for the remainder of his term (Jordan/Tessicini)

Vote: Unanimously approved

Motion: Commissioner Burcar nominated for the position of Vice Chair (Martin/Jordan)

Vote: Unanimously approved

Mayor Barber thanked the Commission for the work they have done on the Comprehensive Plan update.

2025 Work Plan – Community Development Director Baker - Staff presentation and discussion on the adoption of the Comprehensive Plan Update and associated code revisions necessary to align with the updated plan.

Other Business

Next meeting Thursday, May 1, 2025

Adjournment 6:51 p.m.

Michelle Thomas

Michelle Thomas
Planning Technician

CLIMATE ELEMENT

Climate Vulnerability Assessment

City of Gig Harbor

Planning Commission| May 15, 2025



Today's Agenda



Time	Agenda Item
10 min	Welcome & agenda review
10 min	<ul style="list-style-type: none">• Climate Vulnerability Assessment Process Overview• Gig Harbor's CVA
38 min	Sector-by-sector key findings and discussion
2 min	Wrap up





Climate Element

Climate Element

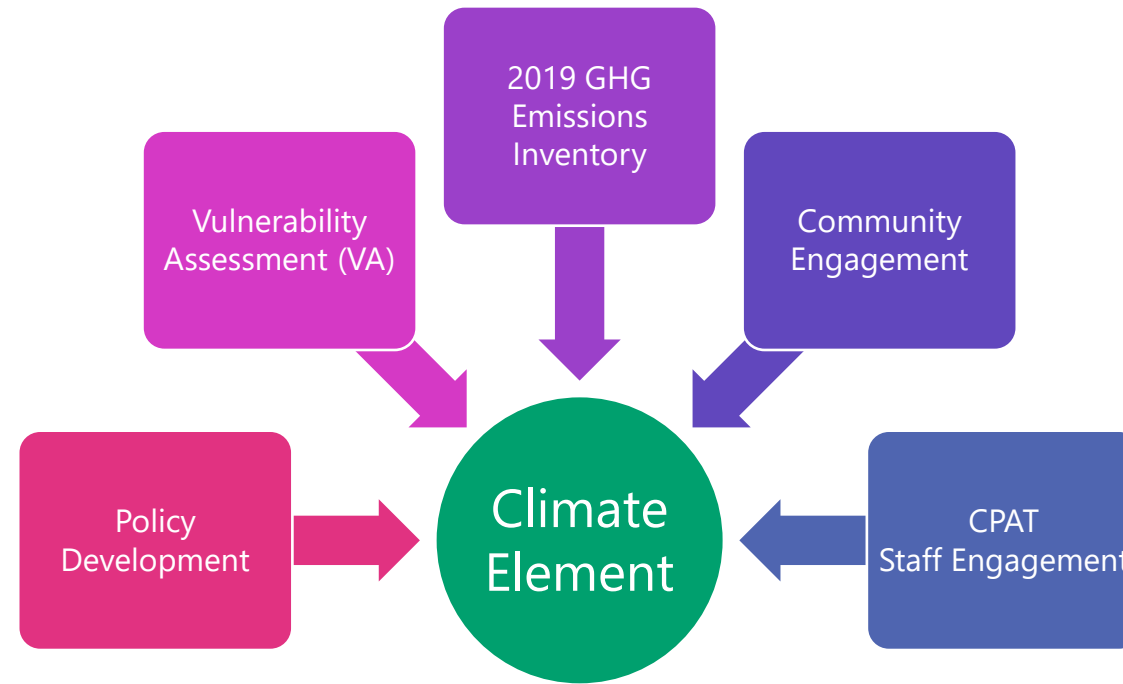
- The GMA was amended in 2023 under Washington House Bill 1181, requiring cities and counties to integrate climate mitigation and resilience policies into comprehensive plan updates.

Climate Element Goals

 <p>Climate Resilience</p> <ul style="list-style-type: none">▶ Address climate hazards like sea level rise, flooding, extreme heat, drought and wildfire and smoke.▶ Protect natural areas and habitats for climate adaptation and migration.▶ Strengthen community preparedness with a focus on environmental justice.	 <p>GHG Emissions Reduction</p> <ul style="list-style-type: none">▶ Reduce transportation and land use emissions without increasing elsewhere.▶ Decrease vehicle miles traveled.▶ Prioritize reductions that benefit disadvantaged communities.
---	---

These required policy changes will **address emissions and climate impacts**, while considering **co-benefits** and integration with other planning documents around **housing, transportation, and land use**.

Key Inputs for the Climate Element



Why Take Action?

We're taking action to support the long-term health, safety, and resilience of Gig Harbor's people, ecosystems, and economies.



Healthy, livable communities



Local, green jobs



Resiliency to environmental changes



Healthy, beautiful natural systems

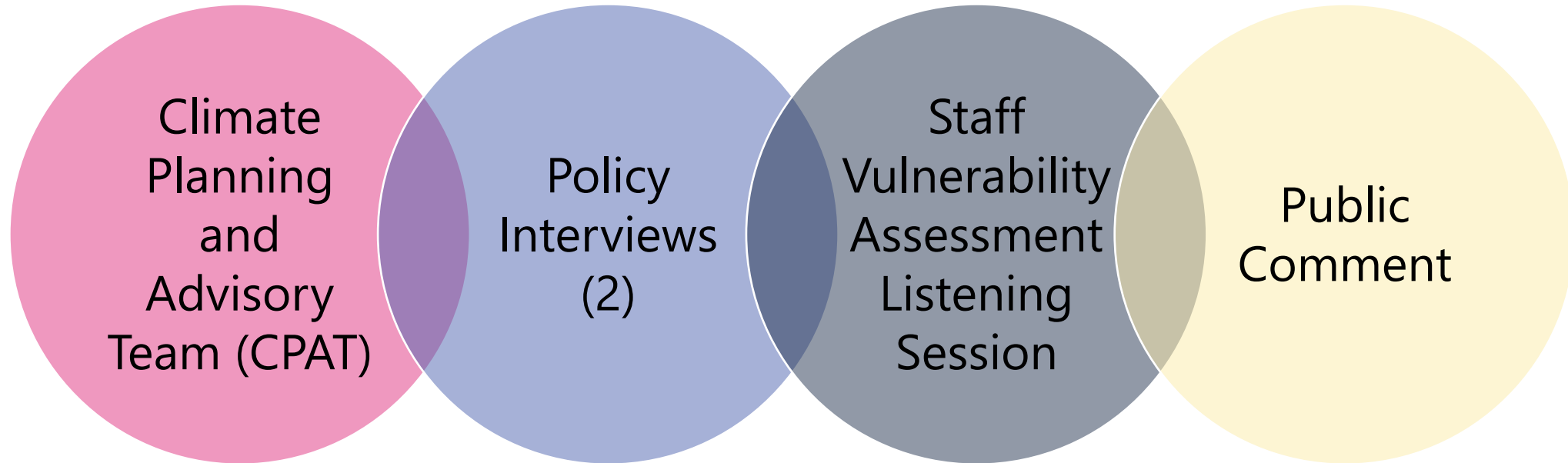


Efficient transportation options



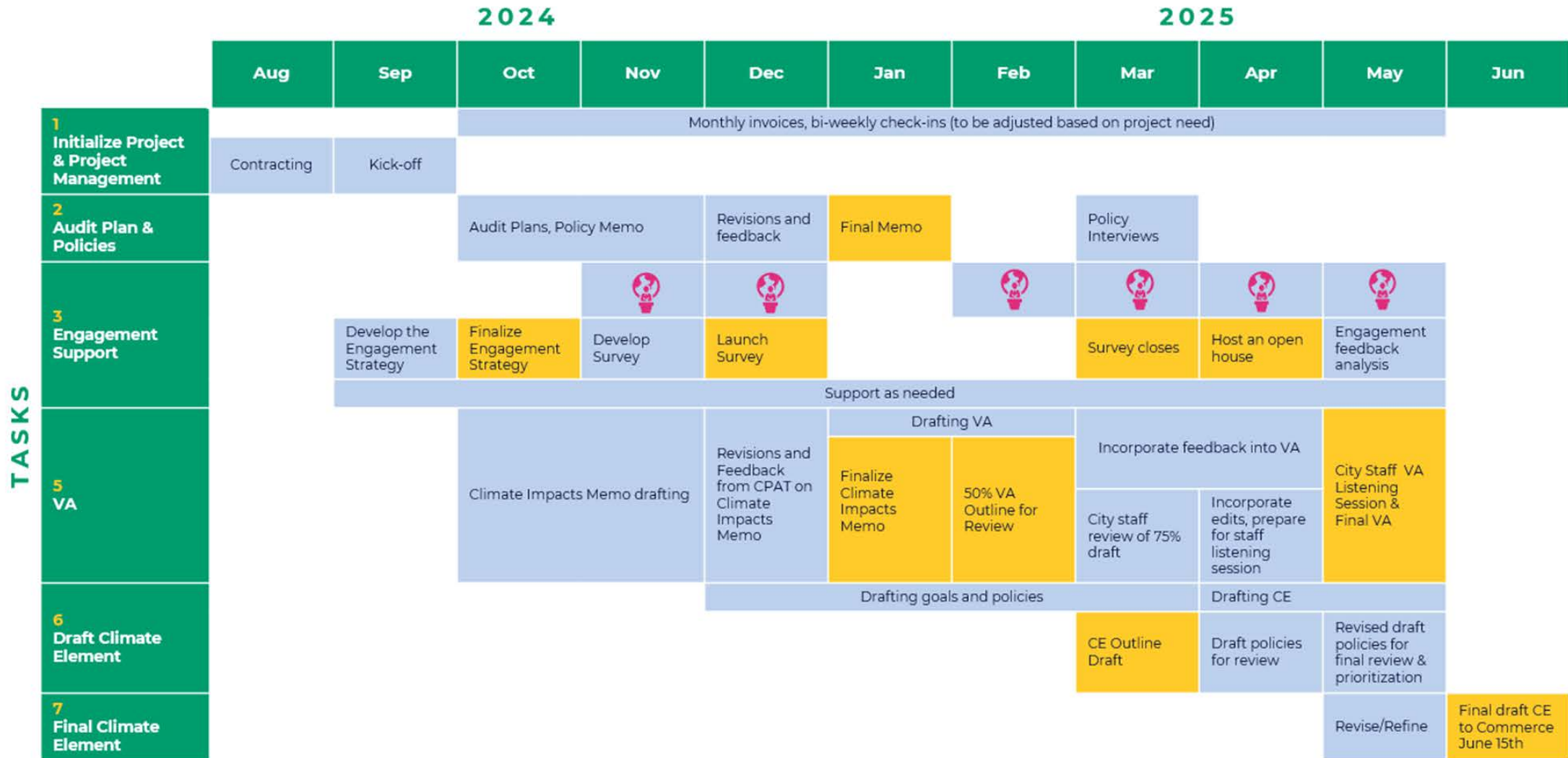
Long-term cost living

Staff and Partner Engagement: Key activities



The **Climate Planning and Advisory Team (CPAT)** is an advisory committee to guide and provide feedback throughout the climate element development process. The CPAT is made up of City Staff, Department Leads, Council Members, community members and the project team.

Climate Element Project Timeline

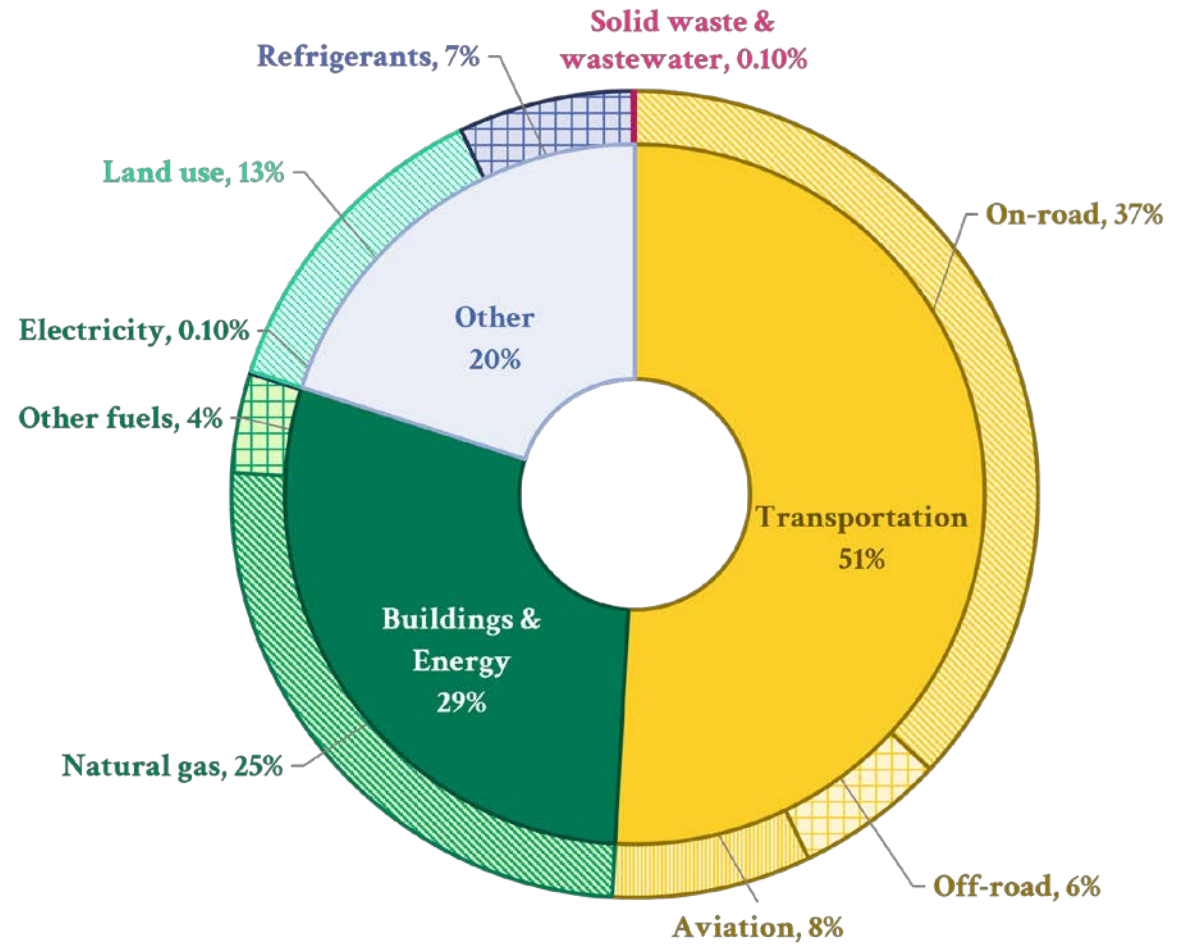


2019 CAP GHG Emissions Inventory

Transportation was the largest source of emissions within the community, responsible for **51% (41,743 MTCO₂e)** of Gig Harbor's emissions profile. Within transportation, on-road sources contributed **73% (30,503 MTCO₂e)**.

Buildings and energy were the second largest source of community-wide emissions, contributing **29% (23,907 MTCO₂e)** to Gig Harbor's emissions profile. Within buildings and energy, natural gas was the largest contributor emitting **88% (20,933 MTCO₂e)** of the sector's emissions.

The remaining emissions occur from **land use (13%, 11,042 MTCO₂e)**, **refrigerants (7%, 5,729 MTCO₂e)**, and **solid waste and wastewater (0.1%, 103 MTCO₂e)**.



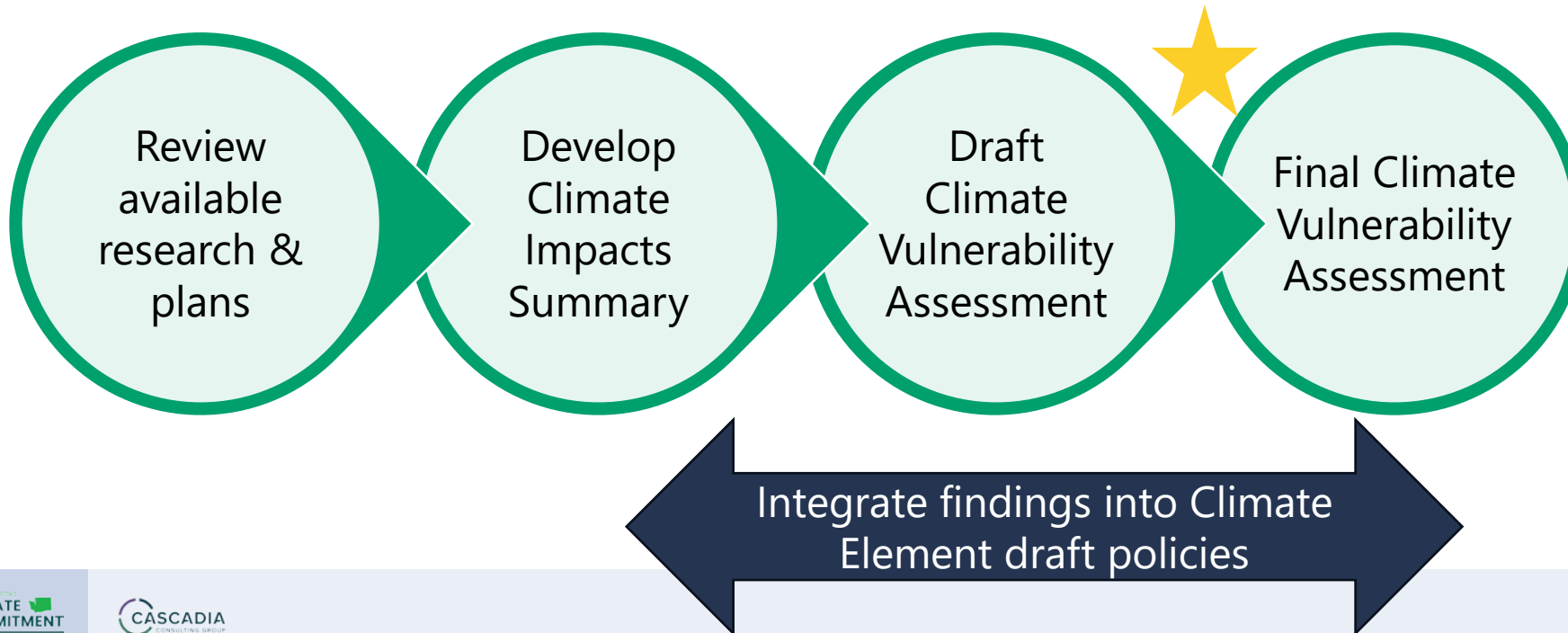
Climate Impacts and Vulnerability Assessment Process

Climate Vulnerability Assessment Overview

The Climate Vulnerability Assessment (CVA) outcomes will inform the Climate Element by:

- Informing us about **specific sectors, communities and locations** that will likely experience climate impacts.
- Using **future projections** to understand impacts, not only historical data.
- Illustrating **holistic and overlapping impacts** of climate changes.

Fall 2024 to Spring 2025



Goals of the Climate Vulnerability Assessment

The goal of the CVA is to identify how **climate change may impact Gig Harbor**, and to determine which populations, infrastructure, or ecosystems are most at risk from those climate impacts.

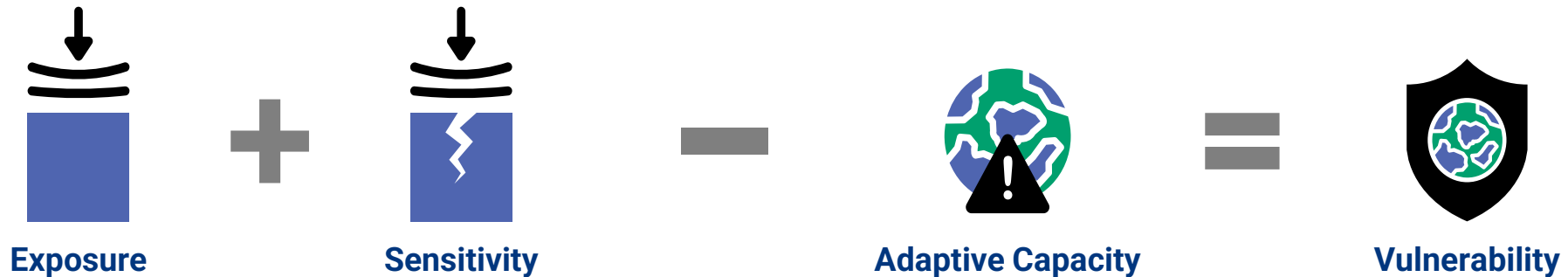
Leverage existing resources to provide a local-level analysis of climate vulnerability

Support the development of climate policies tailored to the unique context of the city

Serves as an educational resource for City departments and facilitates the identification and filling of gaps in existing plans and policies

Defining Climate Vulnerability

Climate risks are the range of potential impacts a system would be affected by climate change and are dependent on exposure and sensitivity. To characterize risks, we will look at:



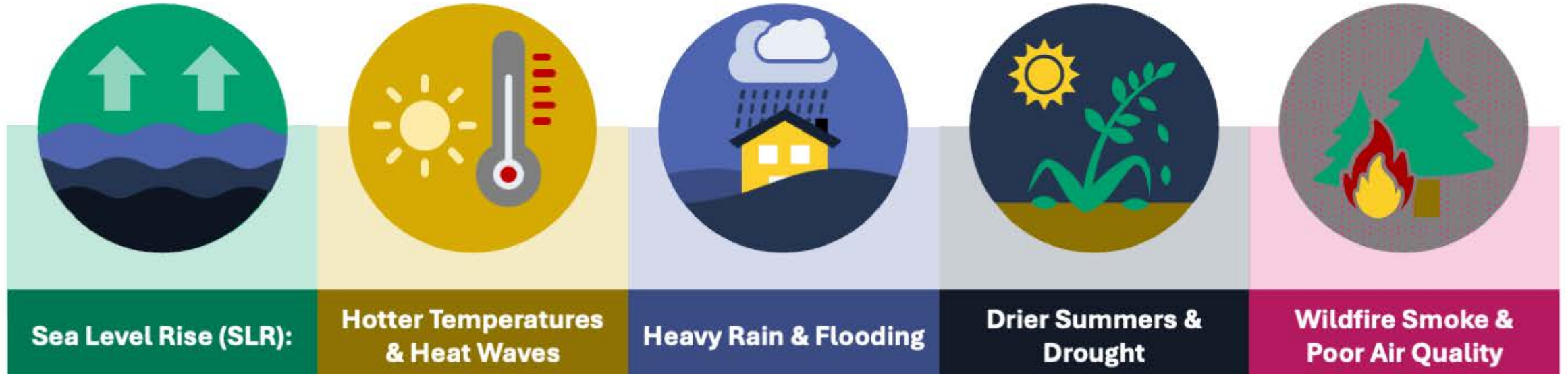
The degree to which a system is stressed by the impacts of climate change

The degree to which that system is likely to be affected by climate impacts

The ability to cope and respond to the impacts of climate change. To characterize adaptive capacity, we will look at current and potential adaptation actions that could minimize the impacts of climate risks.

Exposure and sensitivity **increase** vulnerability, while adaptive capacity **decreases** vulnerability.

Gig Harbor's Expected Climate Impacts



Climate-Sensitive Populations in Gig Harbor

Low-income
Households

Black, Indigenous,
& People Of Color
(BIPOC)

Aging & Elderly
Adults

Children & Youth

People With
Disabilities





People With Pre-
existing
Conditions

Medical Device
Dependent

Seasonal &
Outdoor Workers

Homeless &
Housing Insecure




Gig Harbor's CVA Sectors

Sectors	Subsectors
 Health and Well-being	<ul style="list-style-type: none">• Public Health• Emergency Response
 Economy	<ul style="list-style-type: none">• Local Industries and Businesses• Community and Cultural Resources
 Open Space	<ul style="list-style-type: none">• Parks and Trails• Shoreline
 Infrastructure	<ul style="list-style-type: none">• Water Resources• Transportation




Vulnerability Assessment Scoring

Each sub-sector received a vulnerability ranking based on a scale that assesses climate risk, adaptive capacity, and an overall vulnerability score.

Climate Risk Scoring (Exposure + Sensitivity)

Low	Moderate	High
		
Low exposure to climate impacts.	Moderate exposure and sensitivity to climate impacts.	High exposure and sensitivity to climate impacts.

Adaptive Capacity Scoring

Low	Moderate	High
		
The sector is exposed to the climate hazard but its function is not affected by said exposure. Alternatively, adaptive capacity is high due to adaptation interventions that are in place, being implemented, and are sufficiently effective for sensitivity to be low.	The sector is exposed to and affected by the climate hazard but retains function through adaptive capacity. Plans may address related issues but may not account for climate impacts directly. Some staff capacity and resources are available to address the climate impacts on the sector.	The sector is exposed to the climate hazard and is not able to function as designed when affected by that hazard. Adaptive capacity is low: the sector is plan- and resource-poor.

Sector-by-sector Key findings

Public health & emergency response

Key Risk Findings

Largest populations sensitive to climate impacts are **Aging & Elderly** (27%), **Low-Income** (22%) and **Housing Insecure** (18%), **Children and Youth** (22%), and **People of Color** (18%)

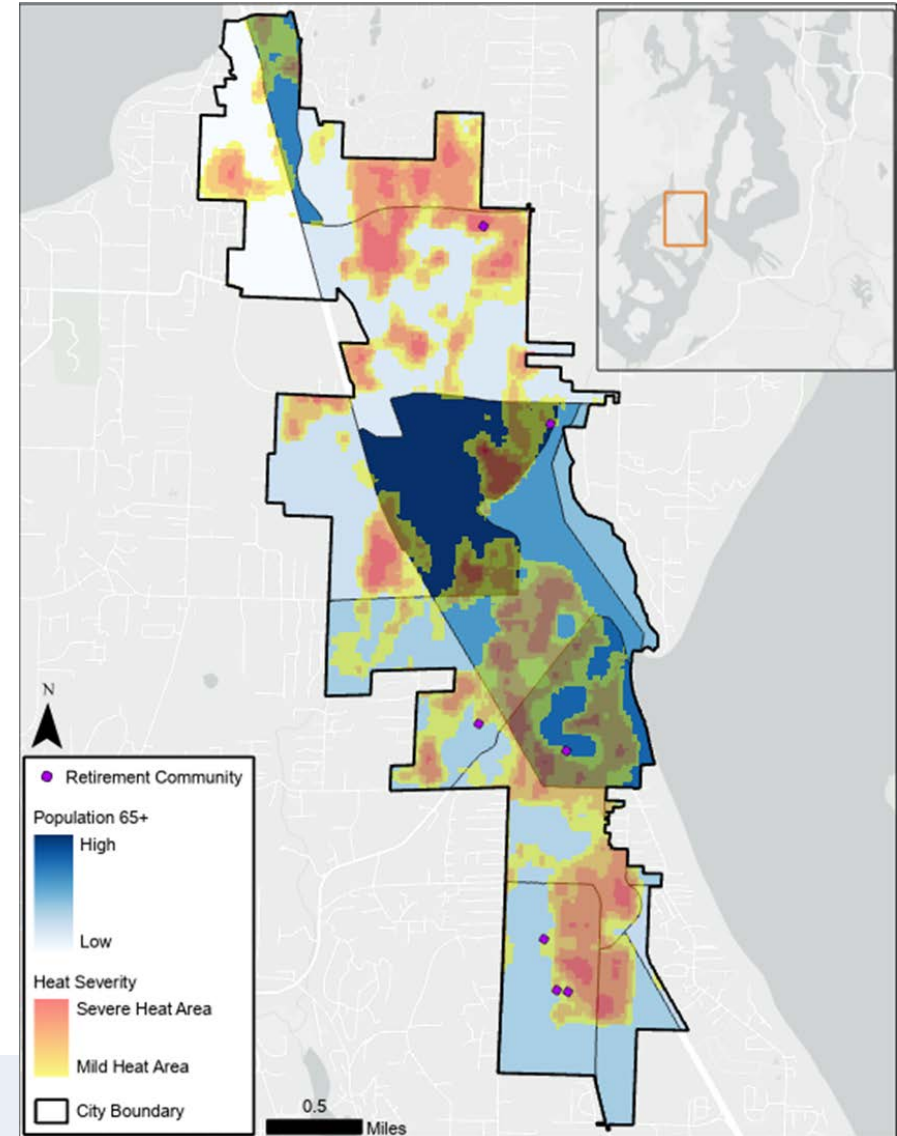
Moderate vulnerability of health care system

- Health care workforce shortage statewide
- Potential spikes in ED visits from climate events

Low vulnerability of emergency response and critical support systems

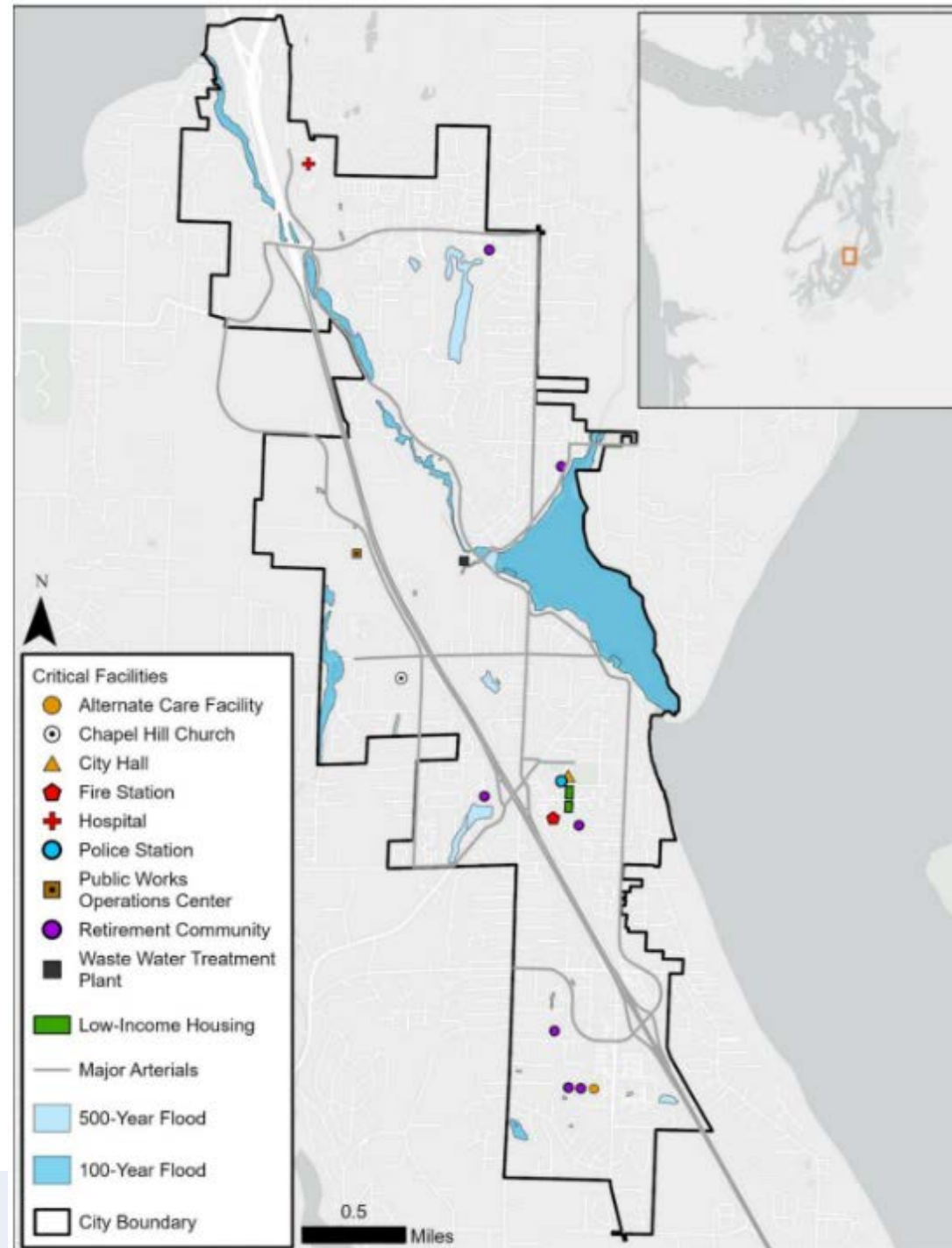
- New fire station facilities, trainings, staffing
- Coordination via PEP-C, around Preparedness Expo, and between city/county/non-profits and churches

Heat Island Overlap with Aging Populations + Retirement Communities



Health & Well-being: Public health & emergency response

Flood risk to critical facilities and affordable housing in the City of Gig Harbor



Local industries & businesses

Key Risk Findings

Moderate-high vulnerability of harbor

- SLR, coastal flooding, and storm surge threaten docks, piers, and harbor access
- Ocean warming and acidification harm marine species important to commercial fishing

Moderate-high vulnerability of all business districts

- Increased wildfire smoke and heat exposure, esp. Uptown and North Gig Harbor due to limited shade and high pavement coverage
- Downtown subject to SLR, flooding, king tides

High vulnerability of local tourism

- Impacted by SLR, king tides, wildfire smoke, and extreme heat
- Key visitor draws are in flood-prone harbor areas (restaurants, trails, parks, Harbor Museum)

Local business and King Tide flooding in Dec. 2022



Community & cultural resources

Key Risk Findings

Moderate vulnerability of Historic Downtown

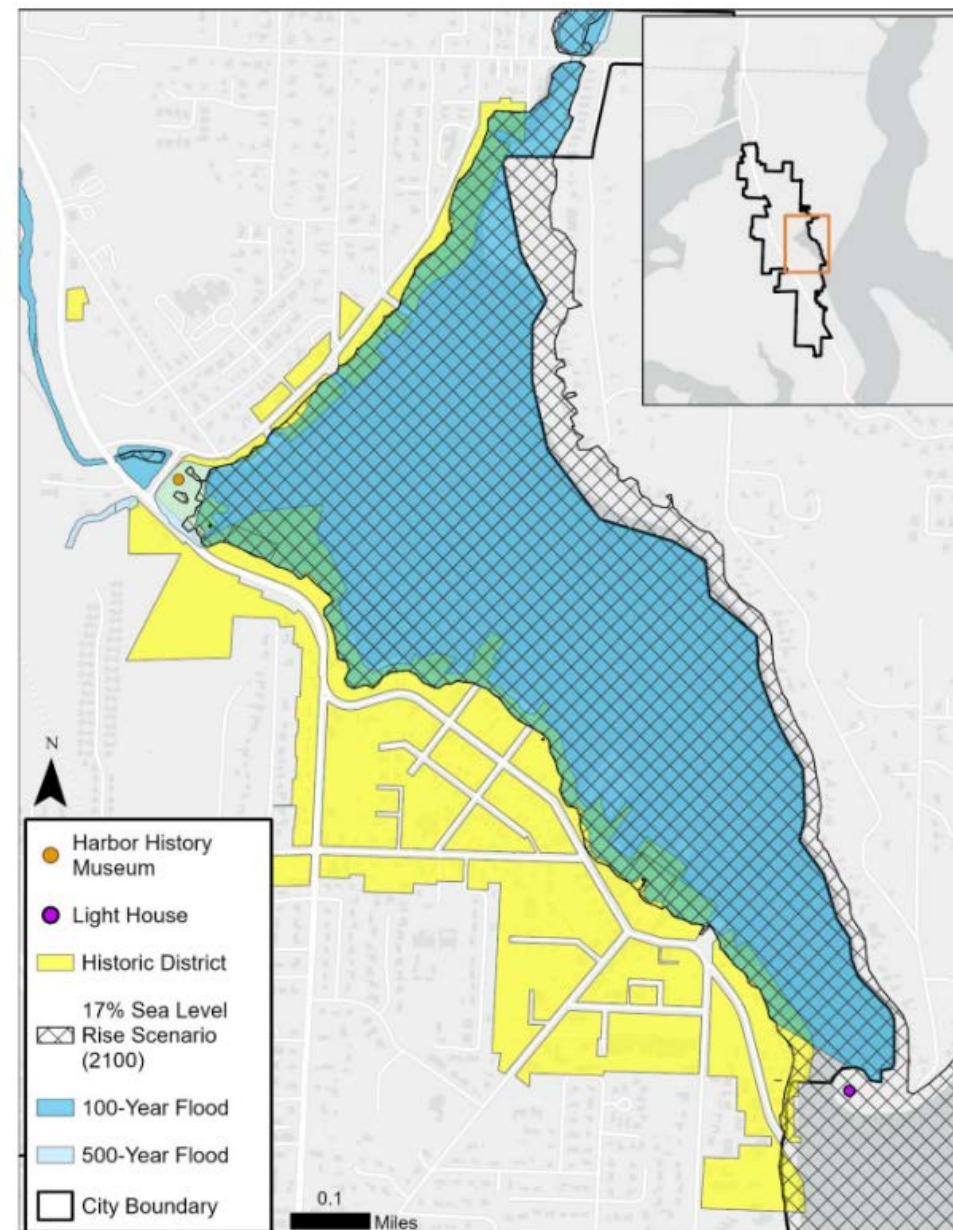
- Central cultural and economic hub along the waterfront facing sea level rise, storm surge, and king tides
- Policies in SMP to encourage resilient design, shoreline protection, and adaptive reuse of historic structures

Moderate-high vulnerability of Harbor History Museum

- Continued damage from SLR, coastal flooding, and storm surge, especially during king tides
- Museum elevating some exhibits

Low-moderate vulnerability of Gig Harbor Lighthouse

- Equipment is elevated above projected king tide levels
- Owned by City but outside City limits



Open Space: Parks & Trails

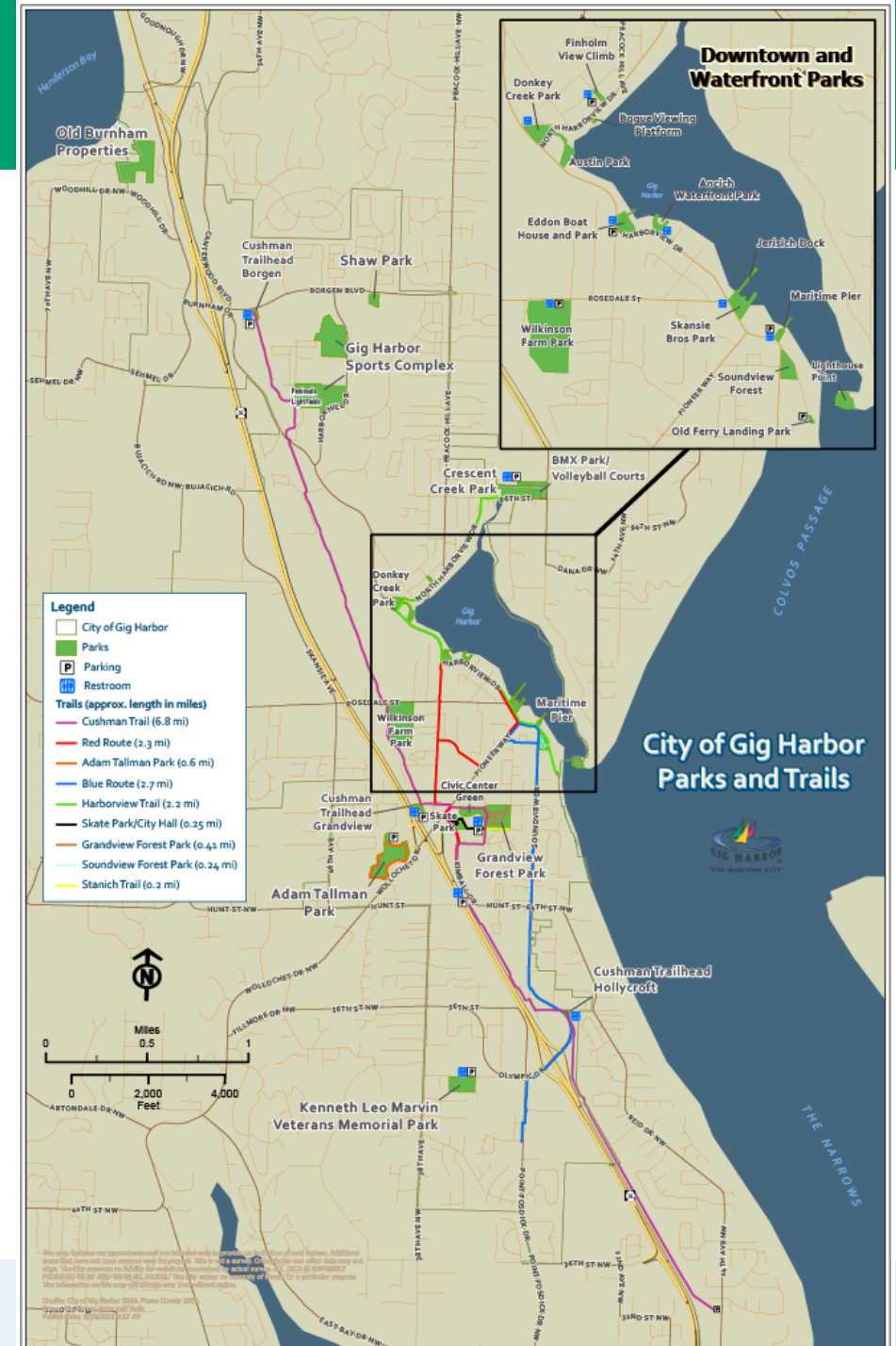
Key Findings

Low to moderate vulnerability of parks and trails

- Climate risks to waterfront parks and trails center around flooding and erosion, from extreme weather and SLR
- **Gig Harbor Sand Spit** (and lighthouse) is most vulnerable and has the least adaptive capacity to erosion and flooding
- All park ecosystems experience impacts from warming temperatures and drought, and have limited capacity to adapt to this hazard

Parks reviewed:

- Donkey Creek Park
- Crescent Creek Park
- Gig Harbor Sand Spit
- Austin Park at tx^waalqøł Estuary
- Harborview Drive Trail
- Cushman Trail



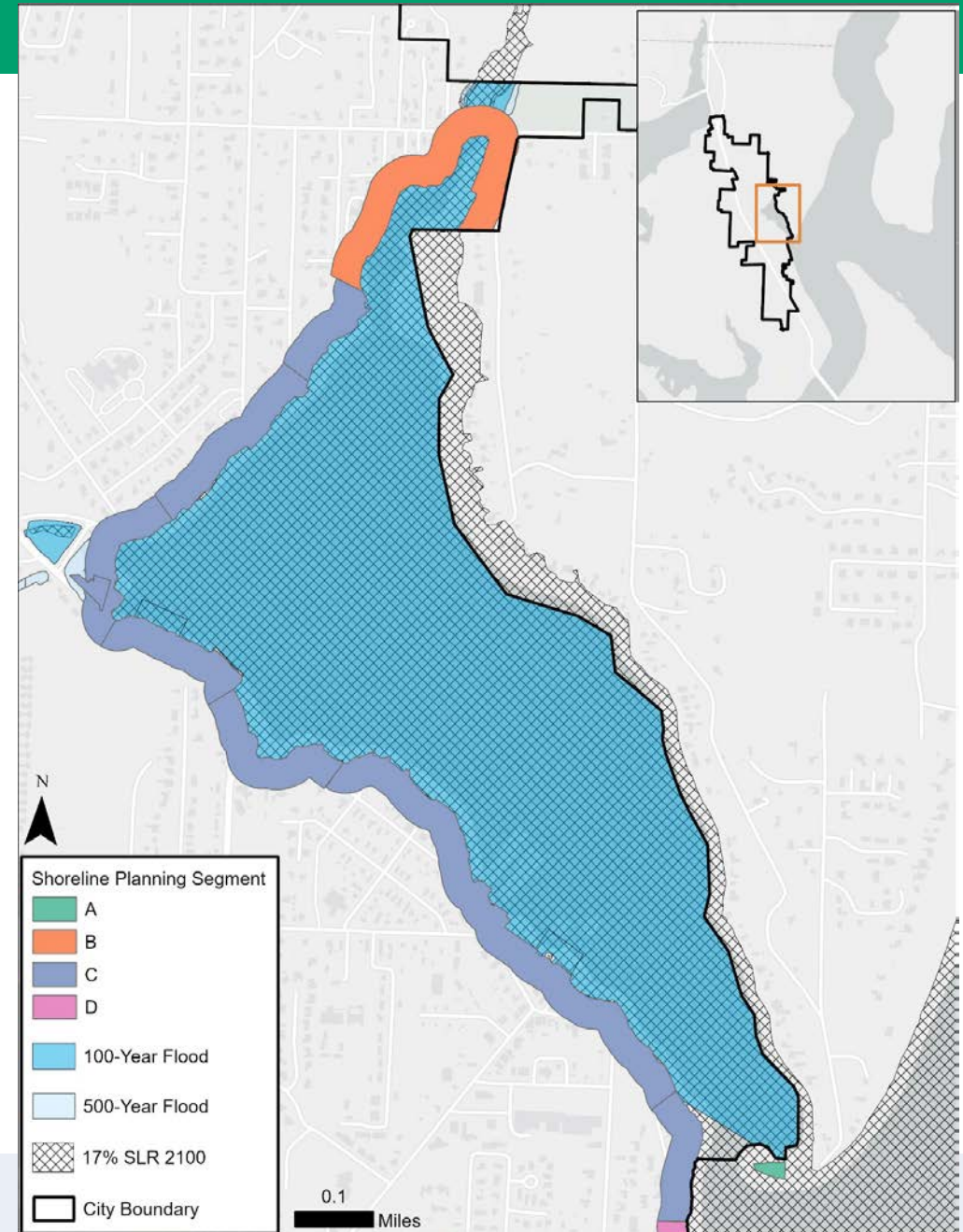
Open Space: Shoreline

Key Risk Findings

Moderate to high vulnerability of shoreline

- Flooding, landslides, and erosion as a result of SLR and extreme weather
- The Eastern UGA along Colvos Passage to the Gig Harbor Spit and the end of Harborview Drive/Old Ferry Landing are the most sensitive to erosion
- Risk of shoreline damage is higher outside the harbor

Flood and sea level rise risk of Gig Harbor shoreline



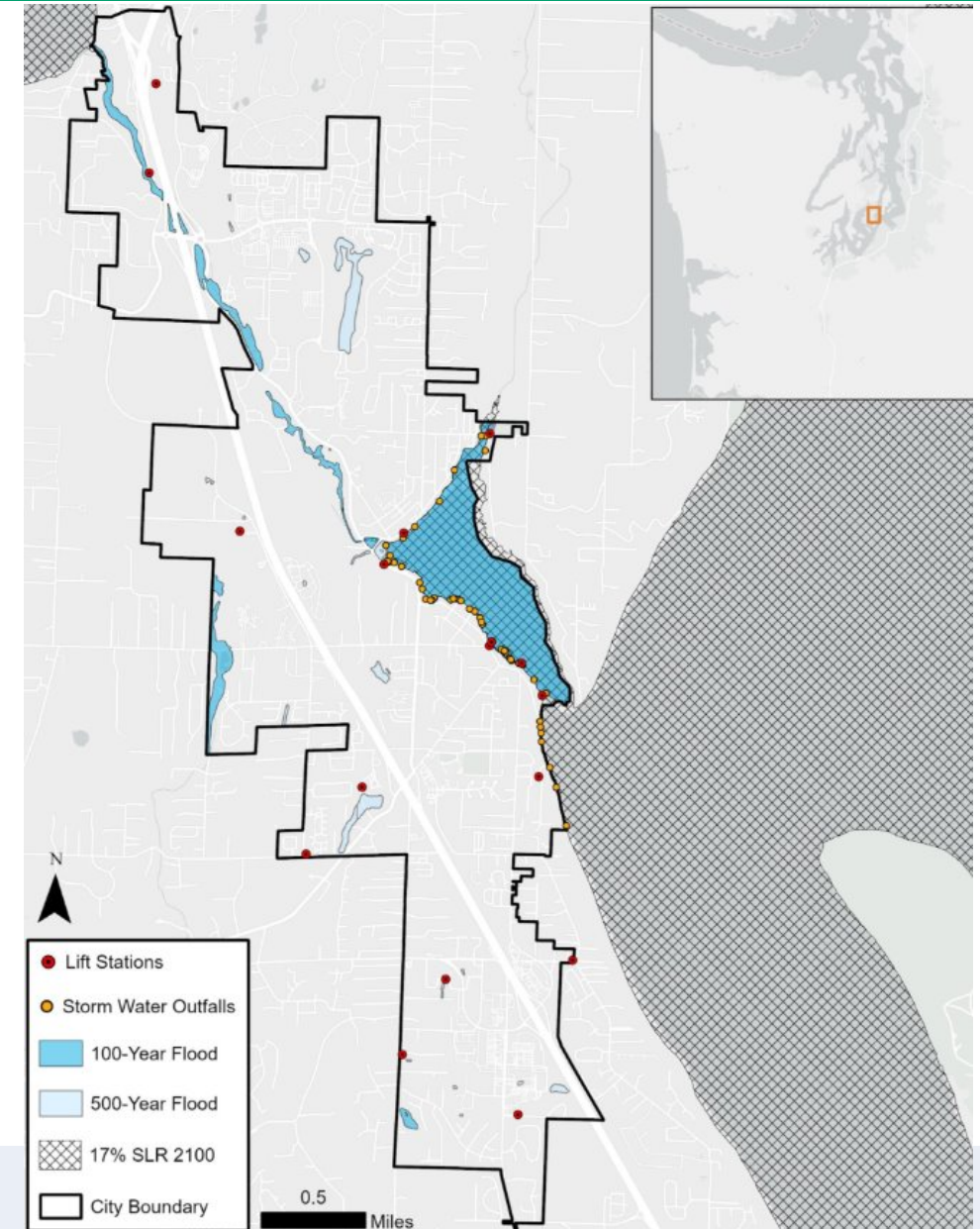
Key Risk Findings

Low vulnerability of water resources

- Catch basins and drainage basins

Low-moderate vulnerability of water infrastructure

- **Stormwater outfall pipes** at risk from extreme weather and SLR, but the City is actively upgrading outfall structures
- **Lift stations** near the coast are vulnerable to flooding from storm surge and sea level rise, but the City has serviced some stations and plans to upgrade others.
- **Some sewer mains** are in floodplains, and can back up and overflow during flooding events, but the City has made targeted upgrades - broader upgrades needed
- **Wells** face moderate risk of contamination and drought-related water quality and supply issues



Infrastructure: Transportation

Key Risk Findings

Moderate vulnerability of active transportation and public transit system and users

- Surface temperatures can get very high, especially in **Gig Harbor North and the Westside** neighborhood.
- Warming temperatures can cause extremely hot surface level temperatures on roads, sidewalks, and at bus stops.

Low-moderate vulnerability of roads + highways

- Extreme precipitation and storm surge can cause flooding and transportation infrastructure, such as roads
- **Finholm neighborhood** has elevated flood risk

